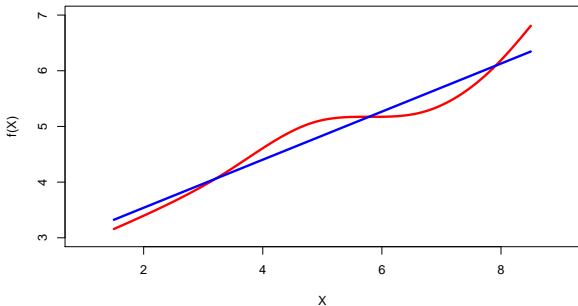


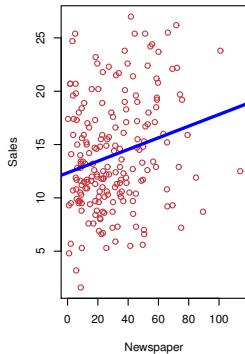
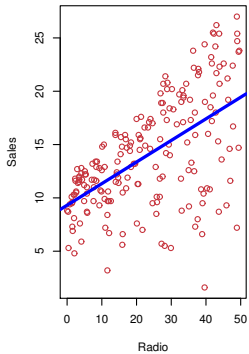
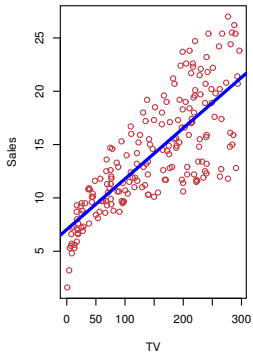
Linear regression

- Linear regression is a simple approach to supervised learning. It assumes that the dependence of Y on X_1, X_2, \dots, X_p is linear.
- True regression functions are never linear!



- although it may seem overly simplistic, linear regression is extremely useful both conceptually and practically.

Advertising data



Simple linear regression using a single predictor X .

- We assume a model

$$Y = \beta_0 + \beta_1 X + \epsilon,$$

where β_0 and β_1 are two unknown constants that represent the *intercept* and *slope*, also known as *coefficients* or *parameters*, and ϵ is the error term.

- Given some estimates $\hat{\beta}_0$ and $\hat{\beta}_1$ for the model coefficients, we predict future sales using

$$\hat{y} = \hat{\beta}_0 + \hat{\beta}_1 x,$$

where \hat{y} indicates a prediction of Y on the basis of $X = x$. The *hat* symbol denotes an estimated value.

Estimation of the parameters by least squares

- Let $\hat{y}_i = \hat{\beta}_0 + \hat{\beta}_1 x_i$ be the prediction for Y based on the i th value of X . Then $e_i = y_i - \hat{y}_i$ represents the i th *residual*
- We define the *residual sum of squares* (RSS) as

$$\text{RSS} = e_1^2 + e_2^2 + \cdots + e_n^2,$$

or equivalently as

$$\text{RSS} = (y_1 - \hat{\beta}_0 - \hat{\beta}_1 x_1)^2 + (y_2 - \hat{\beta}_0 - \hat{\beta}_1 x_2)^2 + \dots + (y_n - \hat{\beta}_0 - \hat{\beta}_1 x_n)^2.$$

- The least squares approach chooses $\hat{\beta}_0$ and $\hat{\beta}_1$ to minimize the RSS. The minimizing values can be shown to be

$$\hat{\beta}_1 = \frac{\sum_{i=1}^n (x_i - \bar{x})(y_i - \bar{y})}{\sum_{i=1}^n (x_i - \bar{x})^2},$$
$$\hat{\beta}_0 = \bar{y} - \hat{\beta}_1 \bar{x},$$

where $\bar{y} \equiv \frac{1}{n} \sum_{i=1}^n y_i$ and $\bar{x} \equiv \frac{1}{n} \sum_{i=1}^n x_i$ are the sample means.

Assessing the Accuracy of the Coefficient Estimates

- The standard error of an estimator reflects how it varies under repeated sampling. We have

$$\text{SE}(\hat{\beta}_1)^2 = \frac{\sigma^2}{\sum_{i=1}^n (x_i - \bar{x})^2}, \quad \text{SE}(\hat{\beta}_0)^2 = \sigma^2 \left[\frac{1}{n} + \frac{\bar{x}^2}{\sum_{i=1}^n (x_i - \bar{x})^2} \right],$$

where $\sigma^2 = \text{Var}(\epsilon)$

- These standard errors can be used to compute *confidence intervals*. A 95% confidence interval is defined as a range of values such that with 95% probability, the range will contain the true unknown value of the parameter. It has the form

$$\hat{\beta}_1 \pm 2 \cdot \text{SE}(\hat{\beta}_1).$$

Hypothesis testing

- Standard errors can also be used to perform *hypothesis tests* on the coefficients. The most common hypothesis test involves testing the *null hypothesis* of

H_0 : There is no relationship between X and Y
versus the *alternative hypothesis*

H_A : There is some relationship between X and Y .

- Mathematically, this corresponds to testing

$$H_0 : \beta_1 = 0$$

versus

$$H_A : \beta_1 \neq 0,$$

since if $\beta_1 = 0$ then the model reduces to $Y = \beta_0 + \epsilon$, and X is not associated with Y .

Hypothesis testing — continued

- To test the null hypothesis, we compute a *t-statistic*, given by

$$t = \frac{\hat{\beta}_1 - 0}{\text{SE}(\hat{\beta}_1)},$$

- This will have a *t*-distribution with $n - 2$ degrees of freedom, assuming $\beta_1 = 0$.
- Using statistical software, it is easy to compute the probability of observing any value equal to $|t|$ or larger. We call this probability the *p-value*.

Results for the advertising data

	Coefficient	Std. Error	t-statistic	p-value
Intercept	7.0325	0.4578	15.36	< 0.0001
TV	0.0475	0.0027	17.67	< 0.0001

Assessing the Overall Accuracy of the Model

- We compute the *Residual Standard Error*

$$\text{RSE} = \sqrt{\frac{1}{n-2} \text{RSS}} = \sqrt{\frac{1}{n-2} \sum_{i=1}^n (y_i - \hat{y}_i)^2},$$

where the *residual sum-of-squares* is $\text{RSS} = \sum_{i=1}^n (y_i - \hat{y}_i)^2$.

- *R-squared* or fraction of variance explained is

$$R^2 = \frac{\text{TSS} - \text{RSS}}{\text{TSS}} = 1 - \frac{\text{RSS}}{\text{TSS}}$$

where $\text{TSS} = \sum_{i=1}^n (y_i - \bar{y})^2$ is the *total sum of squares*.

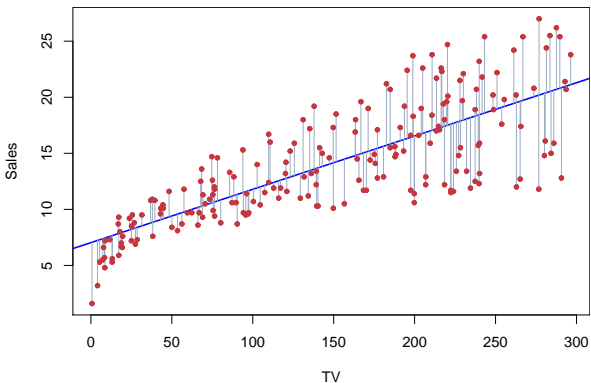
- It can be shown that in this simple linear regression setting that $R^2 = r^2$, where r is the correlation between X and Y :

$$r = \frac{\sum_{i=1}^n (x_i - \bar{x})(y_i - \bar{y})}{\sqrt{\sum_{i=1}^n (x_i - \bar{x})^2} \sqrt{\sum_{i=1}^n (y_i - \bar{y})^2}}.$$

Advertising data results

Quantity	Value
Residual Standard Error	3.26
R^2	0.612
F-statistic	312.1

Example: advertising data



The least squares fit for the regression of **sales** onto **TV**.
In this case a linear fit captures the essence of the relationship, although it is somewhat deficient in the left of the plot.

Multiple Linear Regression

- Here our model is

$$Y = \beta_0 + \beta_1 X_1 + \beta_2 X_2 + \cdots + \beta_p X_p + \epsilon,$$

- We interpret β_j as the *average* effect on Y of a one unit increase in X_j , *holding all other predictors fixed*. In the advertising example, the model becomes

$$\text{sales} = \beta_0 + \beta_1 \times \text{TV} + \beta_2 \times \text{radio} + \beta_3 \times \text{newspaper} + \epsilon.$$

Estimation and Prediction for Multiple Regression

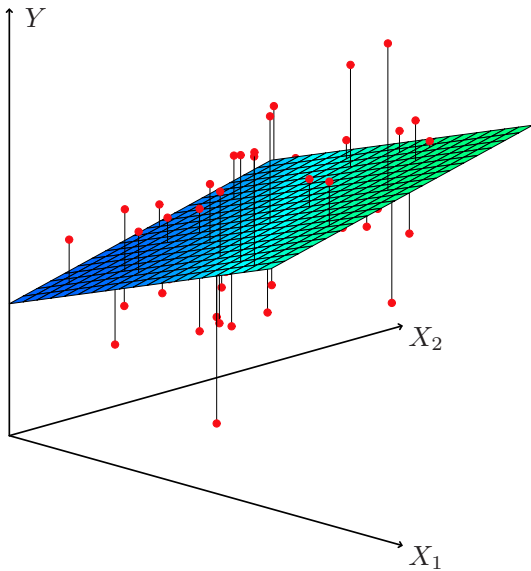
- Given estimates $\hat{\beta}_0, \hat{\beta}_1, \dots, \hat{\beta}_p$, we can make predictions using the formula

$$\hat{y} = \hat{\beta}_0 + \hat{\beta}_1 x_1 + \hat{\beta}_2 x_2 + \dots + \hat{\beta}_p x_p.$$

- We estimate $\beta_0, \beta_1, \dots, \beta_p$ as the values that minimize the sum of squared residuals

$$\begin{aligned} \text{RSS} &= \sum_{i=1}^n (y_i - \hat{y}_i)^2 \\ &= \sum_{i=1}^n (y_i - \hat{\beta}_0 - \hat{\beta}_1 x_{i1} - \hat{\beta}_2 x_{i2} - \dots - \hat{\beta}_p x_{ip})^2. \end{aligned}$$

This is done using standard statistical software. The values $\hat{\beta}_0, \hat{\beta}_1, \dots, \hat{\beta}_p$ that minimize RSS are the multiple least squares regression coefficient estimates.



Results for advertising data

	Coefficient	Std. Error	t-statistic	p-value
Intercept	2.939	0.3119	9.42	< 0.0001
TV	0.046	0.0014	32.81	< 0.0001
radio	0.189	0.0086	21.89	< 0.0001
newspaper	-0.001	0.0059	-0.18	0.8599

Correlations:

	TV	radio	newspaper	sales
TV	1.0000	0.0548	0.0567	0.7822
radio		1.0000	0.3541	0.5762
newspaper			1.0000	0.2283
sales				1.0000

Is at least one predictor useful?

For the first question, we can use the F-statistic

$$F = \frac{(\text{TSS} - \text{RSS})/p}{\text{RSS}/(n - p - 1)} \sim F_{p, n-p-1}$$

Quantity	Value
Residual Standard Error	1.69
R^2	0.897
F-statistic	570

Deciding on the important variables

- The most direct approach is called *all subsets* or *best subsets* regression: we compute the least squares fit for all possible subsets and then choose between them based on some criterion that balances training error with model size.
- However we often can't examine all possible models, since they are 2^p of them; for example when $p = 40$ there are over a billion models!

Instead we need an automated approach that searches through a subset of them. We discuss two commonly use approaches next.

Forward selection

- Begin with the *null model* — a model that contains an intercept but no predictors.
- Fit p simple linear regressions and add to the null model the variable that results in the lowest RSS.
- Add to that model the variable that results in the lowest RSS amongst all two-variable models.
- Continue until some stopping rule is satisfied, for example when all remaining variables have a p-value above some threshold.

Backward selection

- Start with all variables in the model.
- Remove the variable with the largest p-value — that is, the variable that is the least statistically significant.
- The new $(p - 1)$ -variable model is fit, and the variable with the largest p-value is removed.
- Continue until a stopping rule is reached. For instance, we may stop when all remaining variables have a significant p-value defined by some significance threshold.

Qualitative predictors with more than two levels

- With more than two levels, we create additional dummy variables. For example, for the **ethnicity** variable we create two dummy variables. The first could be

$$x_{i1} = \begin{cases} 1 & \text{if } i\text{th person is Asian} \\ 0 & \text{if } i\text{th person is not Asian,} \end{cases}$$

and the second could be

$$x_{i2} = \begin{cases} 1 & \text{if } i\text{th person is Caucasian} \\ 0 & \text{if } i\text{th person is not Caucasian.} \end{cases}$$

Qualitative predictors with more than two levels — continued.

- Then both of these variables can be used in the regression equation, in order to obtain the model

$$y_i = \beta_0 + \beta_1 x_{i1} + \beta_2 x_{i2} + \epsilon_i = \begin{cases} \beta_0 + \beta_1 + \epsilon_i & \text{if } i\text{th person is Asian} \\ \beta_0 + \beta_2 + \epsilon_i & \text{if } i\text{th person is Caucasian} \\ \beta_0 + \epsilon_i & \text{if } i\text{th person is AA.} \end{cases}$$

- There will always be one fewer dummy variable than the number of levels. The level with no dummy variable — African American in this example — is known as the *baseline*.

Extensions of the Linear Model

Removing the additive assumption: *interactions* and *nonlinearity*

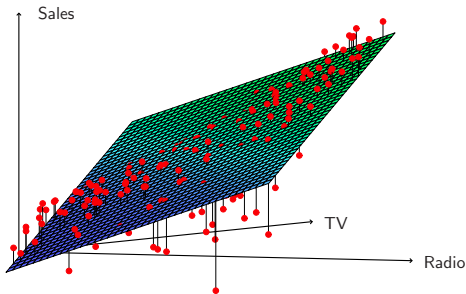
Interactions:

- In our previous analysis of the **Advertising** data, we assumed that the effect on **sales** of increasing one advertising medium is independent of the amount spent on the other media.
- For example, the linear model

$$\widehat{\text{sales}} = \beta_0 + \beta_1 \times \text{TV} + \beta_2 \times \text{radio} + \beta_3 \times \text{newspaper}$$

states that the average effect on **sales** of a one-unit increase in **TV** is always β_1 , regardless of the amount spent on **radio**.

Interaction in the Advertising data?



When levels of either **TV** or **radio** are low, then the true **sales** are lower than predicted by the linear model.

But when advertising is split between the two media, then the model tends to underestimate **sales**.

Modelling interactions — Advertising data

Model takes the form

$$\begin{aligned}\text{sales} &= \beta_0 + \beta_1 \times \text{TV} + \beta_2 \times \text{radio} + \beta_3 \times (\text{radio} \times \text{TV}) + \epsilon \\ &= \beta_0 + (\beta_1 + \beta_3 \times \text{radio}) \times \text{TV} + \beta_2 \times \text{radio} + \epsilon.\end{aligned}$$

Results:

	Coefficient	Std. Error	t-statistic	p-value
Intercept	6.7502	0.248	27.23	< 0.0001
TV	0.0191	0.002	12.70	< 0.0001
radio	0.0289	0.009	3.24	0.0014
TV×radio	0.0011	0.000	20.73	< 0.0001

Hierarchy

- Sometimes it is the case that an interaction term has a very small p-value, but the associated main effects (in this case, **TV** and **radio**) do not.
- The *hierarchy principle*:

If we include an interaction in a model, we should also include the main effects, even if the p-values associated with their coefficients are not significant.