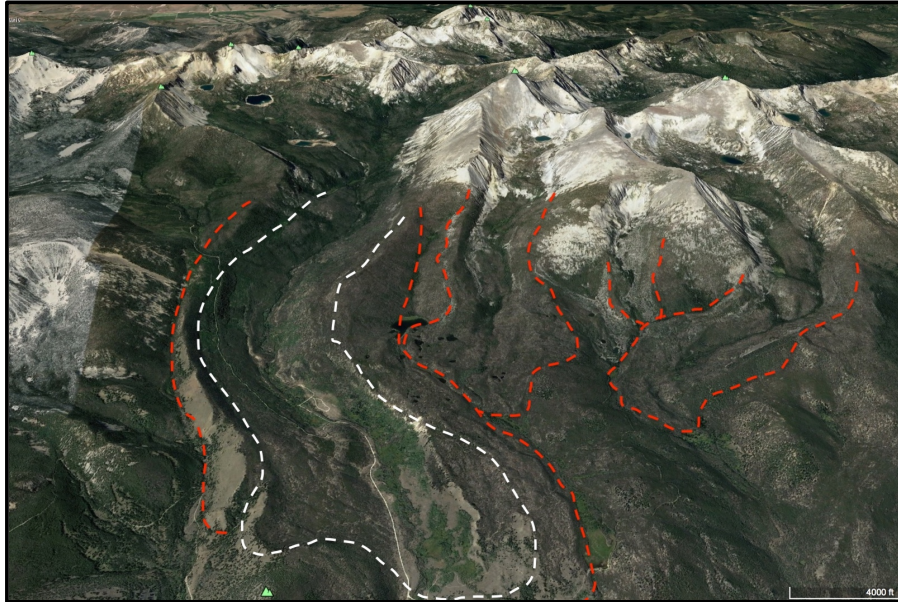


Pioneer Mountains, Montana: an investigation of very dry, alpine glaciation proximal to the LIS

University of Montana Western



We are working in southwest Montana, in the spectacular Pioneer Mountains. This region has no existing age control and was in close proximity to the Laurentide Ice Sheet, which may have caused glacier maxima to occur earlier than the traditional LGM (~21ka). The site could provide important constraints on how the growth of the Laurentide affected regional circulation and precipitation patterns, and new ages may help explain the large (~2-3 ka) discrepancies in timing observed in the Greater Yellowstone Glacier System and Wind River Range.



Visitor: Spruce Schoenemann

Visit dates: July 8-9, 2021

I am an Associate Prof at the University of Montana Western. I am relatively new to the cosmogenic nuclide research community, as my background is in using ice and sediment cores to reconstruct past climates.