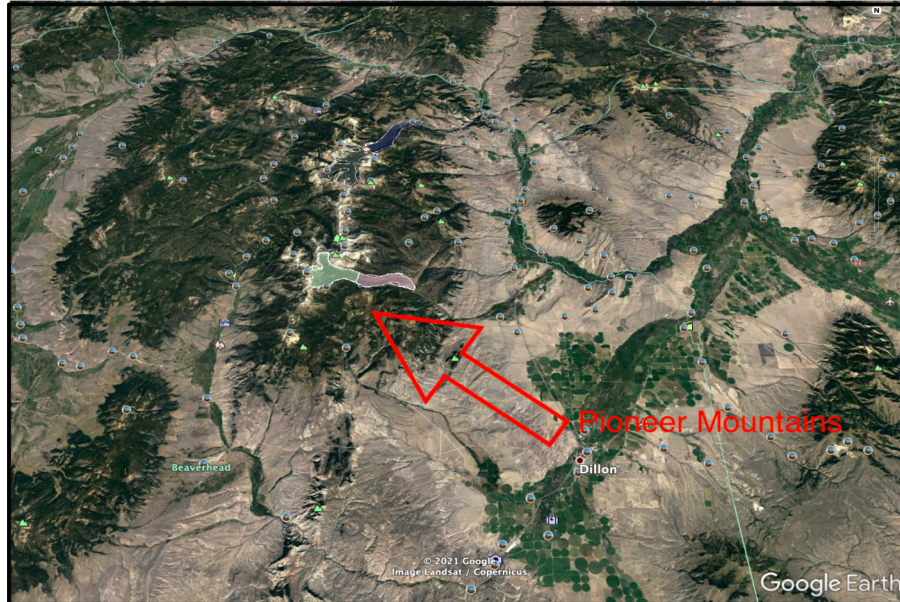


# Pioneer Mountains, Montana: an investigation of very dry, alpine glaciation proximal to LIS

*University of Montana Western*



Our project is based in southwest MT near Dillon in the Pioneer Mountains. We chose to collect samples from this range because there are no TCN dates, and we feel it is important in drawing climatic connections and getting the bigger picture as it relates to the Greater Yellowstone and Wind River Ranges. We hypothesize that the glacial maxima in this range and others in southwest MT might have occurred prior to the LGM.



**Visitor:** Will Larson

**Visit dates:** June 14 - August 6, 2021

I am an undergrad at the University of Montana Western studying Environmental Sciences. Growing up in Montana, I've always had an affinity for exploring the outdoors and generally being immersed in wild places.