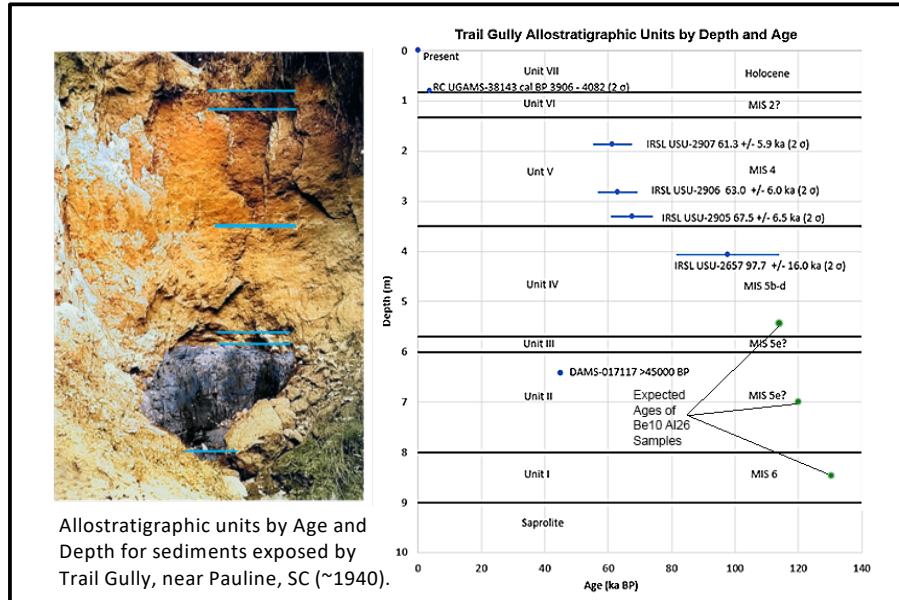
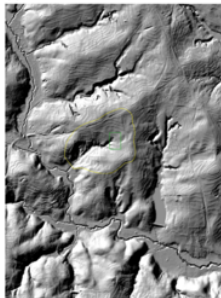


Late Pleistocene Sediment-Filled Valleys in Interfluvial Uplands of the Southern Piedmont

Wofford College



Study area topography is inverted. Remnants of sediment-filled valleys occur in uplands near watershed divides. Seven discrete strata record deposition between erosional time gaps. The lower Units I-III are markedly different from overlying strata, in particular Units I-II contain >100kyr organic deposits. These units may have eroded at depth ~15m deep, while Units IV-VII eroded from surface slopes. Expected sample ages are indicated above.



Historic Trail Gully in 14 ha low-order drainage.



Samples from auger at ladder Base -Trail Gully head (2017).



Visitor: Terry Ferguson

Visit dates: N/A- Unable to visit due to COVID-19 restrictions

Professor Emeritus, Environmental Studies, Wofford College, Spartanburg, SC. Currently studying several Southern Piedmont localities indicating dynamic systems of erosion, transportation, and deposition.