



# DIRECTOR'S NOTES



Among the Fleming Museum's exhibition offerings this spring are two exciting exhibitions that demonstrate the immense diversity of contemporary visual artistic expression.

**Against the Grain** features the unique and engaging work of wood sculptor Hugh Townley. Active from the 1950s until his death in 2008, Townley spent the last decade of his life in Bethel, Vermont. The Fleming is honored to present an exceptional body of Townley's work in his first major museum retrospective. His quirky, evocative, and sensual sculptures will delight visitors of all ages.

**More than Bilingual: William Cordova / Major Jackson** is a collaboration between visual artist and poet, both young and highly acclaimed, who have admired one another's work for years. We are delighted to bring together artist William Cordova and poet and University of Vermont faculty member Major Jackson in a collaborative project that includes mixed-media drawings, installation, video, and poetry. The exhibition title, drawn from one of Cordova's works, beautifully expresses the project's interwoven complex of visual, written, and oral language.

The exhibition in the Fleming's Wilbur Room cases this spring, curated by students in the University of Vermont's Museum Anthropology course, examines power and identity as reflected in objects from various cultures and periods in the Museum's collections. As in previous exhibitions organized by students in this course, this promises to cut a thought-provoking swath through the Fleming's rich and varied collections.

We want to extend our gratitude to all of our members, donors, and visitors who generously support the Fleming's programs. As we enter a new year of economic uncertainties and global challenges, we are continually reminded, by all of you, of the enduring importance of the arts, culture, and community. We thank you, and we look forward to seeing you at the Fleming this spring.

*Janie Cohen*  
Janie Cohen, Director

**STAFF**  
Janie Cohen, *Director*  
Chris Dissinger, *Public Relations and Marketing Manager*  
Aimee Marcereau DeGalan, *Curator of Collections and Exhibitions*  
Christina Fearon, *Curator of Education and Public Programs*  
Stephanie Glock, *Financial Manager*  
Kristen Kilbashian, *Administrative Assistant / Events Coordinator*  
Perry Price, *Exhibition Designer and Preparator*  
Margaret Tamulonis, *Manager of Collections and Exhibitions*

**BOARD OF ADVISORS**  
Philip H. Hoff, Esquire, *Honorary Chair*  
Lorna-Kay Peal, *Chair*  
David Beitzel '80  
Carole Burack  
J. Brooks Buxton '56  
Bill Davison  
Eleazer D. Durfee '86  
Paul Gates '07  
Joan Kalkin  
Kerrie Keller '10  
Jane Kent  
Ursula Owre-Masterson '89  
David Nalin  
Harry D. Nelson Jr. '50  
Sylvia Nelson  
Barbara Randall  
Abu Rizvi  
Anna Rosenblum Palmer  
GA'00  
Karen Schlansky  
David Spector '56

INSIDE COVER IMAGE: William Cordova (American, b. Peru 1971), *Clima de Tiburones*, 2008 (detail). Drawing on found paper with ink, graphite, gold paint, collage, and masking tape. Courtesy of the artist

## OPENING RECEPTIONS

For Fleming Museum Members, the Academic Community & the Public

REGULAR ADMISSION  
Cash Bar and Hors D'Oeuvres

**WEDNESDAY, JANUARY 28**  
5:30 – 7:30 PM

Hugh Townley: *Against the Grain*

More than Bilingual:  
William Cordova / Major Jackson

Objects of Power and Identity

**WEDNESDAY, APRIL 22**  
5:30 – 7:30 PM

A Beckoning  
Country:  
Art and Objects  
from the Lake  
Champlain Valley



The UNIVERSITY of VERMONT'S  
**FLEMING MUSEUM**

www.flemingmuseum.org

61 Colchester Avenue • Burlington, VT 05405  
Offices: (802) 656-0750 • Info: (802) 656-2090  
E-mail: fleming@uvm.edu • Fax: (802) 656-8059

ABOVE: Bank of Burlington Chair, ca. 1822. Painted pine, ash, and basswood. Gift of Mr. and Mrs. Levi Smith Jr. 1980.6.1

The UNIVERSITY of VERMONT'S  
**FLEMING MUSEUM**  
www.flemingmuseum.org

Robert Hull Fleming Museum  
University of Vermont  
61 Colchester Avenue  
Burlington, VT 05405

Information: 802.656.2090  
Offices: 802.656.0750  
Fax: 802.656.8059  
E-mail: fleming@uvm.edu



NONPROFIT ORG  
U.S. POSTAGE  
**PAID**  
BURLINGTON, VT  
PERMIT NO. 143

MAIL TO:



COVER:  
Hugh Townley (American, 1923-2008), *A Brief History of Halley's Comet*, 1984 (detail).  
Mahogany. Courtesy of the Hugh Townley Estate

The UNIVERSITY of VERMONT

# ON VIEW

Exhibitions and Events | Spring 2009

The UNIVERSITY of VERMONT'S  
**FLEMING MUSEUM**

# SPRING CALENDAR 2009

**JANUARY 13** EXHIBITIONS OPEN Hugh Townley: Against the Grain, and Objects of Power and Identity **21** POETRY

SERIES Myronn Hardy and Matthew Miller, 6:00-7:30 PM **27** EXHIBITION OPENS More than Bilingual: William Cordova / Major Jackson

**28** OPENING RECEPTION Hugh Townley: Against the Grain, Objects of Power and Identity, and More than Bilingual: William Cordova /

Major Jackson, 5:30-7:30 PM

**FEBRUARY 4** NOONTIME CAFÉ AND PROGRAM Hugh Townley: Work in Context. Aimee Marcereau DeGalan, 12:15 PM

**18** NOONTIME CAFÉ AND PROGRAM The Materialization of Power -- An Archaeological Perspective. Scott Van Keuren, 12:15 PM

**18** ARTISTS' PANEL DISCUSSION More than Bilingual: William Cordova / Major Jackson, 5:30 PM **24-27** KIDS AND FAMILIES

Spirited Shapes, 10:00 AM - 3:00 PM **25** POETRY SERIES Jim Schley and Greg Delanty, 6:00-7:30 PM

**MARCH 4** NOONTIME CAFÉ AND PROGRAM A Conversation about Hugh Townley. Ed Koren and Eugenia Robbins, 12:15 PM

**22** EXHIBITION CLOSES Hugh Townley: Against the Grain **25** POETRY SERIES Joyce Peseroff and Jeffrey Thomson, 6:00-7:30 PM

**APRIL 1** NOONTIME CAFÉ AND PROGRAM Destroy All Lines: Graffiti from the Street to the Gallery. Perry Price, 12:15 PM **14**

EXHIBITION OPENS A Beckoning Country: Art and Objects from the Lake Champlain Valley **16** SPECIAL EVENT An Evening of Poetry in

Memoriam Aimé Césaire, 8:00-10:00 PM **22** OPENING RECEPTION A Beckoning Country: Art and Objects from the Lake Champlain Valley,

5:30-7:30 PM **24-26** OPEN HOUSE WEEKEND **29** POETRY SERIES Jill McDonough and Katy Lederer, 6:00-7:30 PM

**MAY 6** NOONTIME CAFÉ AND PROGRAM Plants in the Fabric of Life in the Champlain Valley. Kit Anderson, 12:15 PM

BACKGROUND: Hugh Townley (American, 1923-2008), Einstein, Eddington, Edison, and Ford, 1979 (detail). Mahogany. Courtesy of the Hugh Townley Estate

## Museum Hours:

Labor Day - May 3: Tues., Thurs., & Friday, 9 AM - 4 PM / Wed., 9 AM - 8 PM / Sat. & Sun., 1 - 5 PM  
May 5 - August 31: Tuesday - Friday, Noon - 4 PM Saturday & Sunday, 1 - 5 PM

**Museum Galleries Closed Mondays and Major Holiday Weekends:** Martin Luther King Weekend, January 17-19; President's Day Weekend, February 14-16; and UVM Spring Recess, March 7-16

## Admission:

\$5 adults, \$10 family, \$3 students and seniors. Free to Museum members; UVM, Burlington College, Champlain College, Community College of Vermont, and St. Michael's College faculty, staff, and students; and children 6 and under.

## Directions and Parking:

Parking is available in the visitor lot located between the Museum and Fletcher Allen Health Care. Additional parking information and directions are available on our web site, in the Museum brochure, or at 656-2090.



The Fleming Museum is wheelchair accessible and provides reasonable accommodations to persons with disabilities. Please contact us in advance to arrange accommodations.



## NEW EXHIBITIONS

### Hugh Townley: Against the Grain

JANUARY 13 - MARCH 22, 2009



Hugh Townley (American, 1923-2008), Einstein, Eddington, Edison, and Ford, 1979. Mahogany. Courtesy of the Hugh Townley Estate

Hugh Townley: Against the Grain highlights the career of one of the most original wood sculptors of the twentieth century, who spent the last eleven years of his life in Bethel, Vermont. His imaginative, often whimsical forms made from common and exotic varieties of wood communicate through a personal vocabulary drawn from nature, Native American cultures, and Eastern spiritualism. Familiar with the intrinsic characteristics of a wide variety of woods, Townley developed a painterly quality in his relief sculptures by juxtaposing variations in color, grain, and depth of relief, using a hand saw or carving directly into the wood to create a play of light and shadow across the surface. His dedication to traditional techniques and natural materials was in direct opposition to the more industrial welded-metal construction that was popularized in the 1940s and 1950s by his American contemporaries.

Townley (1923-2008) grew up in West Lafayette, Indiana, and attended the University of Wisconsin majoring in fine arts and cultural anthropology. In 1948, he went to Paris to study with the Russian émigré sculptor, Ossip Zadkine (1890-1967), whose large-scale, hand-carved, wooden sculptures of attenuated figural forms were influenced by Cubism. Townley's work embodies the impact of this study and combines it with the biomorphic abstractions associated with Surrealism, as well as the primordial and mythic imagery of Abstract Expressionism. Although Townley draws on these influences, his work is unique in combining geometric and organic forms, ruggedness and elegance, sly wit and serious undertones, as well as elements of figuration and abstraction. The resulting array of juxtaposition, superimposition, and integration of form in his work runs against the grain of any established aesthetic, inviting the viewer to focus on the tension and balance of Townley's singular vision.

### More than Bilingual: William Cordova / Major Jackson

JANUARY 27 - MAY 10, 2008



William Cordova (American, b. 1971), Wholesellers, Retailers & Bullshitters, 2005 (detail). Ink, graphite, & gold leaf on paper. Courtesy of the artist and Artist Pension Trust, New York

Although Peruvian-born visual artist William Cordova and African-American poet Major Jackson come from divergent backgrounds, both artists find inspiration and common ground in music, literature, and the urban aesthetic. Cordova's mixed-media drawings and his installations of discarded stereo speakers and record albums allude to modern urban subcultures as well as to his memories of Peru. Jackson's poetry explores race and language, and ways in which language can both perpetuate clichéd attitudes and foster new

ways of thinking. Individually and collaboratively, their works celebrate and critique how cultural territories are dispersed, redefined, and transformed in urban settings.

The tradition of poet-painter collaborations flourished in New York City in the late 1950s and early 1960s. Although this creative practice diminished in later decades—in part because the artistic movements of Minimalism, Conceptual Art, and Earth Art seemingly offered less scope for poetic collaboration—it is now enjoying a resurgence. The Fleming Museum is pleased to participate in this movement by bringing together for the first time William Cordova and University of Vermont faculty member Major Jackson, longtime admirers of one another's work.

### Objects of Power and Identity

JANUARY 13 - MAY 10, 2009

The French philosopher Michel Foucault suggests that "power is everywhere."

In an exhibition curated by the University of Vermont's Museum Anthropology class, notions of power and identity are considered through a selection of objects from the Fleming Museum, a number of which are exhibited for the first time. Power and identity are revealed here in both common and unexpected ways, through objects that reflect belief systems, express status, and mark geography. Power and identity can be assumed, expressed, imposed, granted, and denied through material culture, from weapons and regalia to jewelry, maps, and religious artifacts. Identity, it seems, can be ambiguous, and power, fleeting.

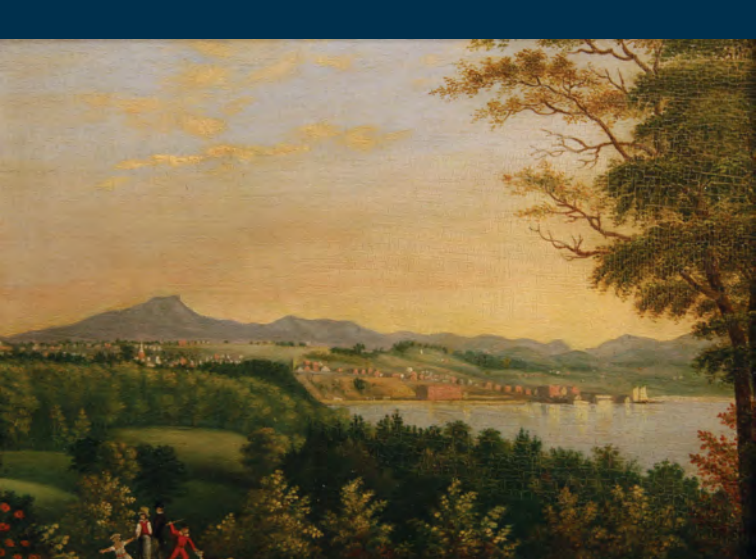


Fan, Spain, 1840. Paper, gouache, and mother-of-pearl. Gift of Electra Havemeyer Webb 1931.9.4

## COMING SOON:

### A Beckoning Country: Art and Objects from the Lake Champlain Valley

APRIL 14 - SEPT. 20, 2009



Theodore Hopkins (American, 1850-1889), Burlington Bay, ca. 1850. Oil on wood. Gift of Walter Cerf 1981.16

In celebration of the quadricentennial anniversary of French explorer and cartographer Samuel de Champlain's travels to the lake that bears his name, the Fleming Museum is organizing A Beckoning Country: Art and Objects from the Lake Champlain Valley. For thousands of years, Lake Champlain has drawn people to its shores and to the land it nourishes. A Beckoning Country examines the features of the Champlain Valley landscape through the objects and art created from and inspired by them.

Organized around a geological and natural history framework—water, earth, flora, and fauna—the exhibition will include both pre- and post-European contact material, such as stone tools, maps, furniture, textiles, and baskets, as well as paintings and drawings that depict and celebrate the region's physical landscape.

## NOONTIME CAFÉ AND PROGRAMS

Programs begin at 12:15 PM on the Wednesdays listed below. Lunch is available for purchase in the Museum's lobby from 11:30 AM to 12:30 PM.

### Hugh Townley: Work in Context

FEBRUARY 4

Aimee Marcereau DeGalan, Curator of Collections and Exhibitions, Fleming Museum

### The Materialization of Power — An Archaeological Perspective

FEBRUARY 18

Scott Van Keuren, Assistant Professor, Department of Anthropology, UVM

### A Conversation about Hugh Townley

MARCH 4

Ed Koren, Artist and Cartoonist; and Eugenia Robbins, Director of the Friends of the Vermont Statehouse; with Aimee Marcereau DeGalan, Curator of Collections and Exhibitions, Fleming Museum

### Destroy All Lines: Graffiti from the Street to the Gallery

APRIL 1

Perry Price, Exhibition Designer and Preparator, Fleming Museum

### Plants in the Fabric of Life in the Champlain Valley

MAY 6

Kit Anderson, Ethnobotanist and Lecturer, Environmental Program, UVM

## POETRY SERIES

The Fleming Museum presents a poetry series hosted by Major Jackson, associate professor, UVM Dept. of English. This reading series highlights established and emergent New England poets whose work represents significant explorations into language, song, and art.

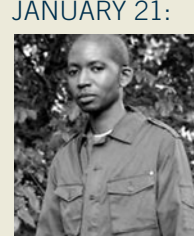
### The Painted Word

WEDNESDAYS, 6:00 - 7:30 PM

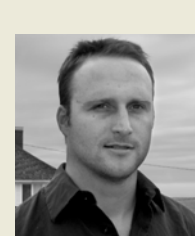
6:00 - 6:30 Music

6:30 - 7:30 Readings

JANUARY 21:



Myronn Hardy

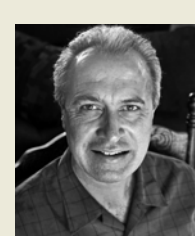


Matthew Miller

FEBRUARY 25:



Jim Schley



Greg Delanty

MARCH 25:



Joyce Peseroff



Jeffrey Thomson

APRIL 29:



Jill McDonough



Katy Lederer

Co-sponsored with the English Department and funded in part by the James and Mary Buckingham Fund.

## SPECIAL PROGRAMS

### Artists' Panel Discussion: More than Bilingual

FEBRUARY 18, 5:30 PM

Peruvian-born visual artist William Cordova and African-American poet Major Jackson are joined by historians of art, literature, and culture to explore avenues of critical dialogue emerging from the work of this creative pairing of artists, in particular, the unraveling and re-assembly of subcultures. The program begins with an introduction by Mary Lou Kete, associate professor, UVM English Department. In addition to the artists, panel participants include José Rockefeller, Art Forum Curator at the David Rockefeller Center for Latin American Studies, Harvard University; and Aimee Marcereau DeGalan, Curator of Collections and Exhibitions, Fleming Museum.

### An Evening of Poetry in Memoriam Aimé Césaire

APRIL 16, 8:00 - 10:00 PM

This event takes place in conjunction with the 35th Annual African Literature Association Conference hosted at UVM, which will focus on ways in which world literature and the visual arts have imagined Africa and blackness.

## FAMILY PROGRAMS

### Spirited Shapes

FEBRUARY 24-27, 10 AM - 3 PM

The bold shapes of Hugh Townley's sculptures have a vitality and mystery that appeal to people of all ages. Drop in and join us for fun art activities as we pursue explorations in shape, space, and expressive form.

## OPEN HOUSE WEEKEND

FRIDAY, SATURDAY, AND SUNDAY

APRIL 24, 25, & 26

Regular hours, complimentary admission