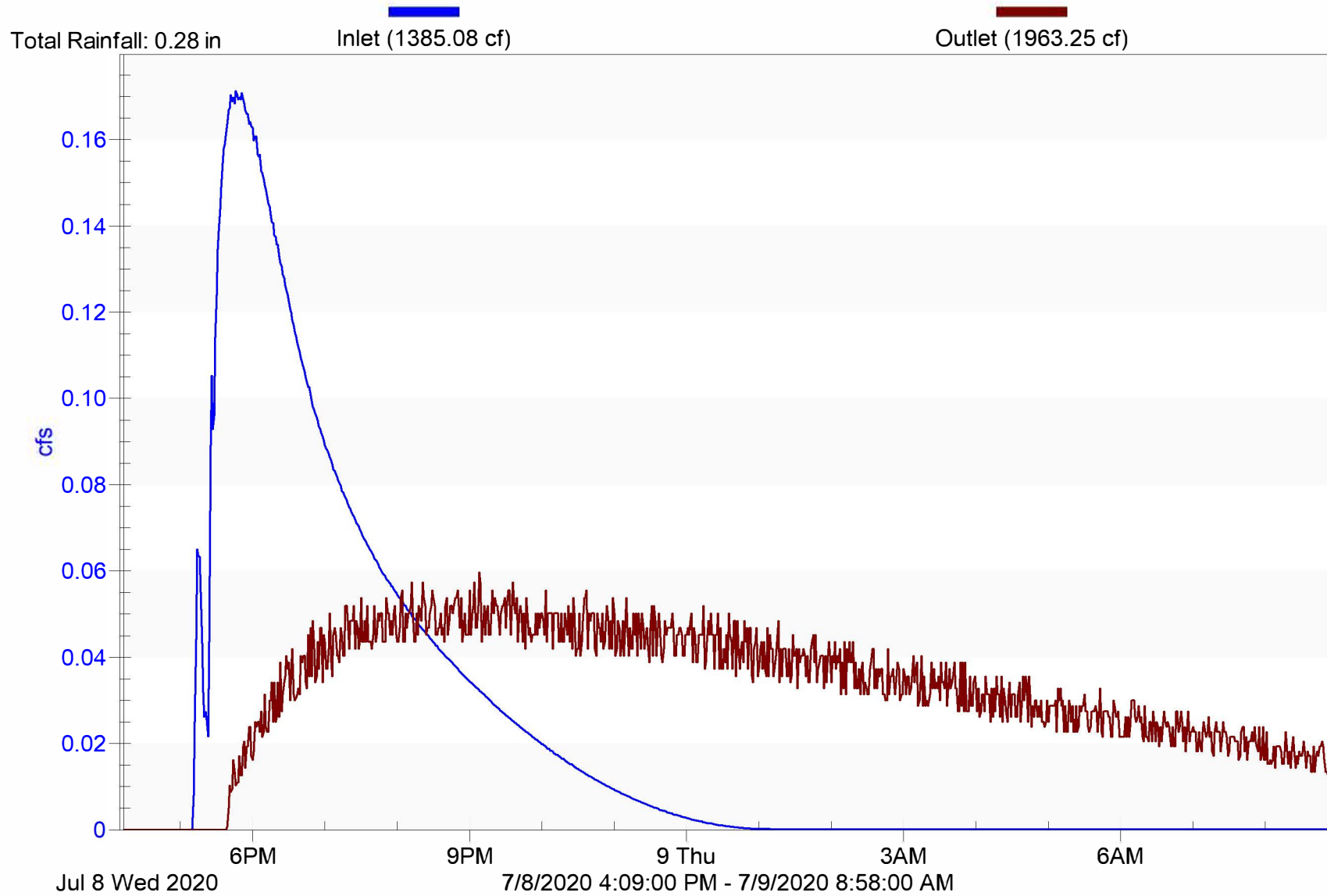


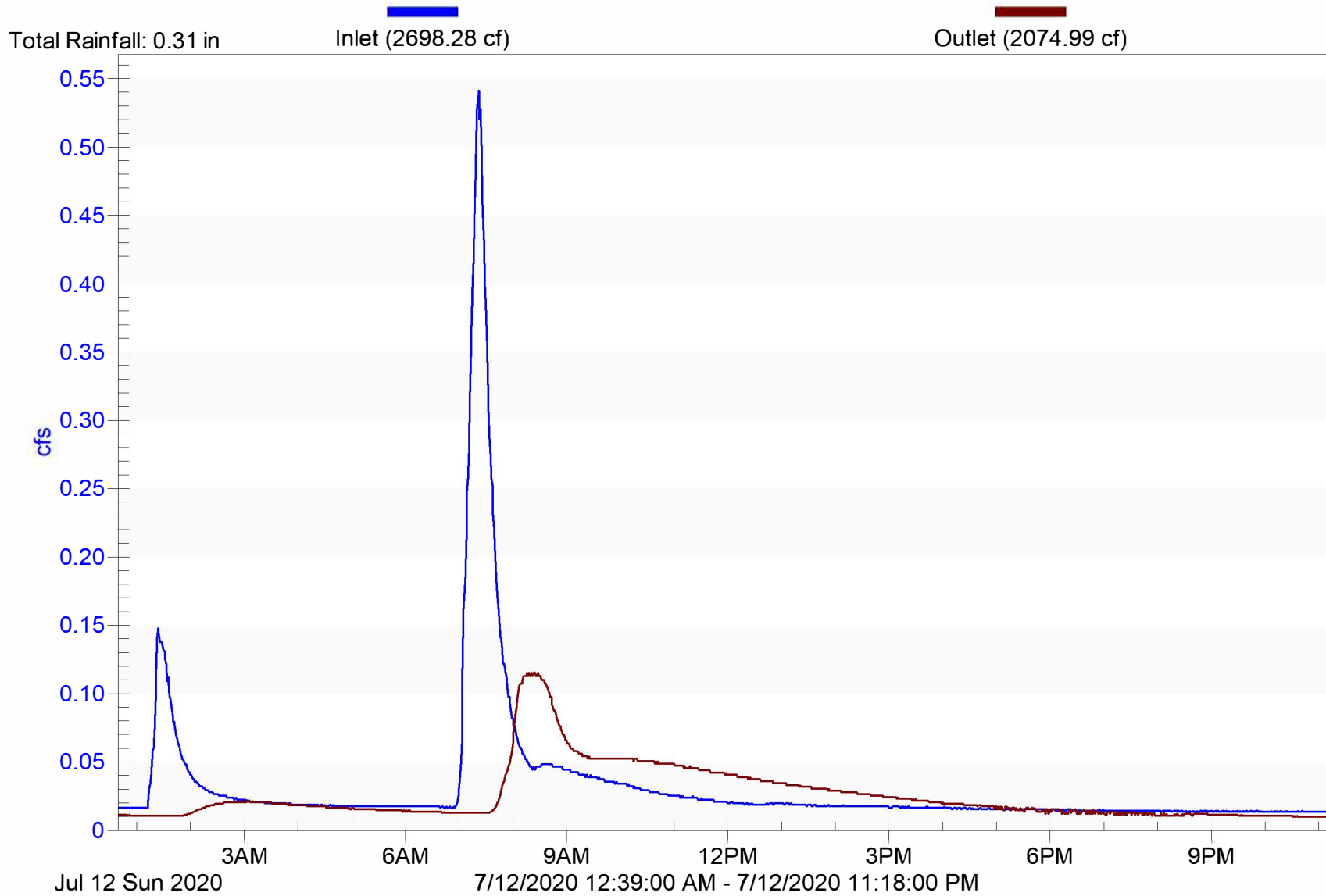
# Storm 2

Kennedy Drive Wetland



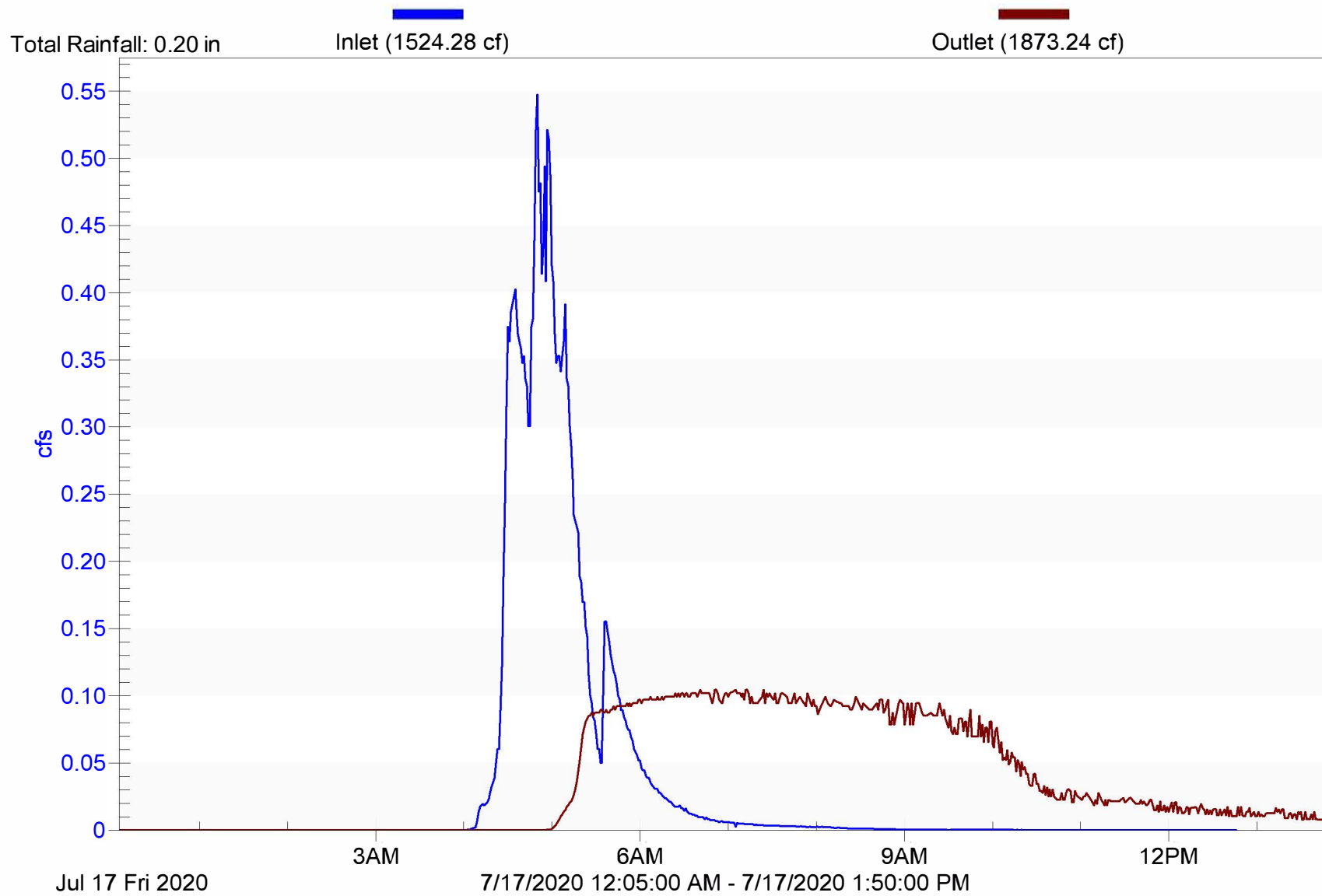
# Storm 3

Kennedy Drive Wetland



# Storm 4

Kennedy Drive Wetland



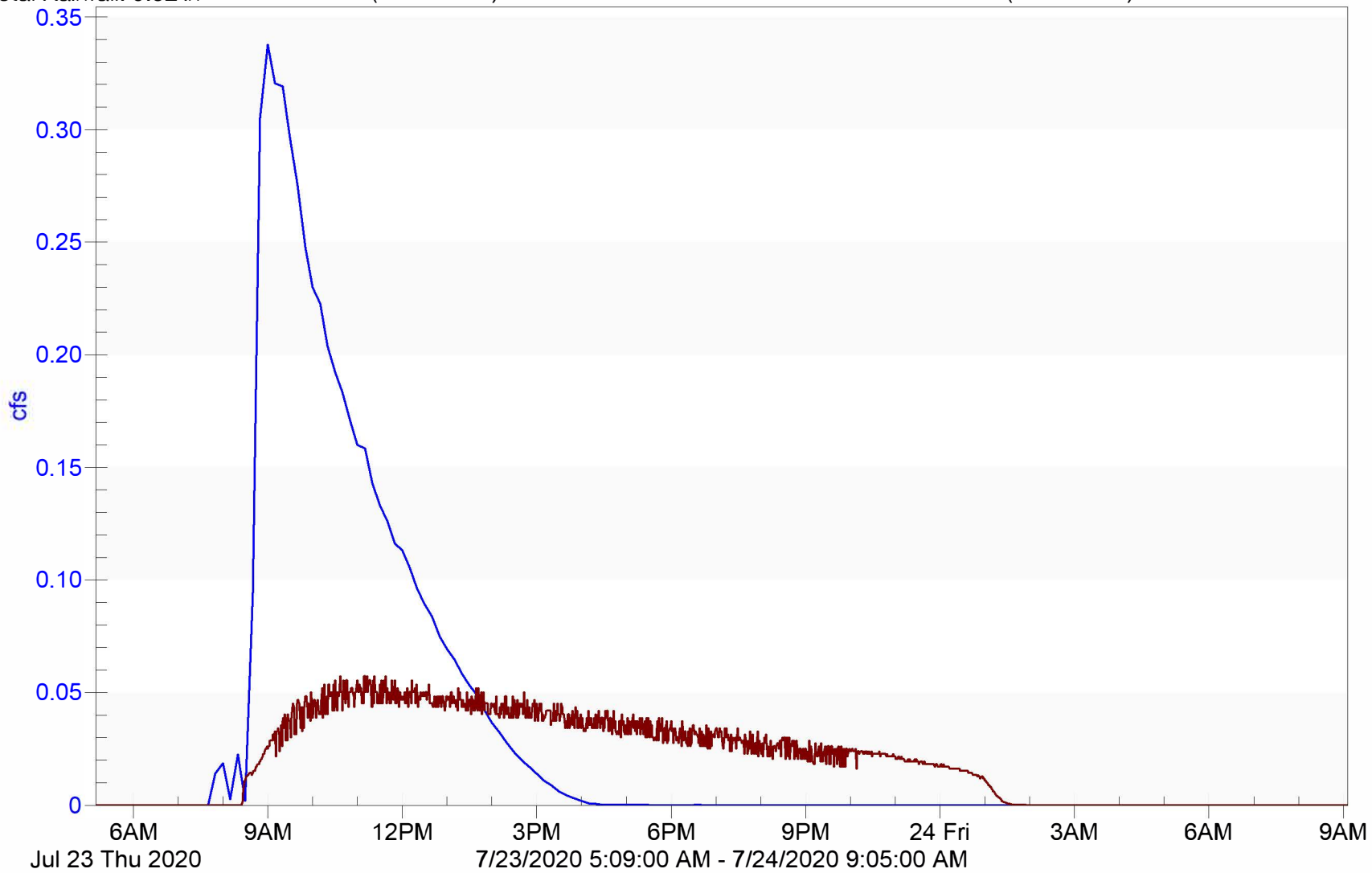
# Storm 5

Kennedy Drive Wetland

Total Rainfall: 0.32 in

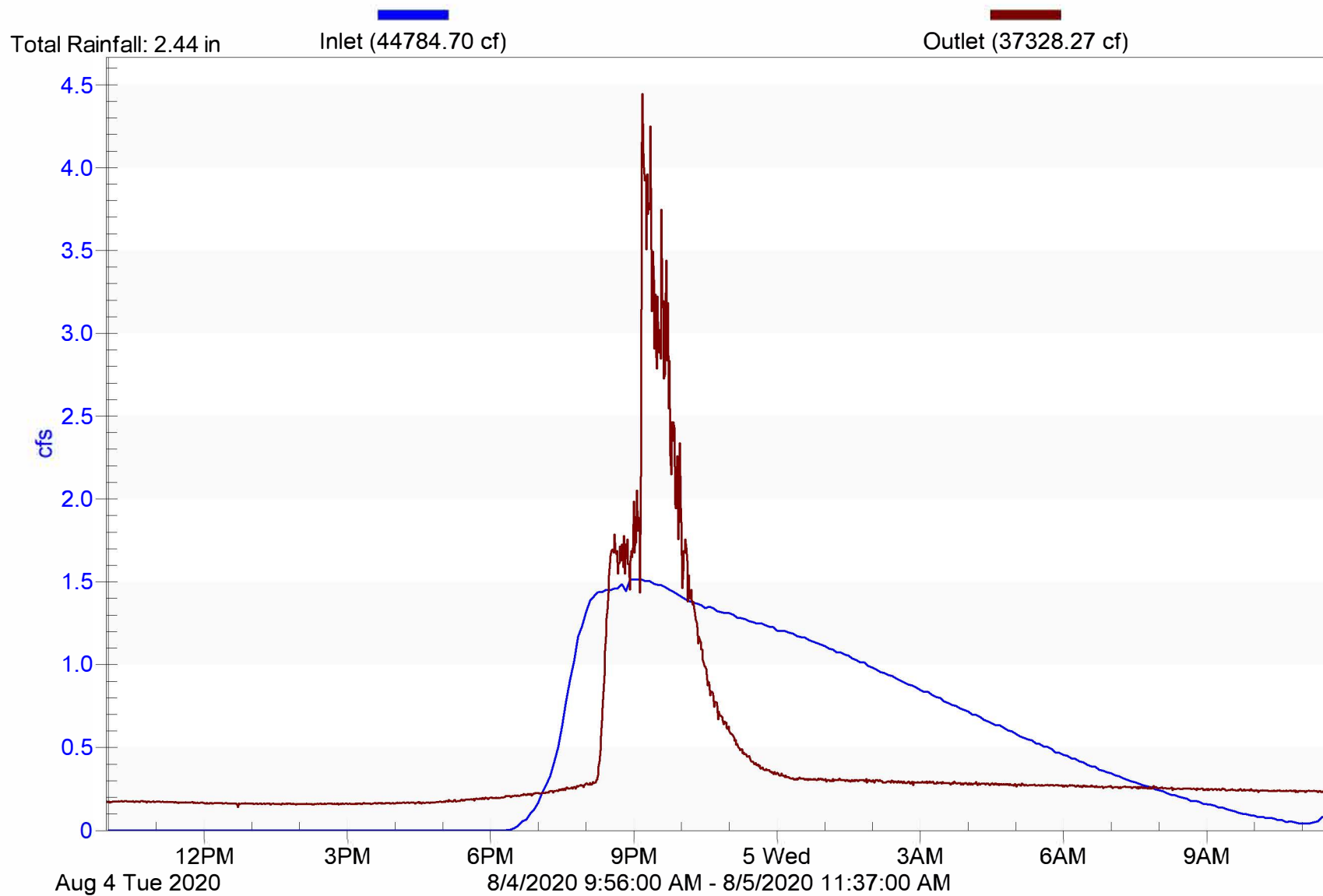
Inlet (3242.38 cf)

Outlet (2003.16 cf)



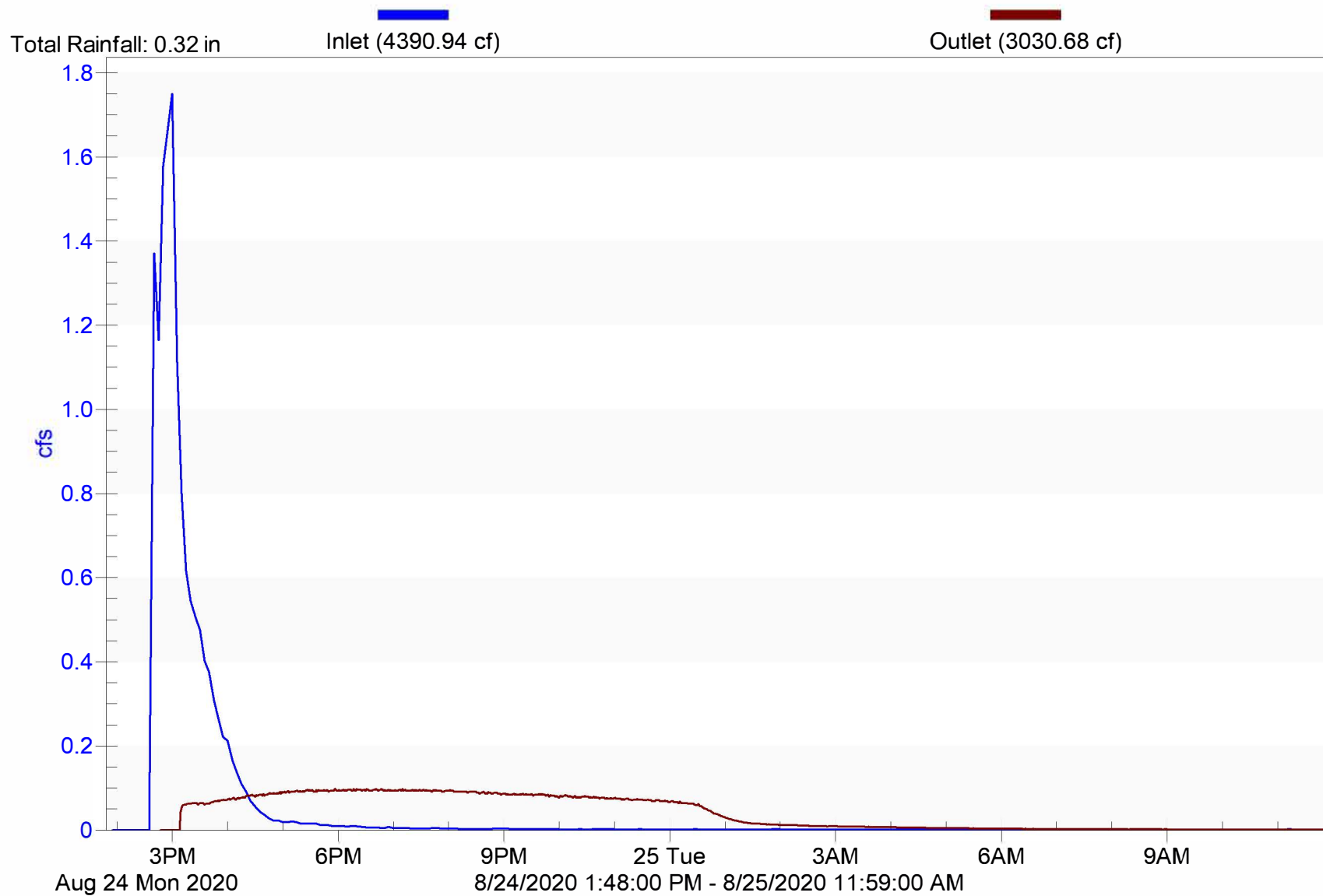
# Storm 6

Kennedy Drive Wetland



# Storm 8

Kennedy Drive Wetland



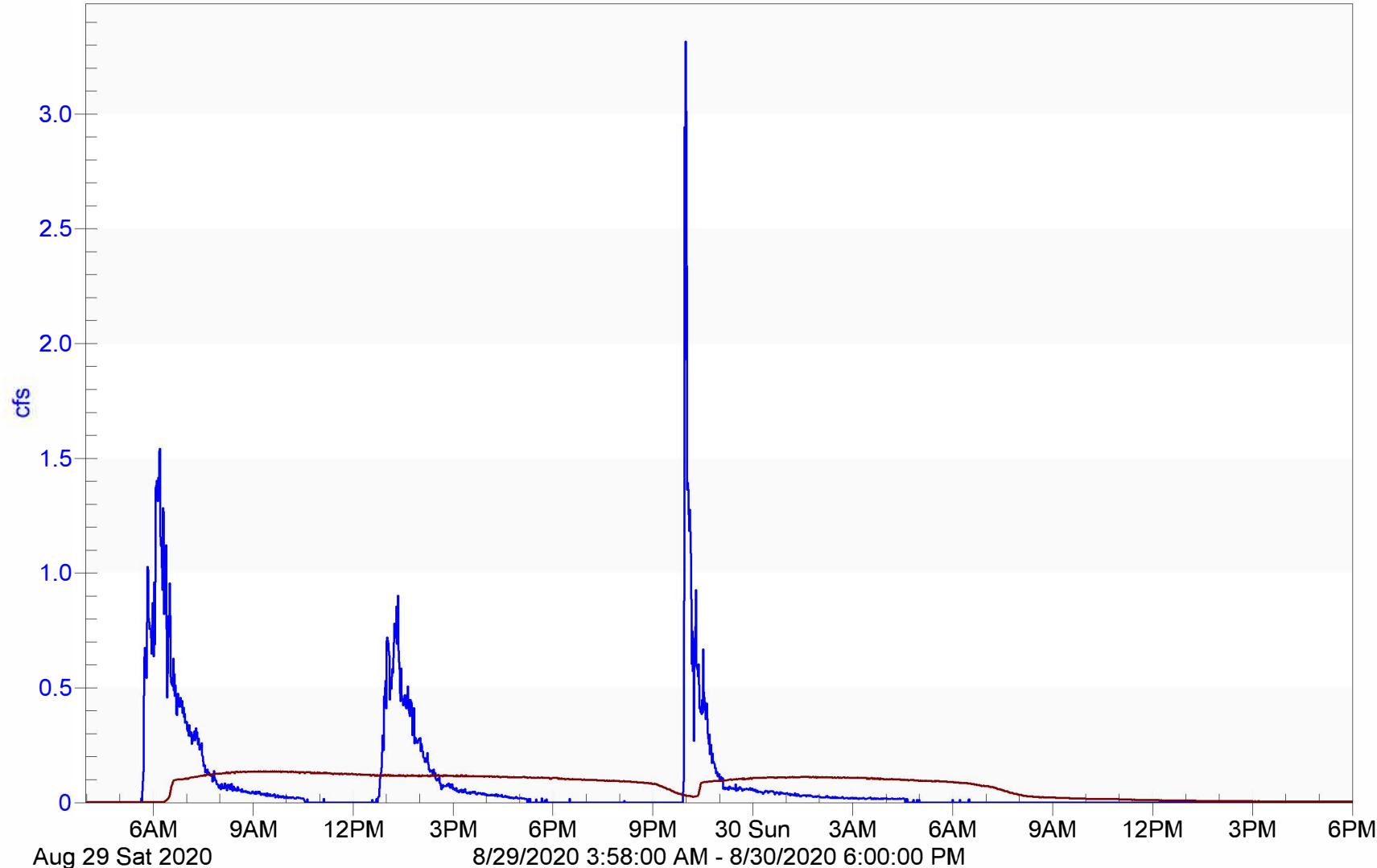
# Storm 9

Kennedy Drive Wetland

Total Rainfall: 0.60 in

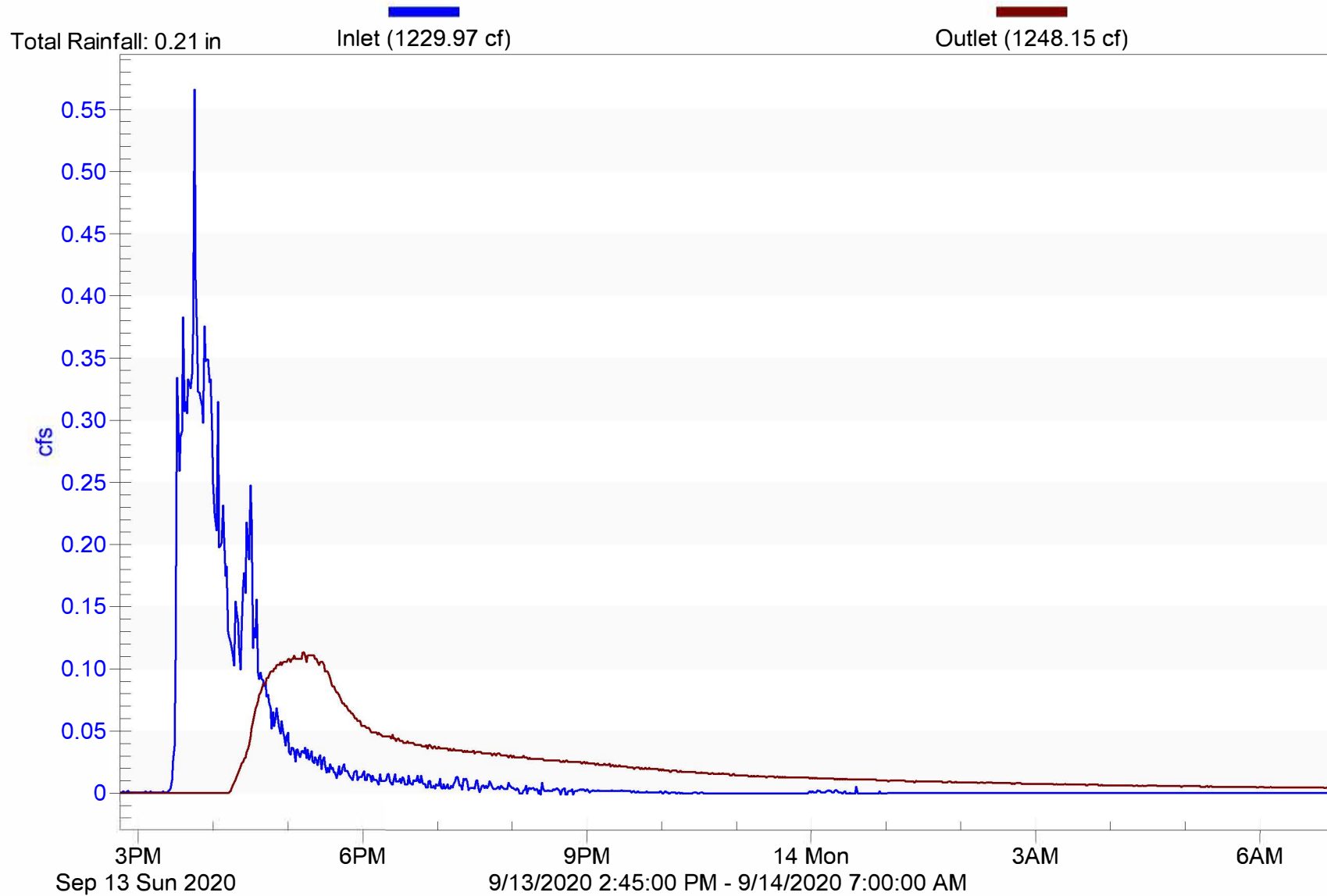
Inlet (10614.40 cf)

Outlet (9857.13 cf)



# Storm 10

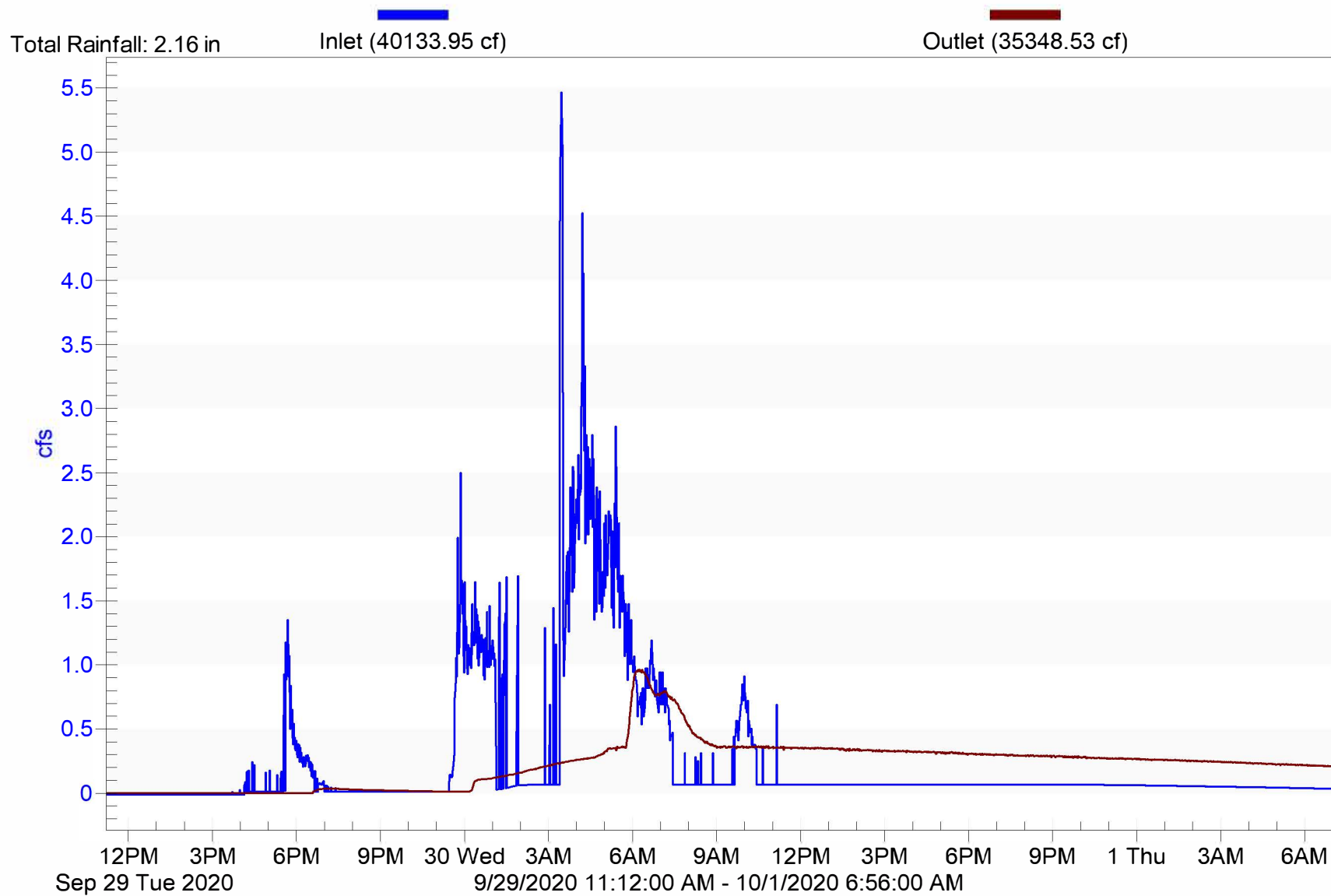
Kennedy Drive Wetland





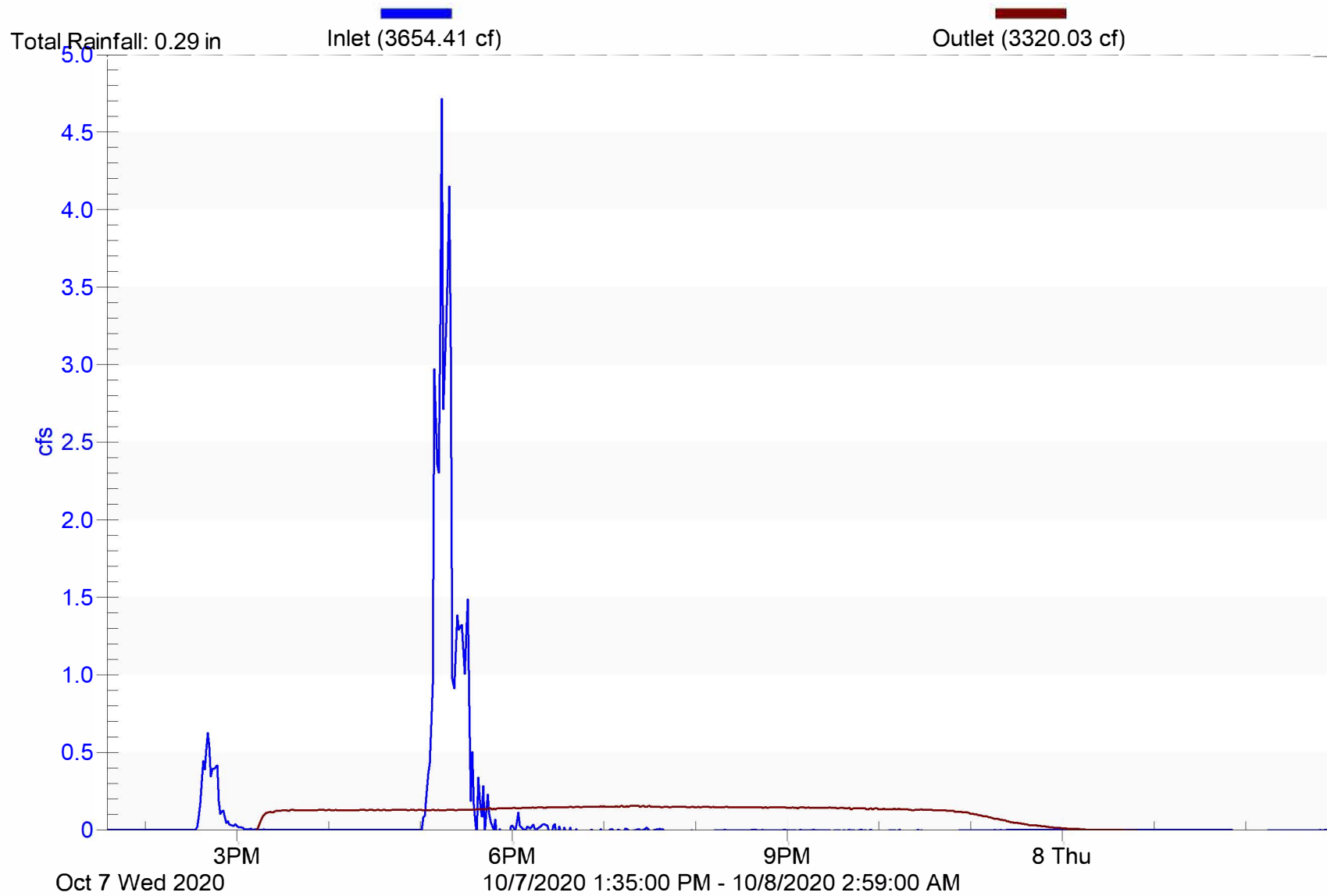
# Storm 11

Kennedy Drive Wetland



# Storm 12

Kennedy Drive Wetland



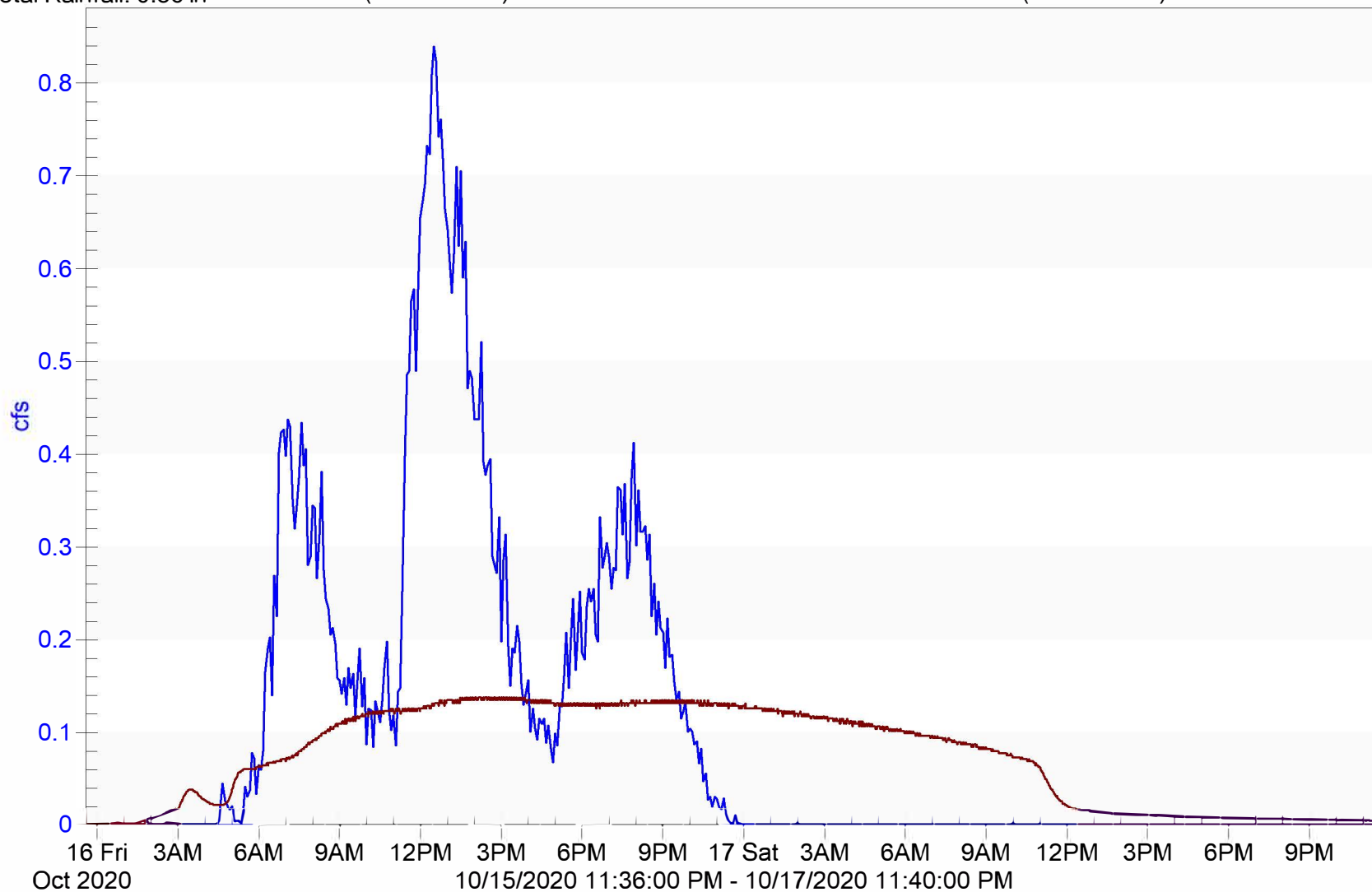
# Storm 14

Kennedy Drive Wetland

Total Rainfall: 0.86 in

Inlet (17264.12 cf)

Outlet (12849.07 cf)



# Storm 15

Kennedy Drive Wetland

