



The
UNIVERSITY
of VERMONT

Vermont Legislative Research Service

<http://www.uvm.edu/~vlrs/>



Vermont Geographic Intelligence Map: Secondary Schools and Economic-Population Hubs (Posted May 9, 2017)

In this report, we compiled and organized data describing where Vermont public high schools are located relative to economic and population hubs. These hubs were determined using three indicators: population density, median family income, and the percentage of families in poverty. We start the report with population density maps, followed by median family income maps, and finally poverty rate maps. We split Vermont into three sections for each indicator: north, central, and south. We included appendices at the end of the report consisting of tables containing the data from which the maps were produced, other germane economic data, and pertinent resources.

Methodology

We created the maps using PolicyMap, accessed through the University of Vermont Bailey/Howe library's website.¹ A map was created for each indicator and each map was subsequently cropped into three separate maps showing the northern, central, and southern regions of Vermont. The northern region of Vermont starts at the Canadian border and stretches south to Montpelier. The central region begins south of Montpelier and extends down to Rutland. The southern region starts in Rutland and ends at the Massachusetts border. The maps include some overlap among regions to provide geographic context. The data used by PolicyMap for the location of public high schools was collected by the National Center for Education Statistics from 2014-2015.²

Please note that to prepare this report, we utilized a range of other research tools. For instance, we were unable to find an official resource listing what towns are serviced by each public high school. We spent some time calling public high schools to ask what towns they serviced, before concluding that this was not an effective method. Eventually, we were referred to the USPS website, which gave us the information we needed. We also explored other methods of creating the maps, but most mapping tools require a paid subscription and proficiency in the software. In addition, we read through multiple reports detailing the economic and educational conditions in Vermont. One of these reports, from the Vermont Department of Labor, is included in Appendix F. Another report, about Massachusetts, included similar research and maps to ours, but had a focus on race that ours does not.

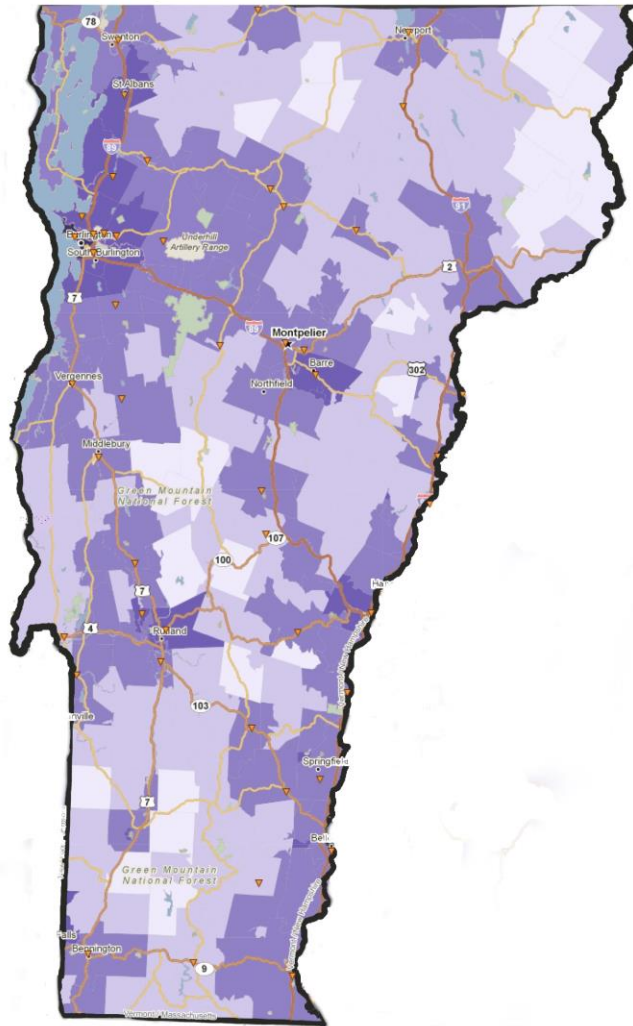
¹ PolicyMap can be found here: <https://www.policymap.com/>.

² "Data Source," *PolicyMap*, accessed April 15, 2017, <http://uvm.policymap.com/data/our-data-directory>.

Population Density

Population density is determined by a count of total people divided by square mile. For Vermont, the population density is determined using data collected by the Decennial Census and American Community Survey (ACS) from 2011 to 2015.³ The average population density in the state of Vermont is 67.99.⁴

Estimated population density between 2011-2015.



Population Density
Year: 2015
Shaded by:
Zip Code Tabulation Area, 2010
■ Insufficient Data
■ 14.40 or less
■ 14.41 - 45.97
■ 45.98 - 155.88
■ 155.89 - 1,163.57
■ 1,163.58 or more
Source: Census

Public Schools: Enrollment and Demographics (NCES)
Source: National Center for Education Statistics
Points filtered by:
Level: High

Figure 1.1: Estimated population density in Vermont, 2011-2015 and location of public high schools.

Note: The location of public high schools is indicated on this and all subsequent maps with an orange triangle. ▼

³ Ibid.

⁴ Estimated population density between 2011-2015, PolicyMap, <https://www.policymap.com/maps> (based on data from Decennial Census and American Community Survey; accessed April 15, 2017).

North

Burlington is the most densely populated area in this region. Population density decreases as distance from Burlington increases, as seen in Fig. 1.2.

Fig. 1.2 illustrates that the northeast corner of the state is more sparsely populated than the rest of the northern region. Consequently, with the exception of Chittenden County, high schools in this region tend to serve a larger geographic area.

Burlington, South Burlington, and Winooski school districts serve more densely populated regions; therefore, the schools tend to be geographically closer together (Fig. 1.2).

Estimated population density between 2011-2015.

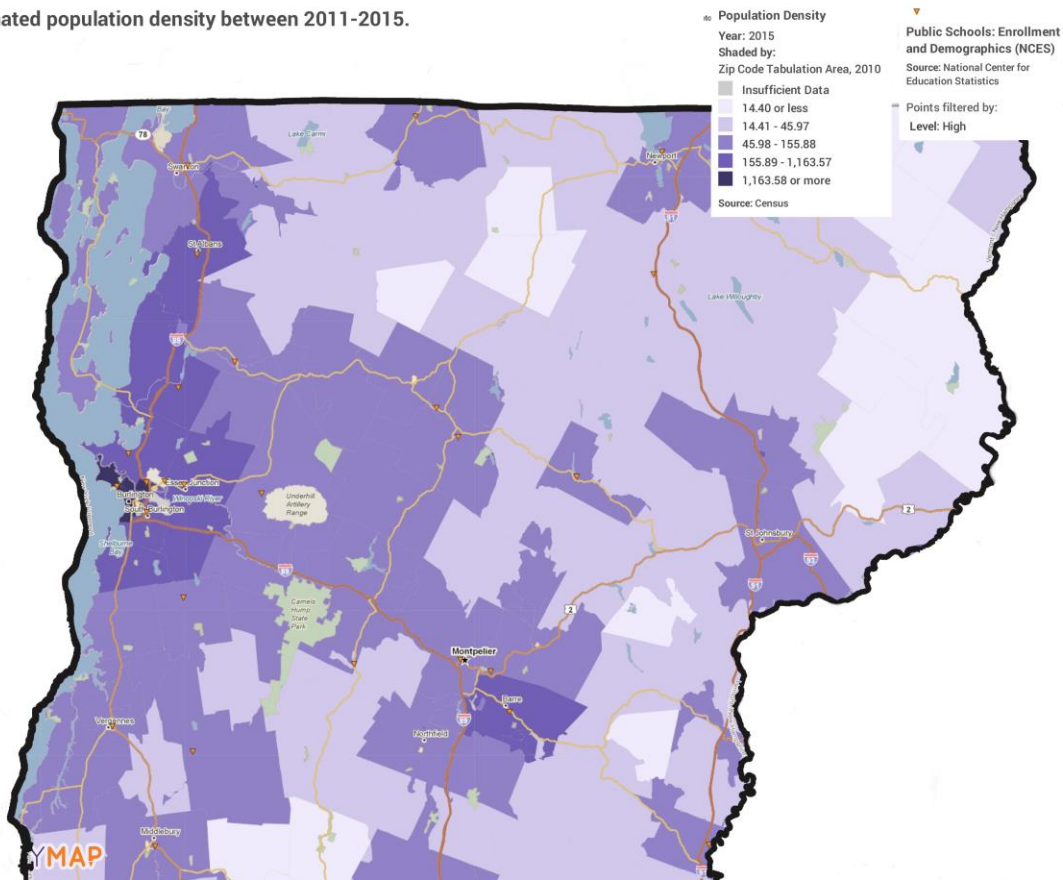


Figure 1.2: Estimated population density in northern Vermont, 2011-2015 and location of public high schools.

Central

As Fig. 1.3 shows, in the central region of the state, population density is correlated with the I-89 corridor and continues south from Burlington to Middlebury on Route 7. As a result, the schools in the central region tend to be on major roadways and near population hubs.

The Green Mountain National Forest, just north of Rutland, is a sizable area of land with less than fifteen people per square mile (Fig. 1.3). The low population density of this area cannot sustain its own public high school.

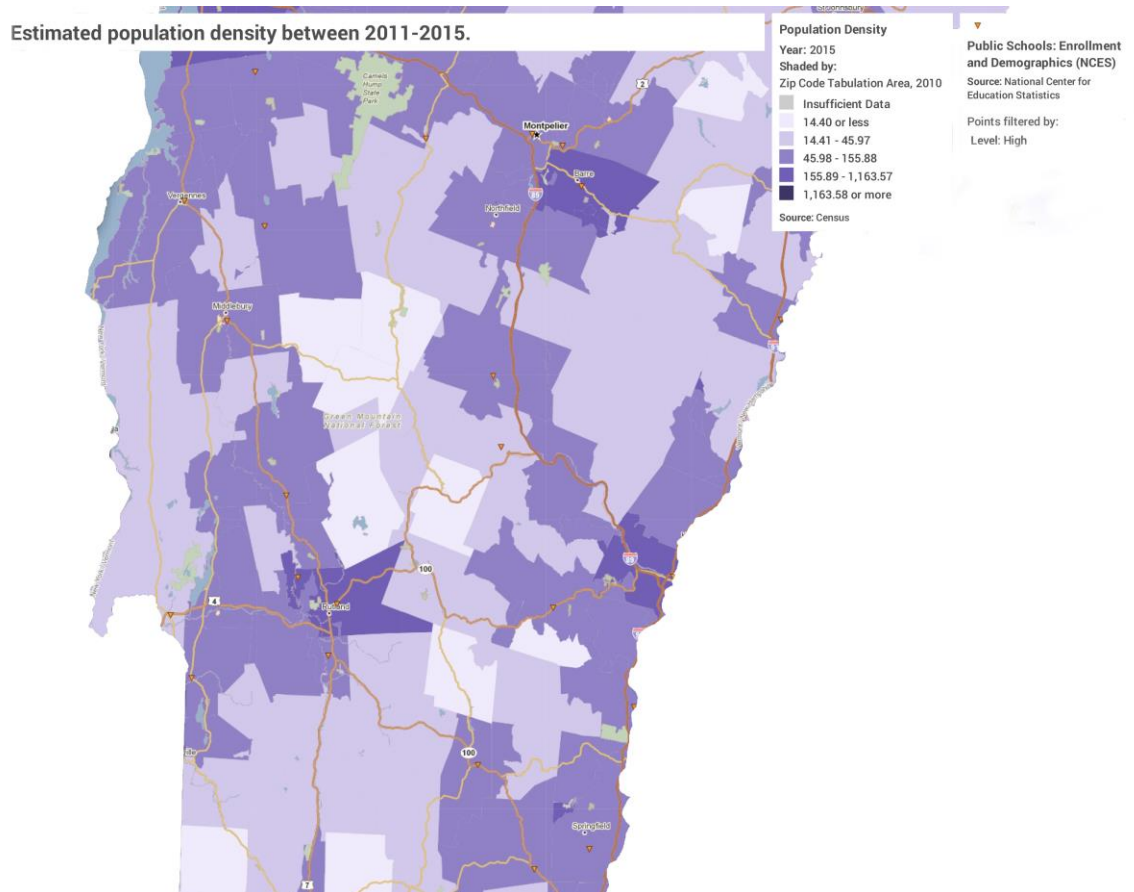


Figure 1.3: Estimated population density in central Vermont, 2011-2015 and location of public high schools.

South

The Green Mountain National Forest continues through the southern region, and is sparsely populated (Figure 1.4). The major highways and population hubs circumvent the forest; therefore, most people either live along I-91 on the eastern side of the state or in Bennington County on the western side of the state, as shown by Fig. 1.4.

Bennington County has an average population density of 54.21 people per square mile, which is similar to Windham's 55.85 people per square mile (App. G). In comparison, the areas in the southern portion of the Green Mountain National Forest have a population density of less than 20 people per square mile (Fig. 1.4). Thus, the schools in the southern region are located outside of the forest (Fig. 1.4).

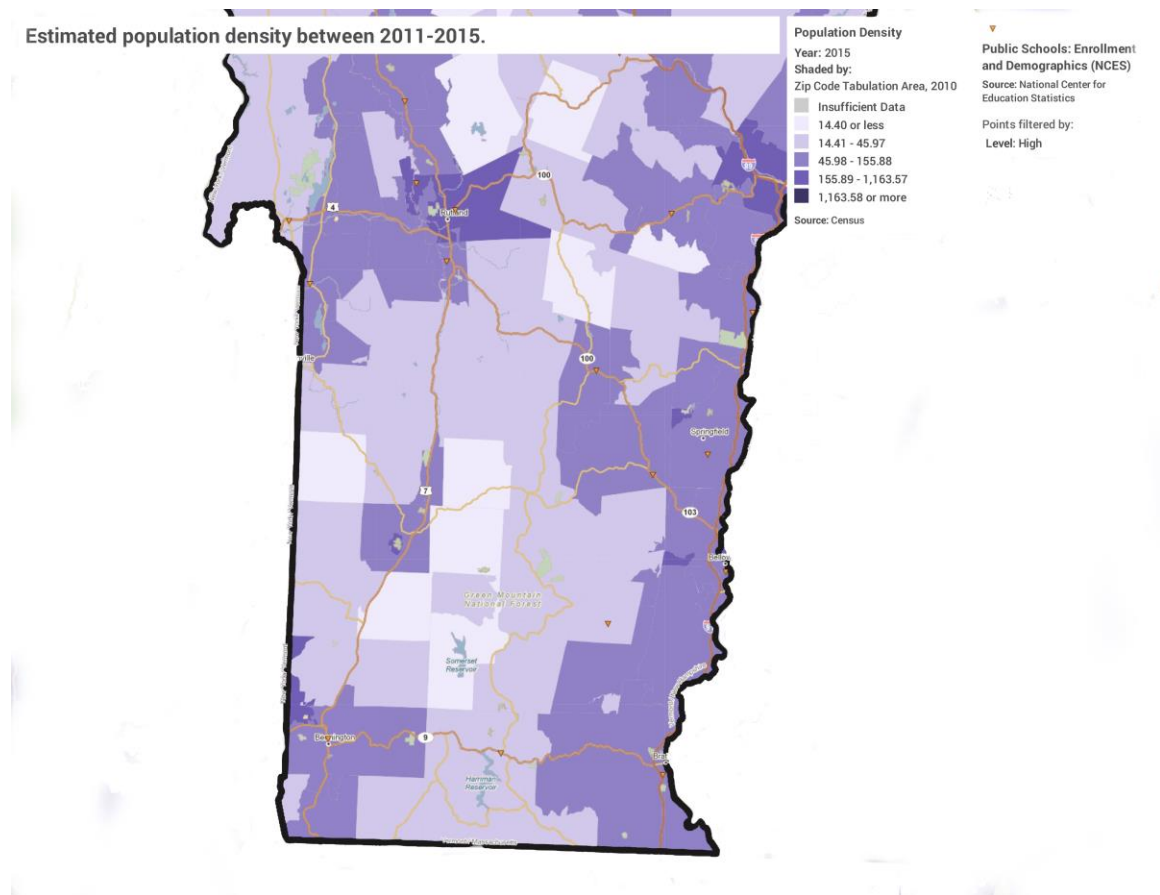


Figure 1.4: Estimated population density in southern Vermont, 2011-2015 and location of public high schools.

Median Family Income

Median family income is measured by finding the middle-income amount, meaning that half of the incomes are higher than the median and half are lower than the median. This data was collected by the Decennial Census and ACS from 2011 to 2015.⁵ The Census Bureau defines a family as “[a] group of two or more people who reside together and who are related by birth, marriage, or adoption.”⁶ The median family income in the state of Vermont is \$70,027.⁷

Estimated typical (median) income of a family between 2011-2015.

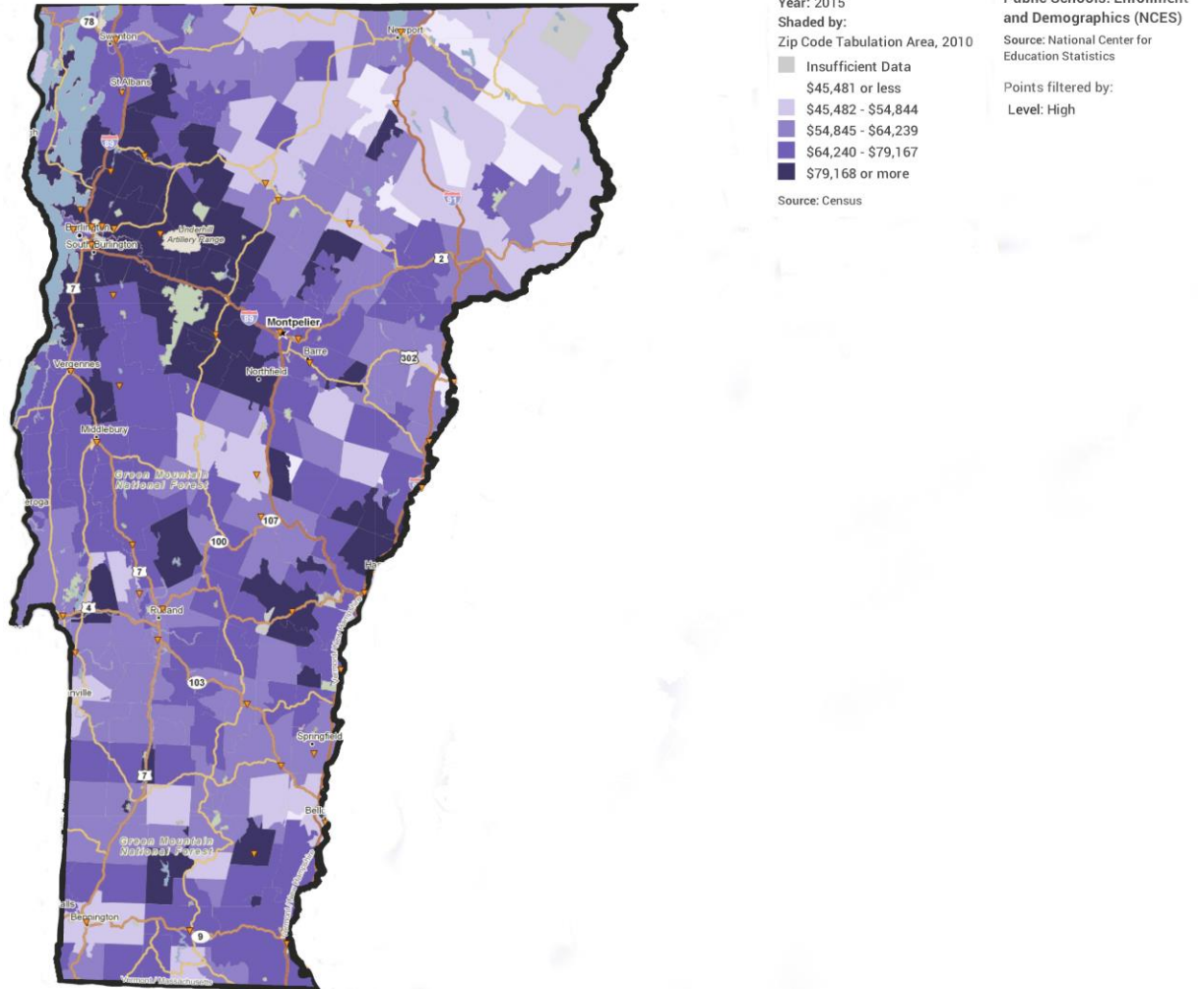


Figure 2.1: Estimated median income of a family in Vermont, 2011-2015 and location of public high schools..

⁵ “Data Source,” *PolicyMap*, accessed April 15, 2017, <http://uvm.policymap.com/data/our-data-directory>.

⁶ “Subject Definitions,” *United States Census Bureau*, accessed April 27, 2017, <https://owl.english.purdue.edu/owl/resource/717/05/>.

⁷ Estimated typical (median) income of a family between 2011-2015, *PolicyMap*, <https://www.policymap.com/maps> (based on data from Decennial Census and American Community Survey; accessed April 15, 2017).

North

Figure 2.2 shows a clear east-west divide in median family income in northern Vermont. The western region, which includes Franklin, Lamoille, Grand Isle, and Chittenden counties, has a significantly higher median family income, at \$72,269.50, than the eastern region, which includes Essex, Caledonia, and Orleans counties, at \$51,250 (App. G).

The lowest median income in this region, \$35,682, appears in the northeast corner of Vermont. The highest median income, \$121,270, is located on the western border just south of Burlington (App. G and Fig. 2.2).

In terms of public high schools, 12 of the 17 schools in the northern region are located in areas with median family incomes within \$10,000 of the statewide family median income (App. G).

Estimated typical (median) income of a family between 2011-2015.

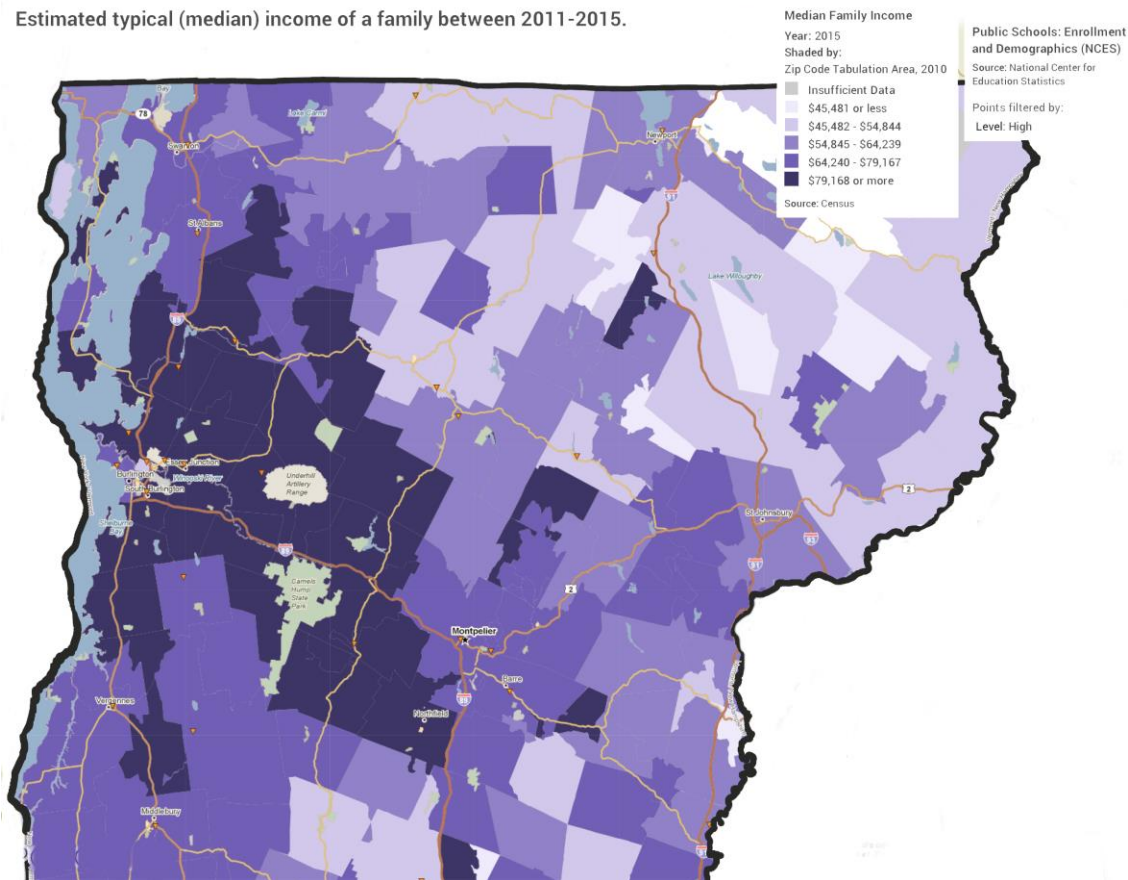


Figure 2.2: Estimated median income of a family in northern Vermont, 2011-2015 and location of public high schools..

Central

The central region has generally high median family incomes. These high-income areas are mostly located around Montpelier, Middlebury, and the border near Hanover, New Hampshire, as seen in Fig. 2.3.

The lowest median income in the central region, located in the middle of the region near I-89 is \$42,317. The highest median income is \$125, 855, which appears just outside of Hanover, New Hampshire (App. G and Fig. 2.3).

All but one area in central Vermont with a school has median family incomes within \$10,000 of the Vermont median (App. G).

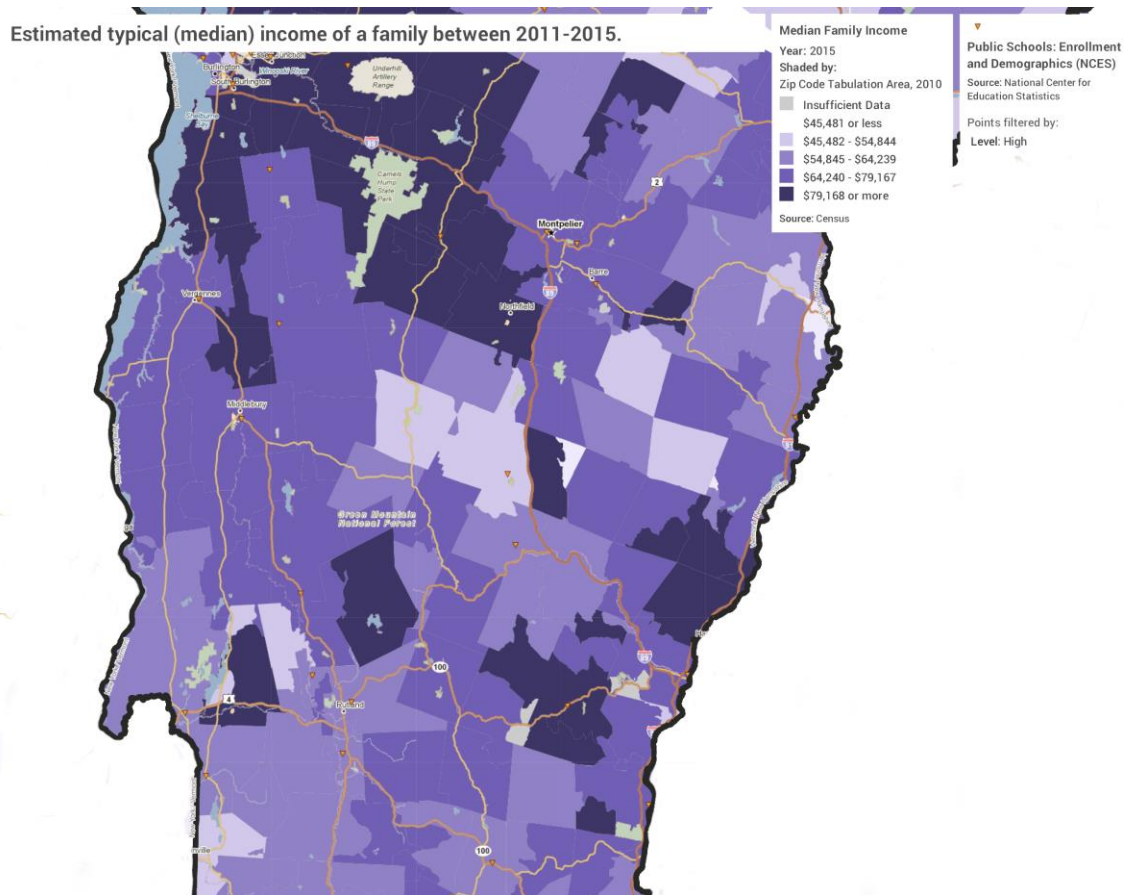


Figure 2.3: Estimated median income of a family in central Vermont, 2011-2015 and location of public high schools..

South

Fig. 2.4 shows that the southern region median family incomes have little variation. The median incomes for most areas in this region are within \$10,000 of the Vermont median (App. G).

The lowest median income in the southern region, \$45,000 is just outside of Bellows Falls. The highest median income, located in the northeastern part of the region close to the New Hampshire border, is \$150,694 (Fig. 2.4 and App. G).

Of the 12 public high schools in this region, 10 are in areas with incomes of at least \$59,205. Bellows Falls, at \$50,607, and Bennington, at \$50,297, are the outliers.

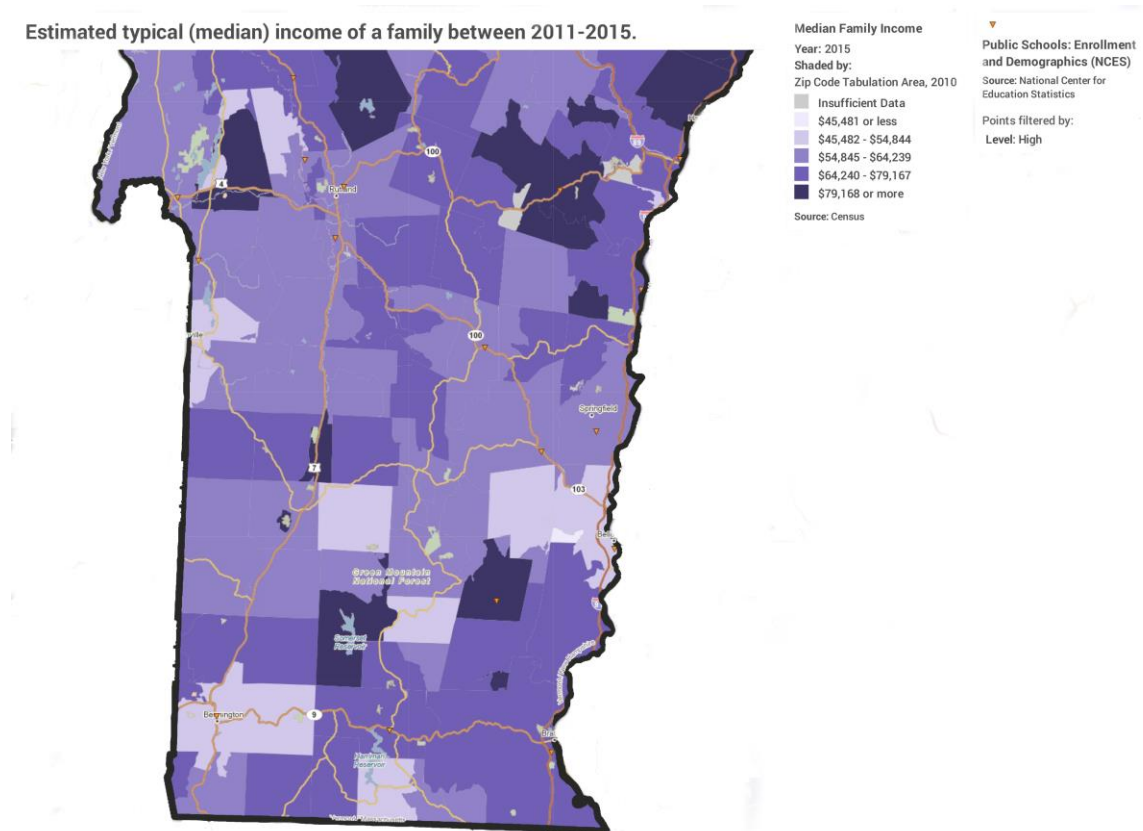


Figure 2.4: Estimated median income of a family in southern Vermont, 2011-2015 and location of public high schools..

Percent of Families in Poverty

The percent of families in poverty includes the percentage of families living below the poverty level. A family, as defined by the Census Bureau is, “A group of two or more people who reside together and who are related by birth, marriage, or adoption.”⁸ The Census calculates a monetary threshold for each family size, if total family income is below that threshold, a family is considered to be in poverty.⁹ The statewide percentage of families living in poverty in Vermont is 7.34%.¹⁰

Estimated percent of all families that live in poverty between 2011-2015.

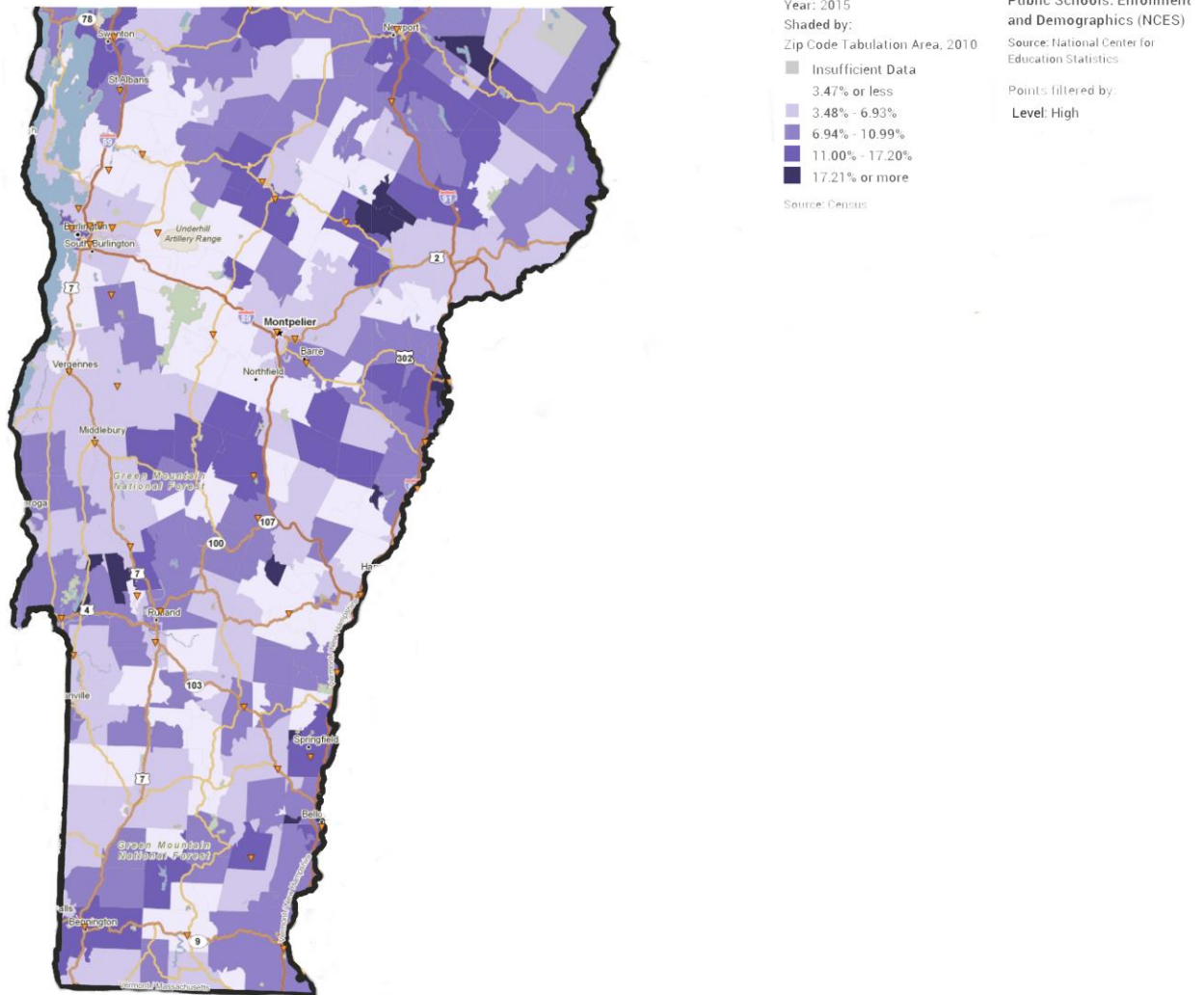


Figure 3.1: Estimated percent of all families living in poverty in Vermont, 2011-2015 and location of public high schools.

⁸ “Subject Definitions,” *United States Census Bureau*, accessed April 27, 2017, <https://owl.english.purdue.edu/owl/resource/717/05/>.

⁹ “How the Census Bureau Measures Poverty,” *United States Census Bureau*, accessed April 27, 2017, <https://www.census.gov/topics/income-poverty/poverty/guidance/poverty-measures.html>.

¹⁰ Estimated percent of all families that live in poverty between 2011-2015, PolicyMap, <https://www.policymap.com/maps> (based on data from Decennial Census and American Community Survey; accessed April 15, 2017).

North

The northeastern region, which includes Orleans, Caledonia, and Essex counties, has a higher percentage of families living in poverty, at 10.2%. In comparison, the western region, including Chittenden and Grand Isle counties, has 5.3% families in poverty (App. G). As seen in Figure 3.2, high schools located in the northeast and northwest regions of the state are in areas of higher family poverty. In fact, 9 of the 17 towns in the northern region with high schools have a higher percentage of families in poverty than the statewide percentage (App. A and App. G). Only three schools in the northern region are located in areas that fall within the map's lowest poverty percentage range (Fig. 3.2 and App. A).

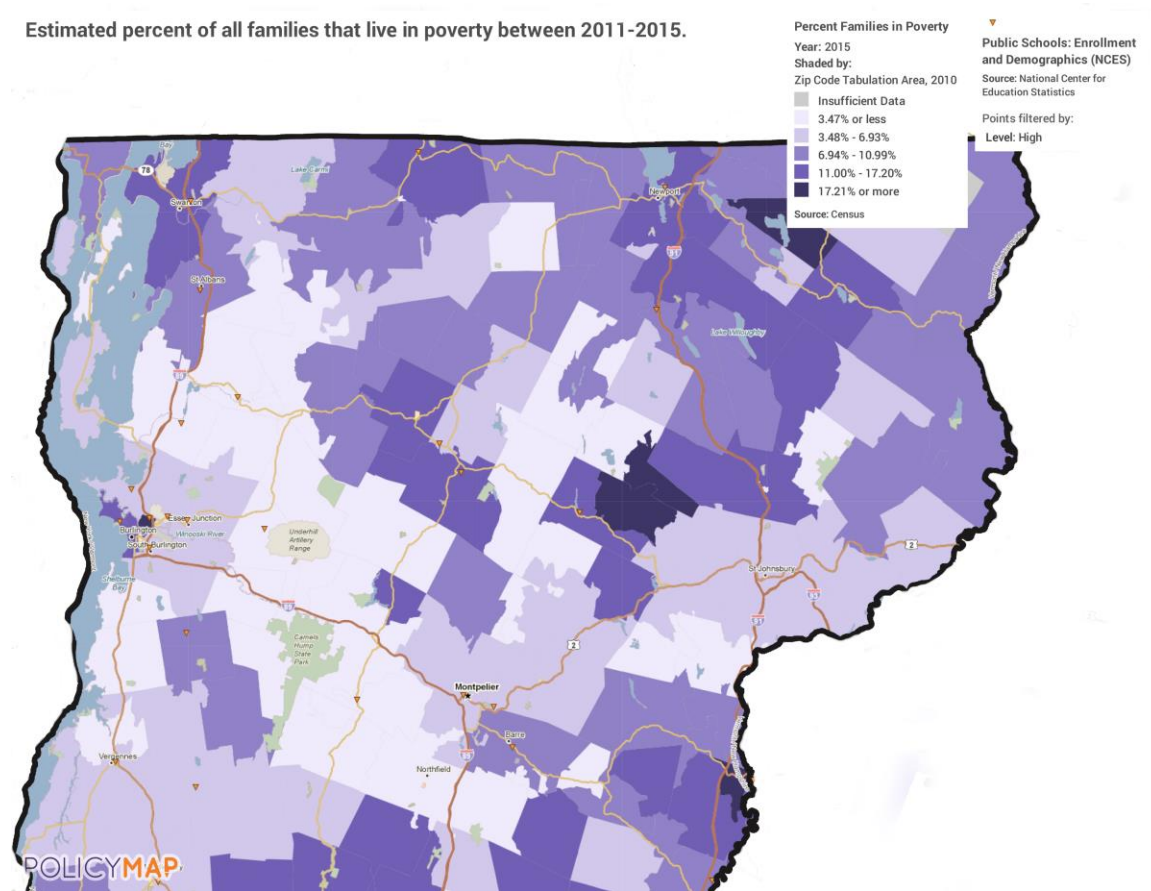


Figure 3.2: Estimated percent of all families living in poverty in northern Vermont, 2011-2015 and location of public high schools.

Central

Addison and Orange counties, in the middle of the central region, with 7.3% families in poverty, make up the most concentrated area of poverty in this region (App. G). In central Vermont, 4 of the 13 towns with high schools have a higher percentage of families in poverty than the statewide percentage (App. B and App. G). Only two schools in the central region are located in areas that fall within the map's lowest poverty percentage range (Fig. 3.3 and App. B).

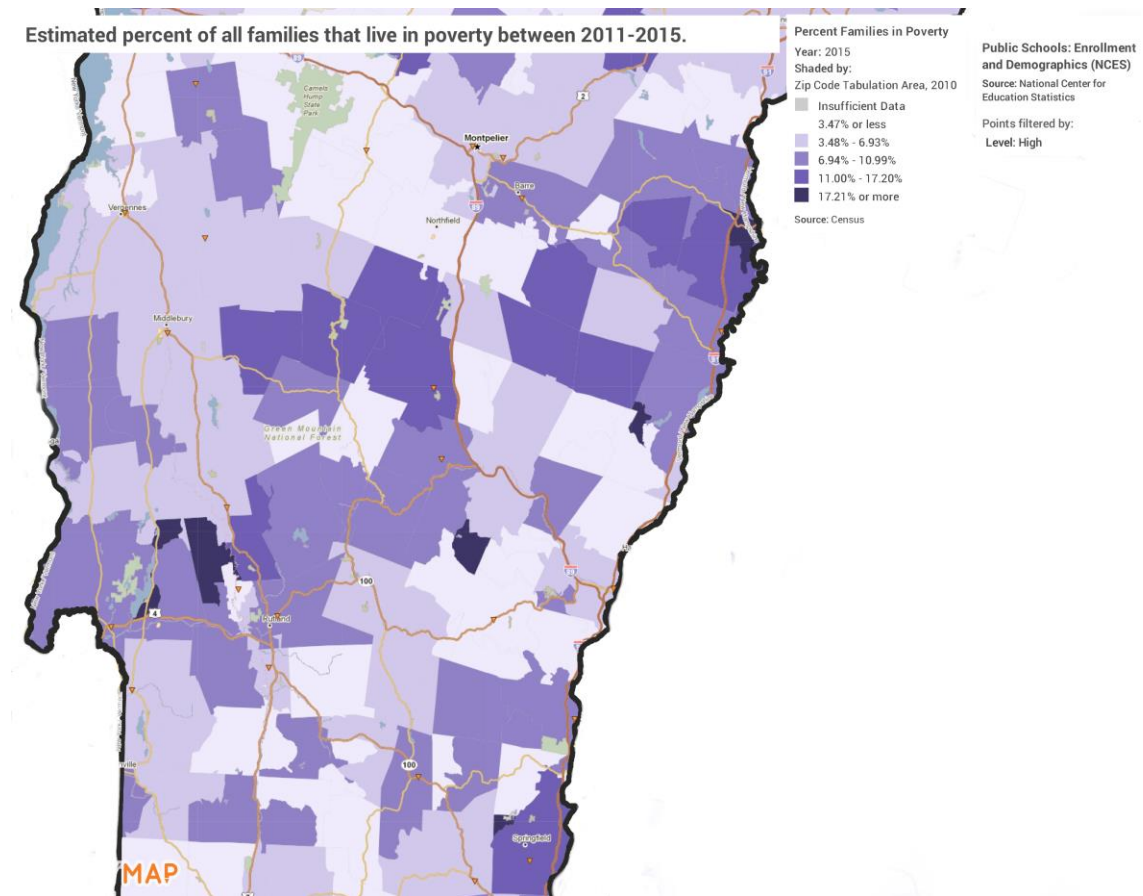


Figure 3.3: Estimated percent of all families living in poverty in central Vermont, 2011-2015 and location of public high schools.

South

Based on the map in Fig. 3.4, it appears that the southeastern region along the New Hampshire border has a higher percentage of families in poverty. Of the 14 towns in which southern region high schools are located, nine have a higher percentage of families in poverty than the statewide percentage (App. C and App. G). Only one school in the southern region is located in an area that falls within the map's lowest poverty percentage range (Fig. 3.4 and App. C).

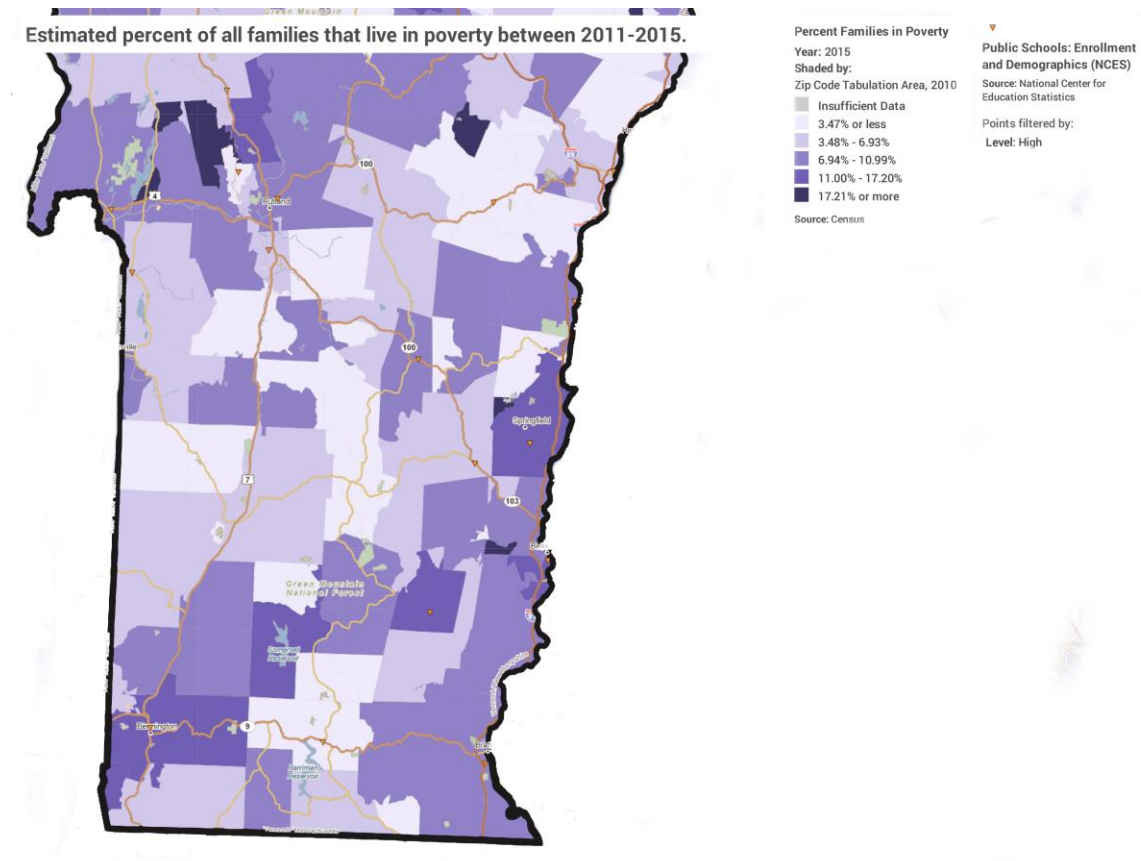


Figure 3.4: Estimated percent of all families living in poverty in southern Vermont, 2011-2015 and the location of public high schools.

Conclusion

Applying population density, median family income, and the family poverty rate to a map of public high schools in Vermont provides information about where schools are located in relation to economic and population hubs. Public high schools are located in areas with high population density, which often correlates to higher median incomes. High schools in southern and northern Vermont tend to be in towns with high poverty rates, whereas Central Vermont high schools are mostly in areas with low poverty rates.

The maps depicting median family income and percent families in poverty have related patterns. Areas with high median family income generally have a low percentage of families in poverty. Conversely, areas with low median family income generally have a high percentage of families

living in poverty. This trend changes in the densely populated areas of Burlington and Winooski, where median family income and poverty are both high.

The maps in this report provide a starting point for examining the locations of public high schools in Vermont relative to economic and population hubs. The limited mapping resources available to VLRS student researchers, however, hindered the creation of a more comprehensive report including additional economic indicators, data about non-public schools and their effects, and age demographics. Further research on the topic, conducted by professionals using a more sophisticated mapping technology, could yield a single multilayered map presenting the relationships among indicators.

This report was completed on May 9, 2017, by William Beacom, Sarah Holmes, and Sophia Yager under the supervision of Professors Eileen Burgin, Alec Ewald and Jack Gierzynski and with the assistance of Research Assistant Laura Felone in response to a request from Representative Laura Sibilica.

We would like to thank Christy Beltrami Yager for her help in cropping the maps used in this report.

Contact: Professor Anthony Gierzynski, 517 Old Mill, The University of Vermont, Burlington, VT 05405, phone 802-656-7973, email agierzyn@uvm.edu.

Disclaimer: This report has been compiled by undergraduate students at the University of Vermont under the supervision of Professor Anthony Jack Gierzynski, Professor Alec Ewald and Professor Eileen Burgin. The material contained in the report does not reflect the official policy of the University of Vermont.

Appendix A: Northern Region Public High Schools¹¹

Town (Zip Code)	High School
Swanton (05488)	Missisquoi Valley UHSD #7
St. Albans (05478)	Bellows Free Academy UHSD #48
Fairfax (05454)	BFA High School- Fairfax
Milton (05468)	Milton Senior High School
Newport (05855)	North Country Senior UHSD #22
Richford (05476)	Richford Junior/Senior High School
Orleans (05860)	Lake Region UHSD #24
Hyde Park (05655)	Lamoille UHSD #18
Morrisville (05661)	Peoples Academy
Hardwick (05843)	Hazen UHSD #26
Hinesburg (05461)	Champlain Valley UHSD #15
Jericho (05465)	Mt. Mansfield USD #17
Colchester (05446)	Colchester High School
Burlington (05408)	Burlington Senior High School
Winooski (05404)	Winooski High School
Essex Junction (05452)	Essex Community Education Center UHSD #46
South Burlington (05403)	South Burlington High School

¹¹ Public Schools: Enrollment and Demographics, PolicyMap, <https://www.policymap.com/maps>, (based on data from the National Center for Education Statistics, Common Core of Data; accessed April 15, 2017).

Appendix B: Central Region Public High Schools¹²

Town (Zip Code)	High School
Montpelier (05602)	Montpelier High School
Montpelier (05602)	U-32 High School (UHSD #32)
Moretown (05660)	Harwood UHSD #19
Barre (05641)	Spaulding UHSD #41
Vergennes (05491)	Vergennes UHSD #5
Bristol (05443)	Mt. Abraham UHSD #28
Bradford (05033)	Oxbow UHSD #30
Middlebury (05753)	Middlebury Senior UHSD #3
Randolph (05060)	Randolph UHSD #2
Bethel (05032)	Whitcomb Junior/Senior High School
Brandon (05733)	Otter Valley UHSD #8
Proctor (05765)	Proctor Junior/Senior High School
White River Junction (05001)	Hartford High School

¹² Ibid.

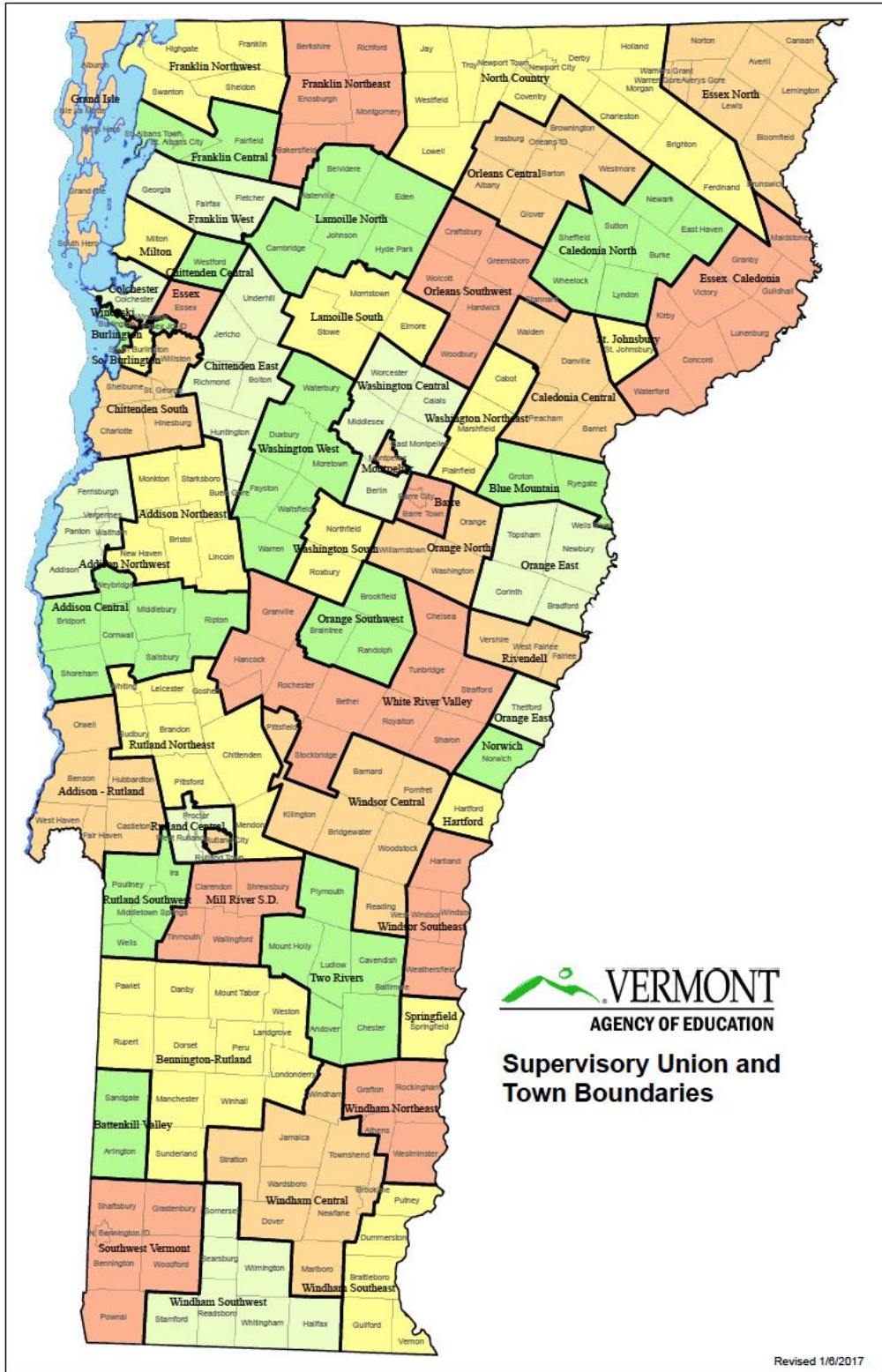
Appendix C: Southern Region Public High Schools¹³

Town (Zip Code)	High School
Rutland (05701)	Rutland Senior High School
Woodstock (05091)	Woodstock Senior UHSD #4
Fair Haven (05743)	Fair Haven UHSD #16
Poultney (05764)	Poultney High School
North Clarendon (05759)	Mill River USD #40
Windsor (05089)	Windsor High School
Ludlow (05149)	Black River USD #39
Springfield (05156)	Springfield High School
Chester (05143)	Green Mountain UHSD #35
Bellows Falls (05158)	Bellows Falls UHSD #27
Townshend (05353)	Leland & Gray UHSD #34
Bennington (05201)	Mt. Anthony Senior UHSD #14
Wilmington (05363)	Twin Valley High School
Brattleboro (05301)	Brattleboro Senior UHSD #6

¹³ Ibid.

Appendix E: School District Map

“Supervisory Union and Town Boundaries.” *Vermont Agency of Education*. Accessed April 8, 2017. <http://education.vermont.gov/sites/aoe/files/documents/edu-vermont-map-of-school-unions-districts-towns.pdf>.



Appendix F: Vermont Department of Labor Report

Thompson, Vicki, Kevin Stapleton, Richard Willey and Matthew Barewicz.
"Economic-Demographic Profile of Vermont 2016." *Vermont Department of Labor*. Accessed
February 2, 2017. <http://www.vtlmi.info/profile2016.pdf>.

The maps in this report on pages 57-140 are particularly relevant to this research subject. It includes useful county-level data on where workers live and where residents work.

Appendix G: PolicyMap Data and City/Town Names

County	Zip Code Tabulation Area	Town/City ¹⁴	Estimated typical (median) income of a family between 2011- 2015. ¹⁵	Estimated population density between 2011- 2015. ¹⁶	Estimated percent of all families that live in poverty between 2011-2015. ¹⁷
Addison	05443	Bristol*	71538	59.08	6.19
Addison	05456	Ferrisburgh	64844	56.94	2.3
Addison	05472	New Haven	80909	40.5	5.7
Addison	05473	North Ferrisburgh	86875	74.76	3.91
Addison	05487	Starksboro	78750	33.07	9.9
Addison	05491	Vergennes*	66914	69	5.66
Addison	05672	Stowe	97054	60.7	2.21
Addison	05735	Castleton	85583	96.52	7.75
Addison	05742	East Wallingford	73750	21.28	7.14
Addison	05748	Hancock	56944	9.6	9
Addison	05751	Killington	78281	19.75	4.05
Addison	05757	Middletown Springs	56111	33.17	3.98
Addison	05761	Pawlet	63661	26.68	3.91
Addison	05767	Rochester	69375	18.44	1.77
Addison	05770	Shoreham	75536	25.61	9.97
Addison	05772	Stockbridge	66563	13.88	8.56
Addison	05819	Saint Johnsbury	62857	106.96	5.03
Bennington	05152	Peru	70000	9.38	6.56
Bennington	05201	Bennington*	50297	154.76	16.56
Bennington	05250	Arlington	62153	40.12	6.19
Bennington	05251	Dorset	71200	40.08	0.92
Bennington	05252	East Arlington	63750	6.29	8

¹⁴ USPS; Search for a City by ZIP Code. United States Postal Service.

<https://m.usps.com/m/ZipLookupAction?search=zip> . accessed April 17, 2017.

¹⁵ Estimated Typical (Median) Income of a Family Between 2011-2017. <http://uvm.policymap.com/maps> . (based on data from Census: Business Dynamics Statistics (BDS); accessed April 10, 2017).

¹⁶ Estimated Population Density Between 2011-2015. Policy Map Data. <http://uvm.policymap.com/maps> . (based on data from Census: Business Dynamics Statistics (BDS); accessed April 10, 2017).

¹⁷ Estimated Percent of all People that are Living in Poverty as of 2011-2015. <http://uvm.policymap.com/maps> . (based on data from Census: Business Dynamics Statistics (BDS); accessed April 10, 2017).

County	Zip Code Tabulation Area	Town/City¹⁴	Estimated typical (median) income of a family between 2011- 2015.¹⁵	Estimated population density between 2011- 2015.¹⁶	Estimated percent of all families that live in poverty between 2011-2015.¹⁷
Bennington	05253	East Dorset	90347	59.26	4.76
Bennington	05254	Manchester	143472	166.82	0
Bennington	05255	Manchester Center	55271	101.56	4.47
Bennington	05257	North Bennington	74219	208.61	3.69
Bennington	05260	North Pownal	76080	33.57	14.67
Bennington	05261	Pownal	60450	91.22	5.76
Bennington	05262	Shaftsbury	71860	33.42	10.65
Bennington	05340	Bondville	53000	12.34	6.76
Bennington	05350	Readsboro	70625	21	8.25
Bennington	05352	Stamford	70568	22.23	5.38
Bennington	05777	West Rutland	62946	70.98	8.89
Caledonia	05042	East Ryegate	56563	20.46	7.8
Caledonia	05046	Groton	59375	19.39	8.25
Caledonia	05050	Mcindo Falls	N/A	287.06	64.29
Caledonia	05069	South Ryegate	53750	49.87	10.98
Caledonia	05820	Albany	45833	26.32	2.69
Caledonia	05822	Barton	54167	45.28	9.29
Caledonia	05829	Derby	45000	63.94	9.8
Caledonia	05833	East Charleston	59135	18.55	6.78
Caledonia	05837	East Haven	41806	7.61	6.8
Caledonia	05845	Irasburg	42826	26.32	8.59
Caledonia	05851	Lyndonville	46373	84.84	12.76
Caledonia	05853	Morgan	40000	20.52	18.95
Caledonia	05866	Sheffield	48750	20.03	9
Caledonia	05867	Sutton	44886	23.01	9.42
Caledonia	05868	Troy	53750	23.59	6.98
Caledonia	05872	West Charleston	55833	32.83	7.14
Caledonia	05874	Westfield	70536	14.39	2.13
Chittenden	05401	Burlington	67522	4852.25	13.51

County	Zip Code Tabulation Area	Town/City¹⁴	Estimated typical (median) income of a family between 2011- 2015.¹⁵	Estimated population density between 2011- 2015.¹⁶	Estimated percent of all families that live in poverty between 2011-2015.¹⁷
Chittenden	05403	South Burlington*	90676	1114.52	5.4
Chittenden	05404	Winooski*	48017	4960.45	19.5
Chittenden	05405	Burlington	N/A	18612.78	N/A
Chittenden	05408	Burlington*	77009	2304.13	11.72
Chittenden	05439	Colchester	N/A	9131.25	N/A
Chittenden	05444	Cambridge	77241	74.35	1.93
Chittenden	05445	Charlotte	121270	92.63	1.02
Chittenden	05446	Colchester*	83201	431.31	5.87
Chittenden	05452	Essex Junction*	92674	495.82	4.84
Chittenden	05454	Fairfax*	91034	98.69	0.24
Chittenden	05461	Hinesburg*	76655	112.05	7.69
Chittenden	05462	Huntington	84766	49.42	1.16
Chittenden	05465	Jericho*	106324	124.05	1.51
Chittenden	05468	Milton*	81871	206.34	1.32
Chittenden	05477	Richmond	89063	96.12	2.99
Chittenden	05482	Shelburne	119259	311.34	2.2
Chittenden	05489	Underhill	97798	60.19	1.93
Chittenden	05494	Westford	94722	50.89	0.58
Chittenden	05495	Williston	93239	291.75	3.9
Essex	05825	Coventry	70313	70	3.92
Essex	05839	Glover	61563	26.88	6.12
Essex	05847	Lowell	47188	14.3	7.41
Essex	05859	North Troy	46713	36.3	7.93
Essex	05902	Beecher Falls	38750	155.88	16.07
Essex	05903	Canaan	52083	15.62	10.23
Essex	05904	Gilman	26667	437.64	37.5
Essex	05905	Guildhall	45917	4.11	7.47
Essex	05906	Lunenburg	48571	27.05	4.21
Essex	05907	Norton	49500	1.33	4.55

County	Zip Code Tabulation Area	Town/City¹⁴	Estimated typical (median) income of a family between 2011- 2015.¹⁵	Estimated population density between 2011- 2015.¹⁶	Estimated percent of all families that live in poverty between 2011-2015.¹⁷
Franklin	05441	Bakersfield	66389	31.55	3.77
Franklin	05447	East Berkshire	73750	245.81	0
Franklin	05448	East Fairfield	73182	23.27	2.27
Franklin	05450	Enosburg Falls	61571	42.91	7.91
Franklin	05455	Fairfield	81875	31.99	1.11
Franklin	05457	Franklin	72083	37.67	4.07
Franklin	05459	Highgate Center	56708	90.94	4.86
Franklin	05471	Montgomery Center	58750	16.96	4.13
Franklin	05476	Richford*	49290	50.23	12.88
Franklin	05478	Saint Albans*	75429	244.71	7.31
Franklin	05481	Saint Albans Bay	N/A	0	N/A
Franklin	05483	Sheldon	66071	74.29	4.29
Franklin	05485	Sheldon Springs	N/A	217.45	0
Franklin	05488	Swanton*	64571	118.97	13.47
Grand Isle	05440	Alburgh	61250	58.78	9.71
Grand Isle	05458	Grand Isle	78309	132.8	5.48
Grand Isle	05463	Isle La Motte	51500	73.18	6.25
Grand Isle	05474	North Hero	80000	67.56	3.03
Grand Isle	05486	South Hero	81346	105.66	4.22
Lamoille	05442	Belvidere Center	51500	10.51	9.38
Lamoille	05464	Jeffersonville	80801	50.66	9.43
Lamoille	05492	Waterville	63375	41.72	9.95
Lamoille	05653	Eden Mills	49500	15.17	6.45
Lamoille	05654	Graniteville	56346	226.21	0
Lamoille	05656	Johnson	48333	76.64	13.9
Lamoille	05657	Lake Elmore	104107	498.66	0
Lamoille	05658	Marshfield	58036	36.85	6.63
Lamoille	05663	Northfield	80774	123.2	2.96
Lamoille	05673	Waitsfield	91141	44.7	0.43

County	Zip Code Tabulation Area	Town/City¹⁴	Estimated typical (median) income of a family between 2011- 2015.¹⁵	Estimated population density between 2011- 2015.¹⁶	Estimated percent of all families that live in poverty between 2011-2015.¹⁷
Lamoille	05681	Woodbury	94524	14.57	0
Orange	05033	Bradford*	62589	96.33	8.98
Orange	05036	Brookfield	74219	30.75	6.4
Orange	05038	Chelsea	58839	33.55	12.47
Orange	05039	Corinth	74844	22.68	5.02
Orange	05040	East Corinth	65147	48.63	10.32
Orange	05041	East Randolph	42317	79.9	0
Orange	05043	East Thetford	85917	84.94	4.37
Orange	05045	Fairlee	78600	38.4	9.59
Orange	05051	Newbury	57885	32.4	12.39
Orange	05058	Post Mills	57188	69.48	34.78
Orange	05060	Randolph*	54347	63.85	13.15
Orange	05061	Randolph Center	83167	59.85	0
Orange	05070	South Strafford	93750	31.49	0
Orange	05072	Strafford	75865	22.41	0
Orange	05075	Thetford Center	120156	49.61	1.65
Orange	05076	Topsham	58750	13.42	16.67
Orange	05077	Tunbridge	69286	26.89	3.92
Orange	05079	Vershire	53958	19.59	13.55
Orange	05081	Wells River	34750	55.79	22.4
Orange	05083	West Fairlee	43750	297.03	10.91
Orange	05086	West Topsham	62778	31.31	9.27
Orange	05676	Waterbury	83059	50.03	3.13
Orange	05680	Wolcott	60521	32.02	3.23
Orleans	05821	Barnet	71875	31.66	2.56
Orleans	05824	Concord	45625	20.68	6.82
Orleans	05826	Craftsbury	63036	29.46	1.75
Orleans	05827	Craftsbury Common	63750	24.04	7.46
Orleans	05828	Danville	77500	36.11	4.58

County	Zip Code Tabulation Area	Town/City ¹⁴	Estimated typical (median) income of a family between 2011- 2015. ¹⁵	Estimated population density between 2011- 2015. ¹⁶	Estimated percent of all families that live in poverty between 2011-2015. ¹⁷
Orleans	05830	Derby Line	54395	54.04	7.52
Orleans	05832	East Burke	67750	26.79	1.93
Orleans	05836	East Hardwick	58409	36.56	18.48
Orleans	05841	Greensboro	64028	14.65	0
Orleans	05842	Greensboro Bend	44844	32.35	31.91
Orleans	05843	Hardwick*	50481	71.39	14.12
Orleans	05846	Island Pond	35682	17.94	11.92
Orleans	05850	Lyndon Center	N/A	308.34	0
Orleans	05855	Newport*	55769	130.64	13.34
Orleans	05857	Newport Center	56394	40.88	9.09
Orleans	05858	North Concord	57750	5.09	8.57
Orleans	05860	Orleans*	53958	34.3	11.78
Orleans	05862	Peacham	77250	12.4	0
Orleans	05871	West Burke	53056	32.4	14.08
Orleans	05873	West Danville	73958	23.69	4.02
Orleans	05875	Barton	90833	31.28	4.48
Orleans	05901	Averill	N/A	0.5	N/A
Rutland	05730	Belmont	71875	18.82	0
Rutland	05732	Bomoseen	47083	94.5	23.53
Rutland	05733	Brandon*	64710	50.69	4.24
Rutland	05734	Bridport	78750	28.82	9.14
Rutland	05736	Center Rutland	76563	122.56	4.32
Rutland	05737	Chittenden	81563	11.64	7.18
Rutland	05738	Cuttingsville	77000	22.11	2.32
Rutland	05739	Danby	63333	27.41	7.08
Rutland	05740	East Middlebury	N/A	0	N/A
Rutland	05743	Fair Haven*	55735	41.76	7.79
Rutland	05744	Florence	51705	24	18.88
Rutland	05747	Granville	53750	5.44	11.84

County	Zip Code Tabulation Area	Town/City¹⁴	Estimated typical (median) income of a family between 2011- 2015.¹⁵	Estimated population density between 2011- 2015.¹⁶	Estimated percent of all families that live in poverty between 2011-2015.¹⁷
Rutland	05753	Middlebury*	77679	123.42	5.92
Rutland	05758	Mount Holly	61688	26.97	6.07
Rutland	05759	North Clarendon*	59375	98.08	4.94
Rutland	05760	Orwell	61667	31.68	5.92
Rutland	05762	Pittsfield	59531	29.46	10.9
Rutland	05763	Pittsford	73810	100.42	12.83
Rutland	05764	Poultney*	61328	78.03	6.1
Rutland	05765	Proctor*	62578	207.67	2.3
Rutland	05766	Ripton	68500	13.27	12.2
Rutland	05774	Wells	50313	48.07	4.28
Rutland	05775	West Pawlet	51406	42.69	7.69
Rutland	05776	West Rupert	67321	13.35	2.59
Rutland	05778	Whiting	67788	29.22	10.55
Washington	05602	Montpelier*	77319	146.18	6.92
Washington	05640	Adamant	73750	56.22	0
Washington	05641	Barre*	67665	316.72	9.32
Washington	05647	Cabot	58571	39.72	13.03
Washington	05648	Calais	82917	37.11	0
Washington	05649	East Barre	80938	45.86	2.43
Washington	05650	East Calais	72976	52.45	5.25
Washington	05651	East Montpelier	71375	92.37	5.47
Washington	05652	Eden	70179	28.95	10.2
Washington	05655	Hyde Park*	54250	88.02	5.01
Washington	05660	Moretown*	82431	41.93	0.63
Washington	05661	Morrisville*	62384	87.36	11.24
Washington	05664	Northfield Falls	N/A	8407.9	0
Washington	05667	Plainfield	68906	46.47	6.43
Washington	05669	Roxbury	57639	16.03	14.66
Washington	05674	Warren	79063	40.45	5.49

County	Zip Code Tabulation Area	Town/City¹⁴	Estimated typical (median) income of a family between 2011- 2015.¹⁵	Estimated population density between 2011- 2015.¹⁶	Estimated percent of all families that live in poverty between 2011-2015.¹⁷
Washington	05675	Washington	52672	27.67	13.13
Washington	05677	Waterbury Center	84708	141.92	14
Washington	05678	Websterville	N/A	165.43	0
Washington	05679	Williamstown	69764	84.92	1.96
Washington	05682	Worcester	60208	23.52	7.45
Washington	05701	Rutland*	61050	347.28	10.6
Windham	05101	Bellows Falls	50607	128.18	8.64
Windham	05141	Cambridgeport	46458	99.16	0
Windham	05146	Grafton	54219	17.11	9.66
Windham	05148	Londonderry	61635	36.52	0
Windham	05154	Saxtons River	45000	226.41	35.61
Windham	05155	South Londonderry	61250	19.03	0
Windham	05158	Westminster*	52727	91.29	11.01
Windham	05301	Brattleboro*	64719	111.8	10.21
Windham	05341	East Dover	58971	31.21	2.24
Windham	05342	Jacksonville	60893	39.38	6.32
Windham	05343	Jamaica	59722	18.89	9.66
Windham	05345	Newfane	68417	46.5	5.9
Windham	05346	Putney	69417	74.57	7.74
Windham	05353	Townshend*	80469	24.19	12.3
Windham	05354	Vernon	73889	105.65	8.52
Windham	05355	Wardboro	50000	22.19	7.83
Windham	05356	West Dover	72176	41.93	0
Windham	05358	West Helifax	61250	16.04	3.33
Windham	05359	West Townshend	56250	15.86	4.2
Windham	05360	West Wardsboro	92639	4.91	13.92
Windham	05361	Whitingham	54519	29.13	6.42
Windham	05362	Williamsville	96250	42.96	8.33
Windham	05363	Wilmington*	73654	34.46	2.34

County	Zip Code Tabulation Area	Town/City¹⁴	Estimated typical (median) income of a family between 2011- 2015.¹⁵	Estimated population density between 2011- 2015.¹⁶	Estimated percent of all families that live in poverty between 2011-2015.¹⁷
Windsor	05001	White River Junction*	76161	208.71	5.24
Windsor	05031	Barnard	58625	16.64	18.18
Windsor	05032	Bethel*	62778	34.02	7.34
Windsor	05034	Bridgewater	N/A	55.81	3.06
Windsor	05035	Bridgewater Corners	65781	20.16	3.83
Windsor	05037	Brownsville	90833	45.75	7.79
Windsor	05048	Hartland	70417	96.06	1.17
Windsor	05052	North Hartland	52130	87.15	0
Windsor	05053	North Pomfret	86938	46.84	0
Windsor	05055	Norwich	125855	81.42	1.25
Windsor	05056	Plymouth	70556	8.83	5.32
Windsor	05059	Quechee	N/A	146.94	9.41
Windsor	05062	Reading	58083	18.31	9.66
Windsor	05065	Sharon	74444	33.86	8.22
Windsor	05067	South Pomfret	72917	15.75	0
Windsor	05068	South Royalton	61089	60.84	6.79
Windsor	05071	South Woodstock	150694	9.01	0
Windsor	05084	West Hartford	56790	87.23	0
Windsor	05089	Windsor*	66181	120.69	8.53
Windsor	05091	Woodstock*	91750	48.93	1.81
Windsor	05142	Cavendish	70000	24.97	9.68
Windsor	05143	Chester*	62581	47.63	3.6
Windsor	05149	Ludlow*	59205	50.99	9.48
Windsor	05150	North Springfield	68690	350.77	18.86
Windsor	05151	Perkinsville	71012	49.35	0.45
Windsor	05153	Proctorsville	63929	66.22	2.31
Windsor	05156	Springfield*	57438	153.79	15.38
Windsor	05161	Weston	77321	16.27	3.47
Windsor	05769	Salisbury	70547	38.06	5.81

County	Zip Code Tabulation Area	Town/City¹⁴	Estimated typical (median) income of a family between 2011- 2015.¹⁵	Estimated population density between 2011- 2015.¹⁶	Estimated percent of all families that live in poverty between 2011-2015.¹⁷
Windsor	05773	Wallingford	61875	31.08	1.15
* An asterisk next to a town name indicates that there is a secondary school located in that town.					