

Identifying Spotted Wing Drosophila Adults

Alan T. Eaton

UNH Cooperative Extension

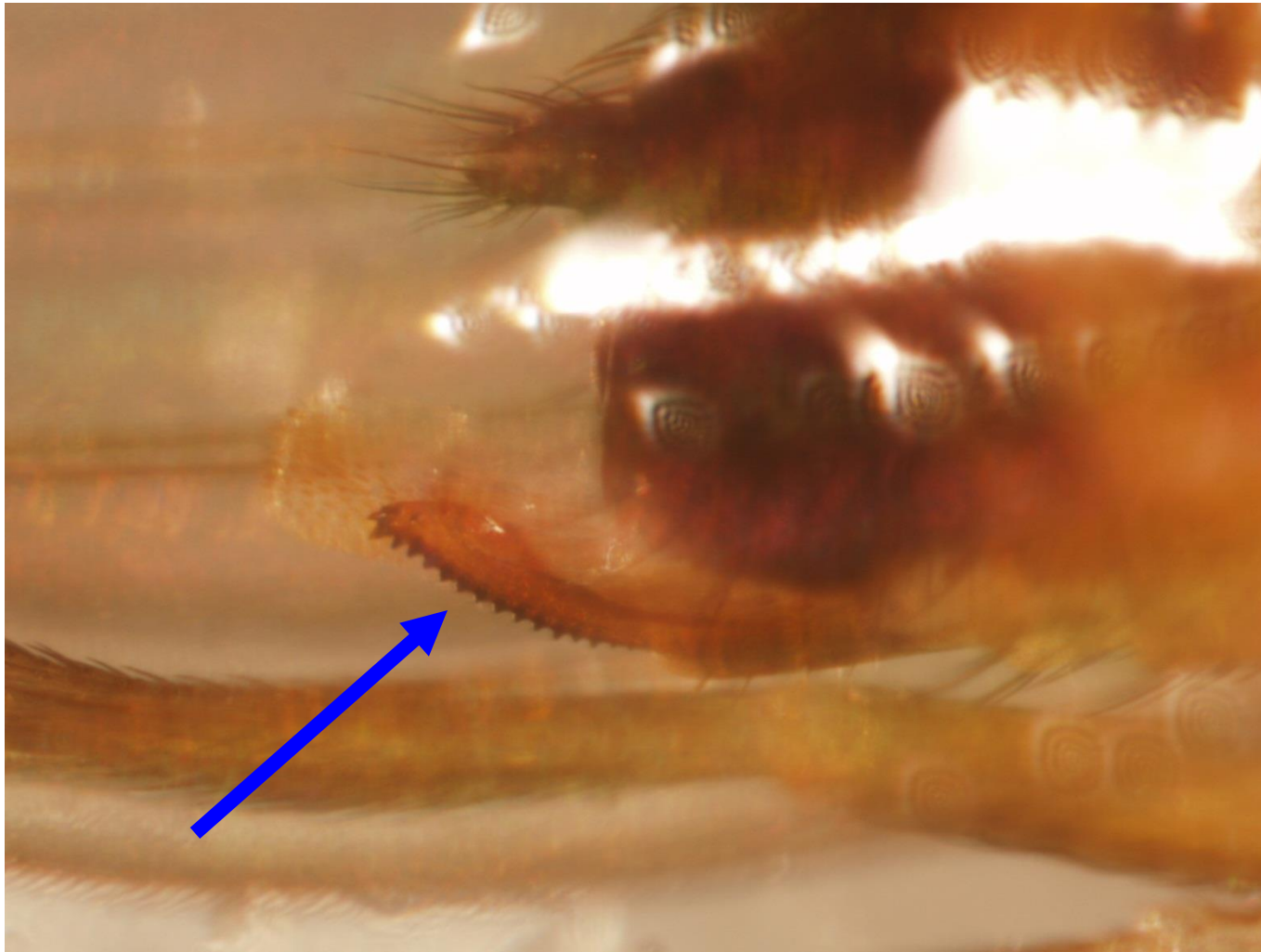
April 10, 2014

We have 40 spp of drosophilids here.

Both male and female SWD have unique characteristics.



Unlike our other Drosophilids, the female of SWD has a saw-edged egg-layer, enabling it to lay eggs through the skin of sound fruit.

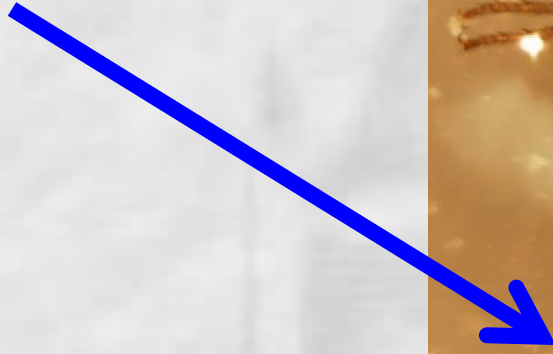


**To see this with confidence,
you really need a microscope.**

Soooo...

Don't bother trying to count females.

Males have a single spot near the tip of each wing. No other species here looks quite like it.















A.T. EATON

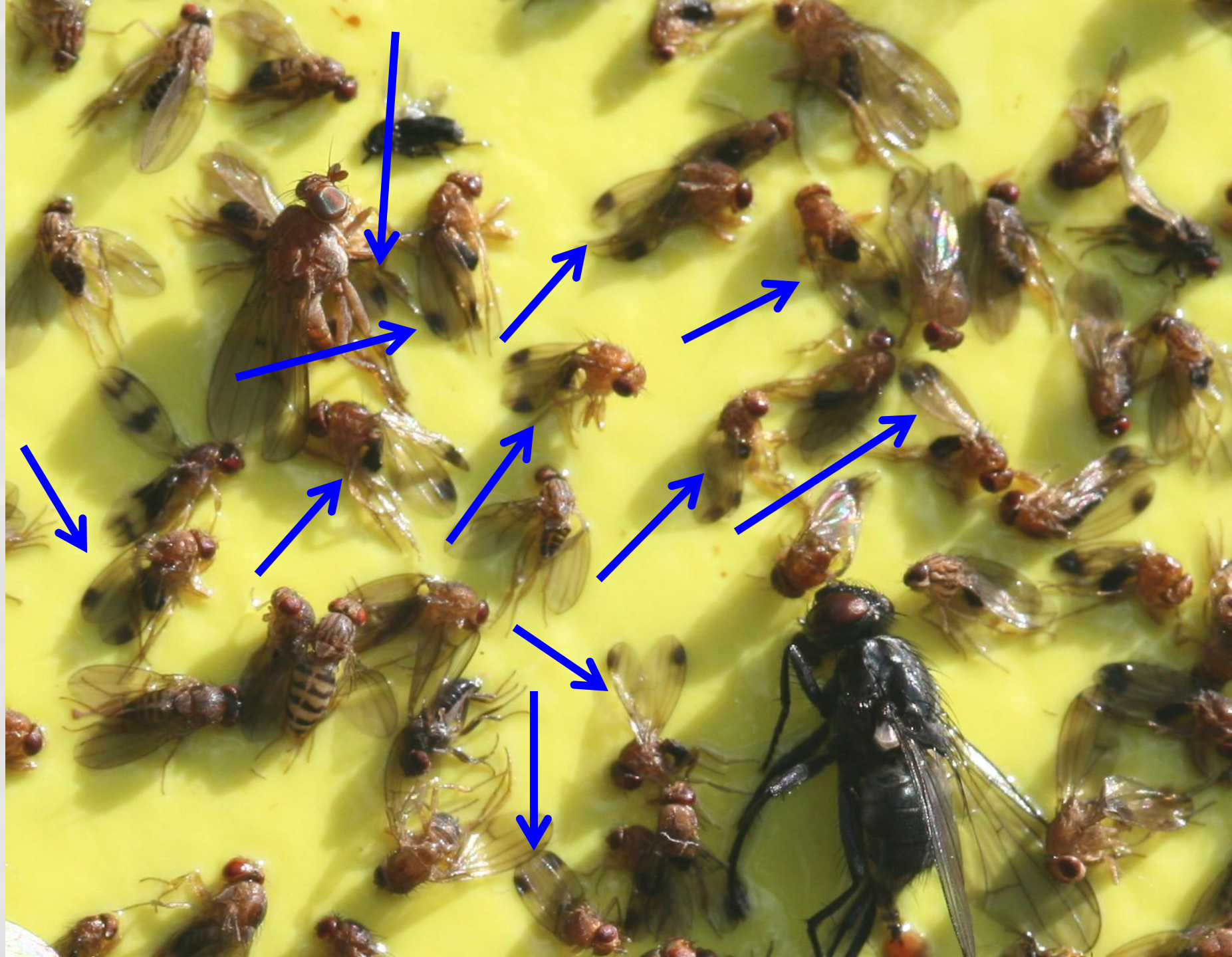














***Zaprionus indianus* might show up in SWD traps. In 2012: found in PA, MD, CT**

A



B

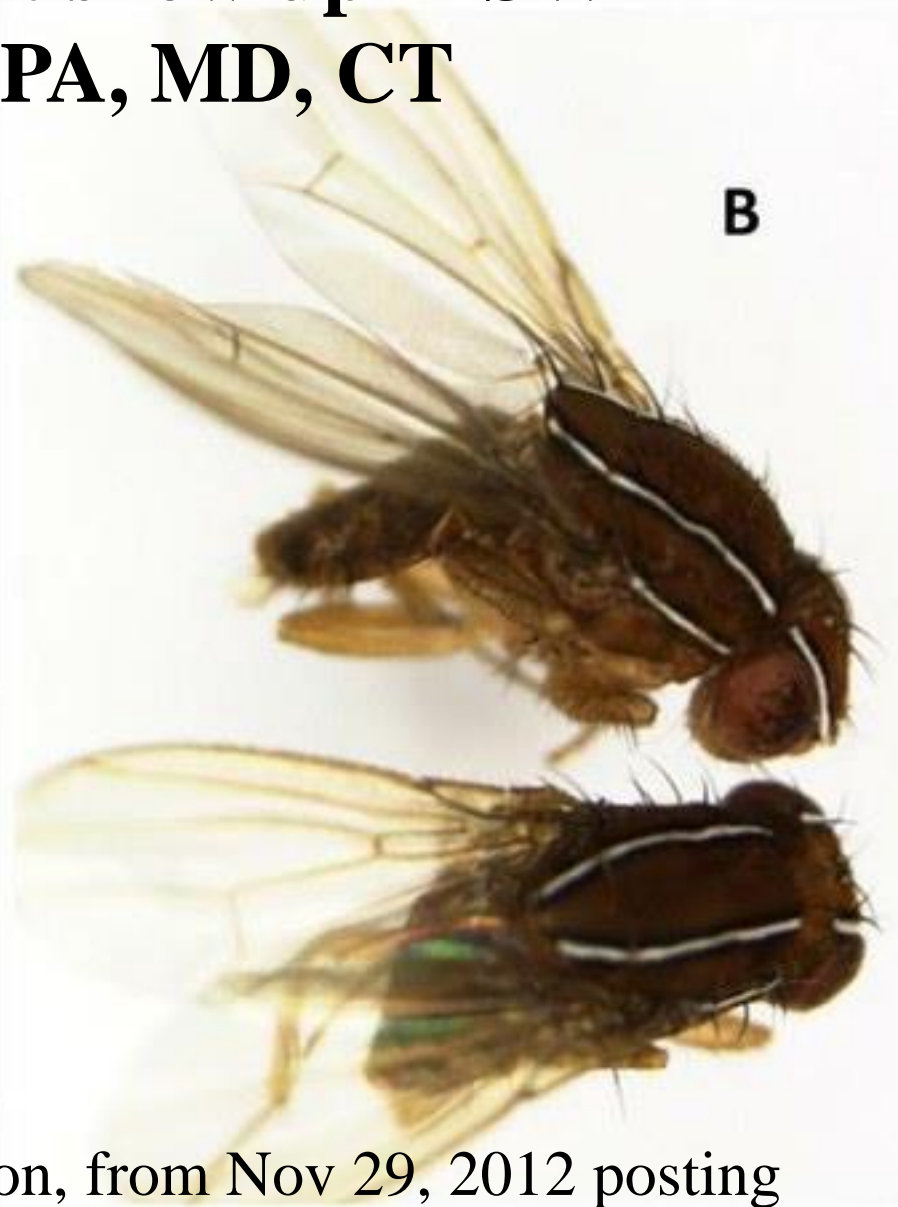


Image source: Used with permission, from Nov 29, 2012 posting of Farm Progress www.farmprogress.com

Magnifiers & Other Visual Aids for Insect Monitoring

Dr. Alan T. Eaton, Extension Specialist, Entomology

Ha
po
an
wo

http://extension.unh.edu/resources/files/Resource003343_Rep4814.pdf

I rest the hand holding the lens against my cheek bone, to ensure it stays close, and at a constant distance. Then, with my other hand holding the specimen, I bring the subject up to the lens. I usually touch my two hands together once I've found the correct distance between lens and subject. That keeps it there. at the





Questions, Discussion?