

# BRAINWAVE OPTIMIZATION

---

Bryn W. Perkins, PA, CBS



Brain.  
Balancing  
of Vermont

# Eastern View Integrative Medicine

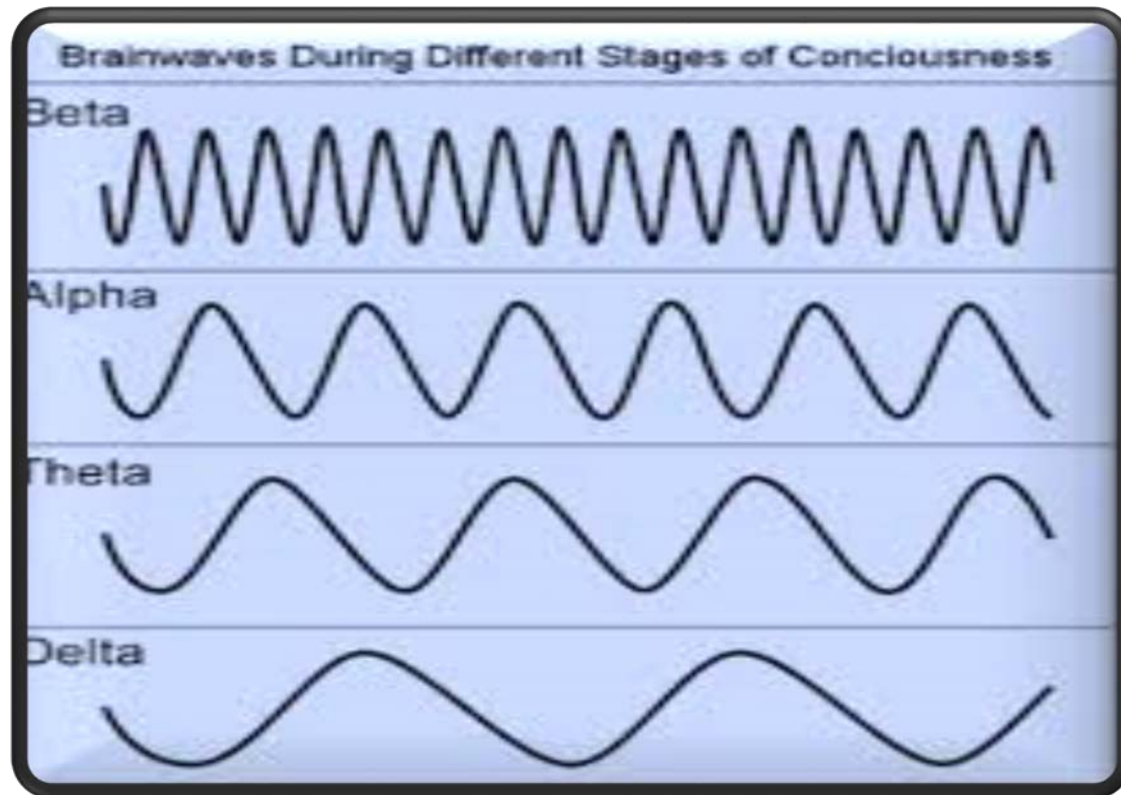


# The Master Control Center



# What are Brainwaves?

Rhythmic changes in the electrical activity of a group of neurons



# EVEN WITH REALLY GOOD DIET AND LIFESTYLE CHOICES...

---

our brains remain surprisingly susceptible to trauma

# The brain can be impacted by both

## Emotional trauma



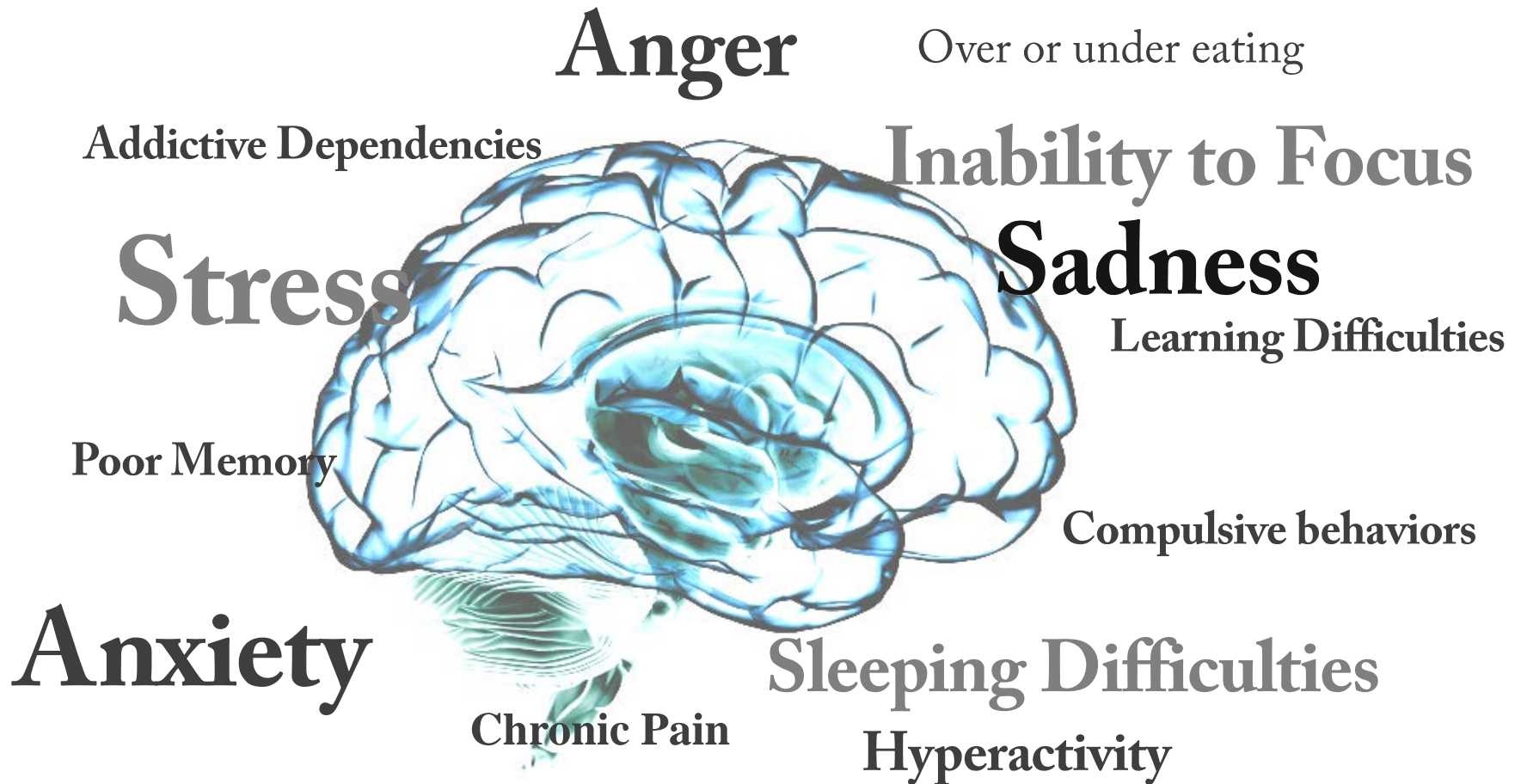
## Physical trauma



Changes can be subtle or dramatic, and can go unrecognized for years, decades or a lifetime.



# Brain 'Imbalances' may manifest as...





# BRAINWAVE OPTIMIZATION

---

A return to **balance** and **harmony**

# Brain State Technologies



- Lee Gerdes, Founder & CEO
- Background in math, physics, data patterning, clinical psychology, theology
- BST develops and licenses Brainwave Optimization technology
- 170+ licensed offices in 20 countries
- 70,000+ clients





# The Brainwave Optimization process

Brainwave Assessment Identifies Imbalances

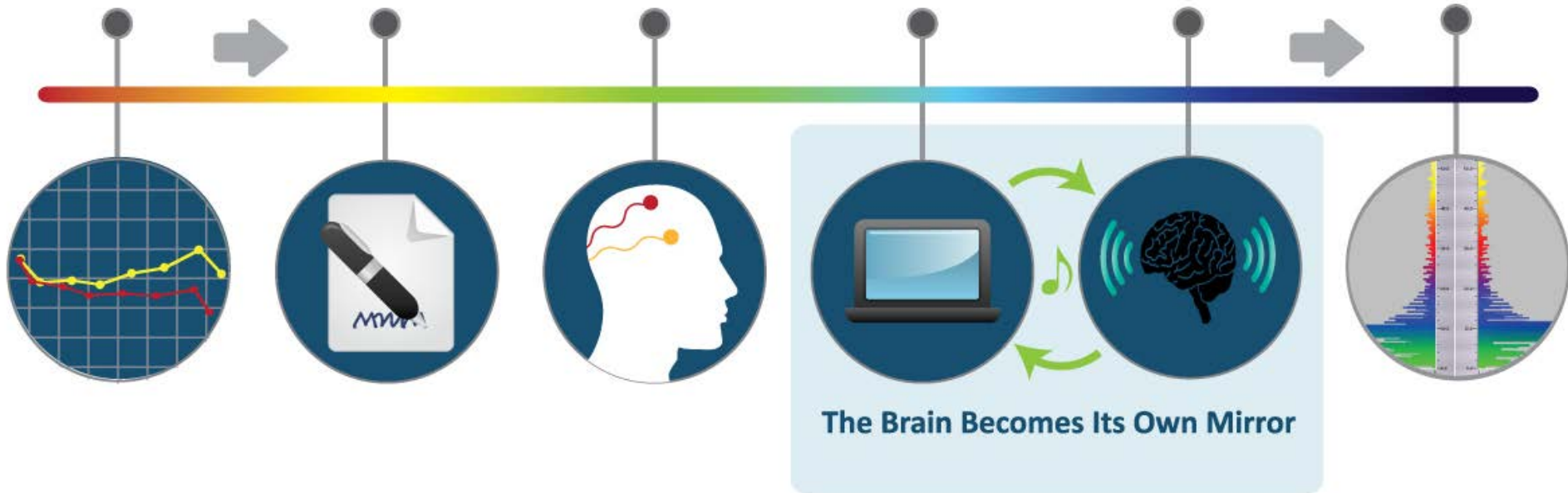
Select Initial Protocol

Noninvasive Read-Only Scalp Sensors Focus on Mid-Range Brain Frequencies

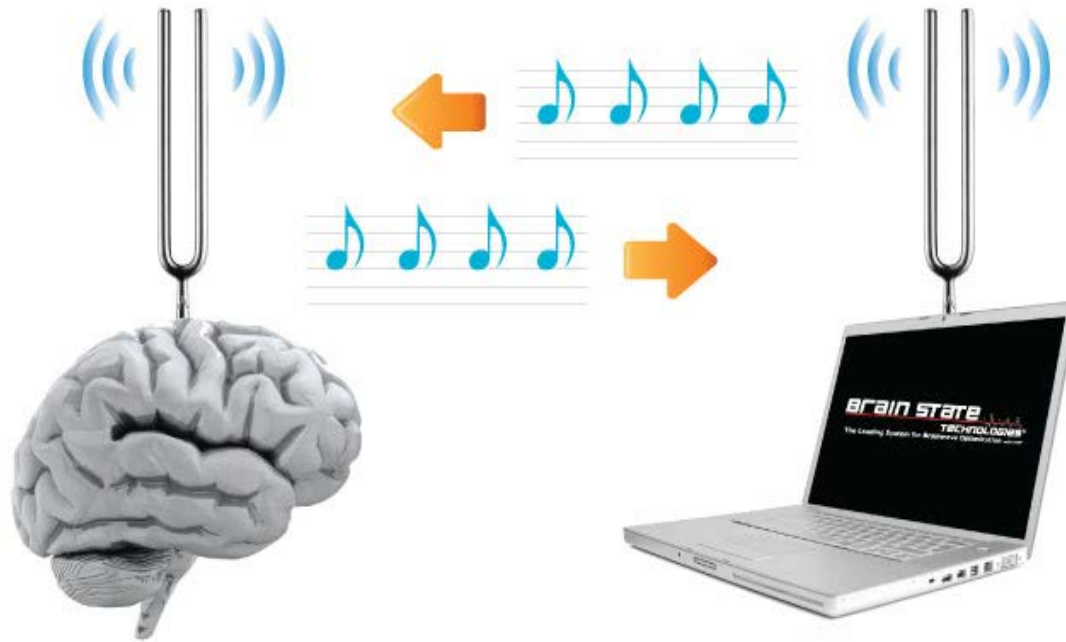
Software Translates Brain Frequencies into Sound Frequencies

Resonance with Sound Frequencies Facilitates Recalibration

Brain Self-Calibrates for Balanced Brainwaves

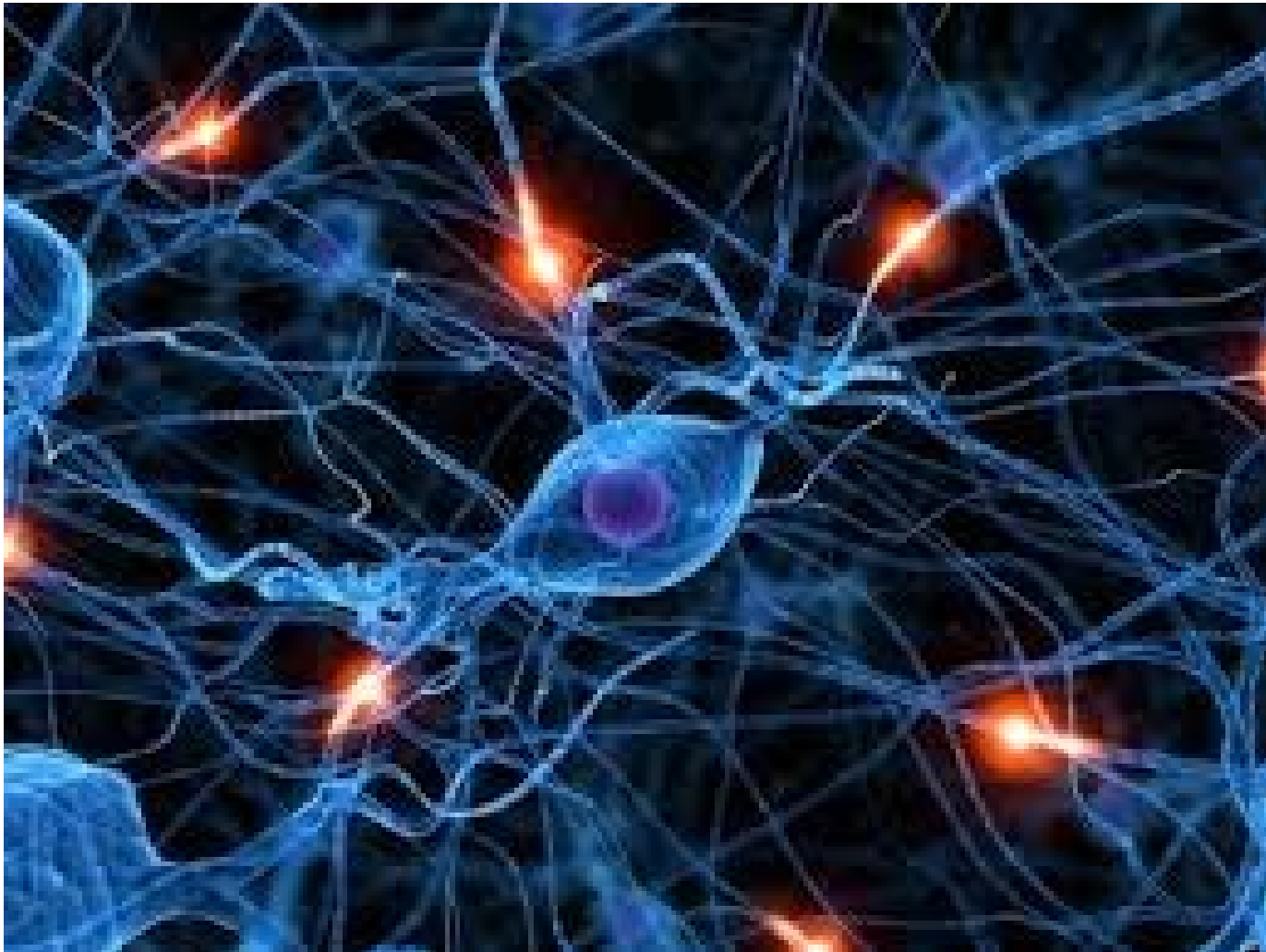


# How does BWO work?



Like a tuning fork, BWO works with *resonance*.

# Neuroplasticity



00:04:56

Mode: **Capture**

Device: Intellifier400

# Chnls: 2

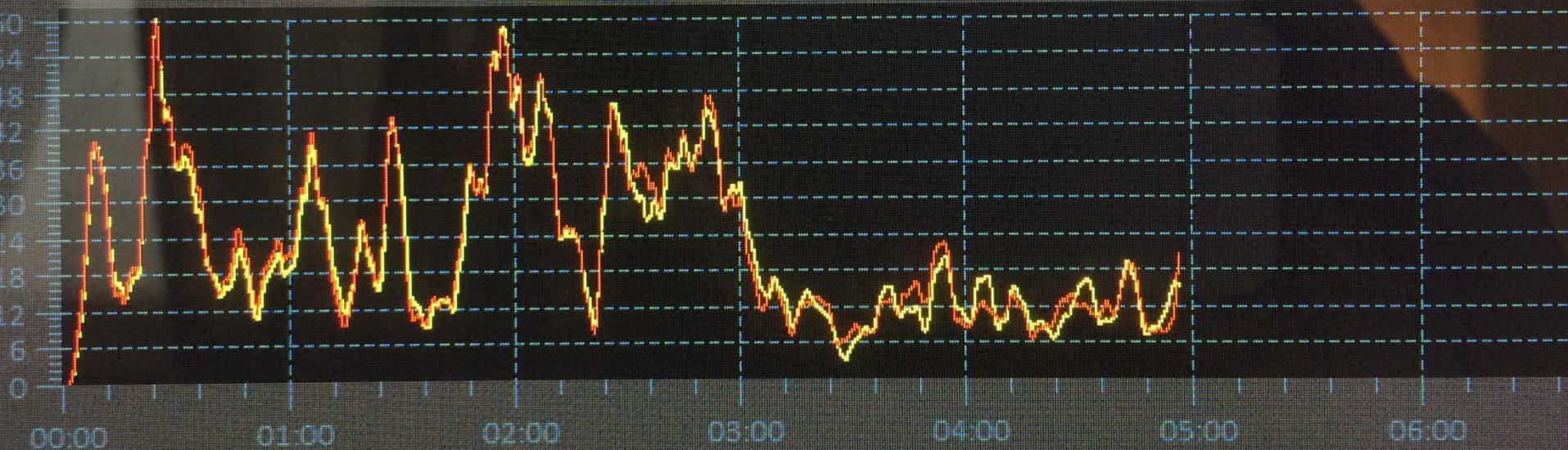
00:08:00

Status: **Running**

Ref Chnls: Link

Filter: 60 Hz

rend



Time: **00:10:51**

Mode: **Replay**

Device: Intellifier400

# Chnls: 2

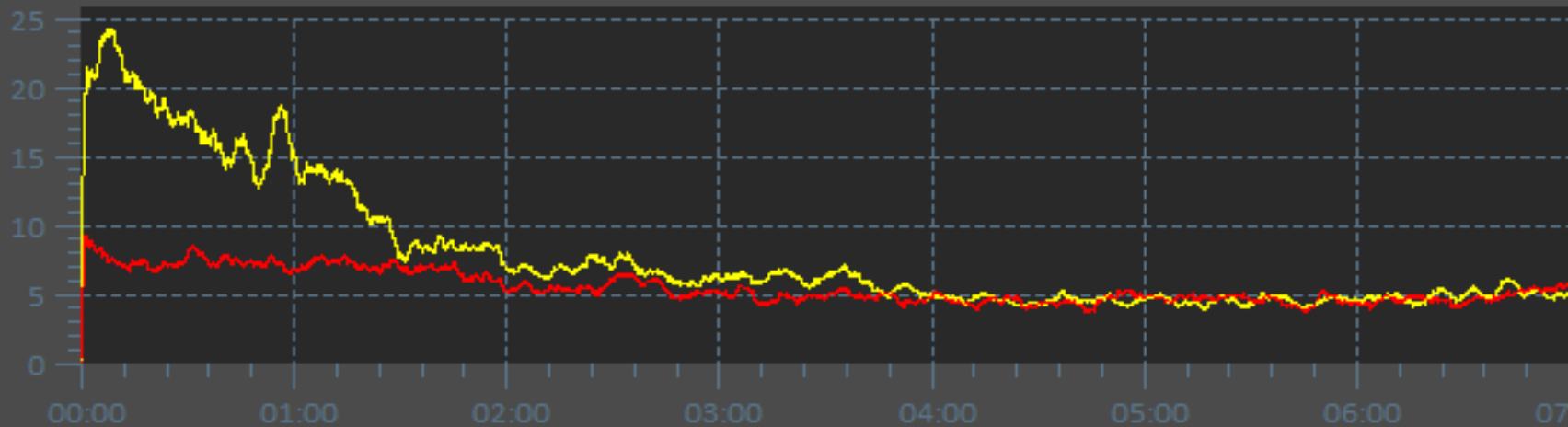
End: **00:10:51**

Status: **Completed**

Ref Chnls: Link

Filter: 60 Hz

### Trend



50Hz

0%

60Hz

0%

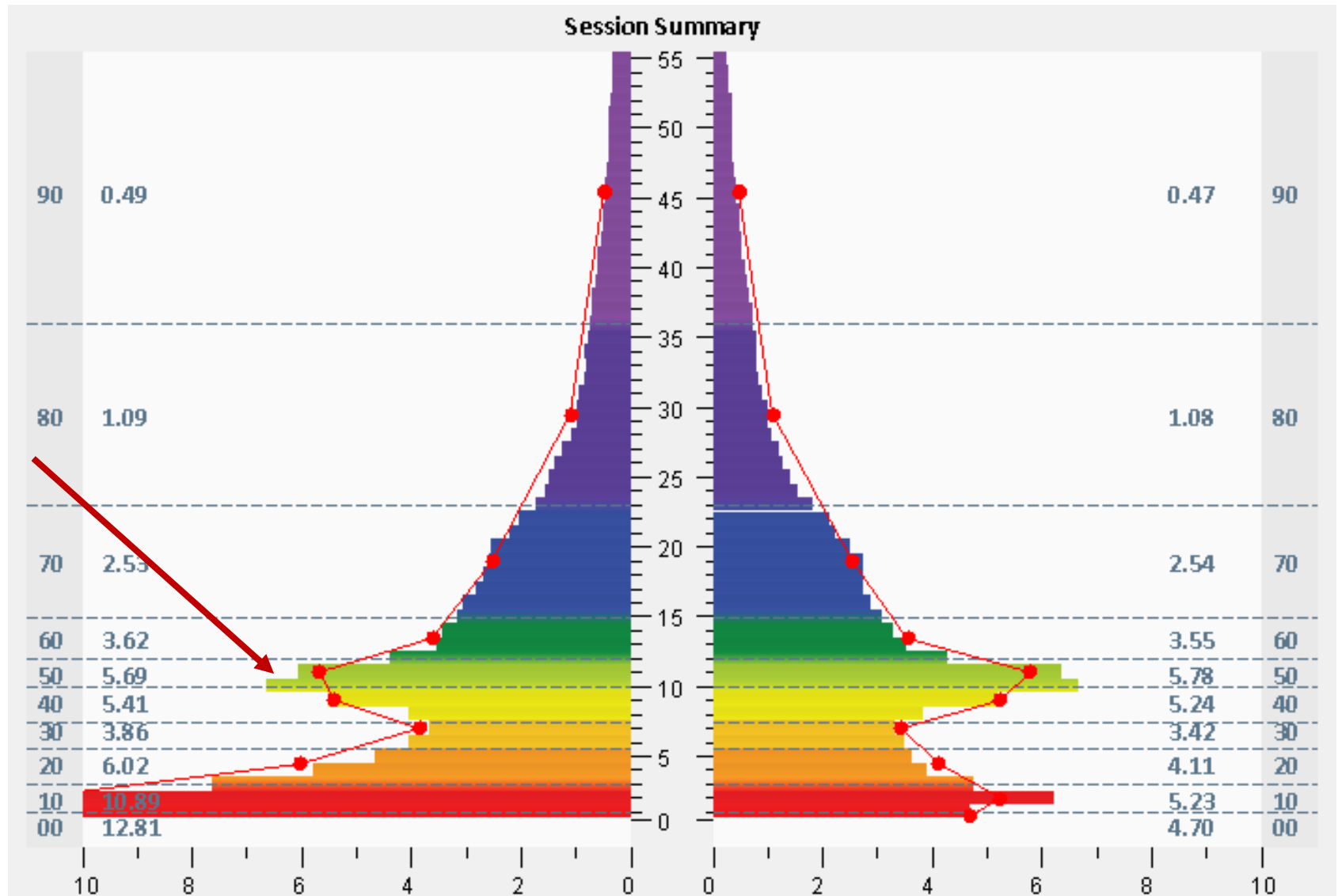


# “Melinda” – Unrecognized Trauma

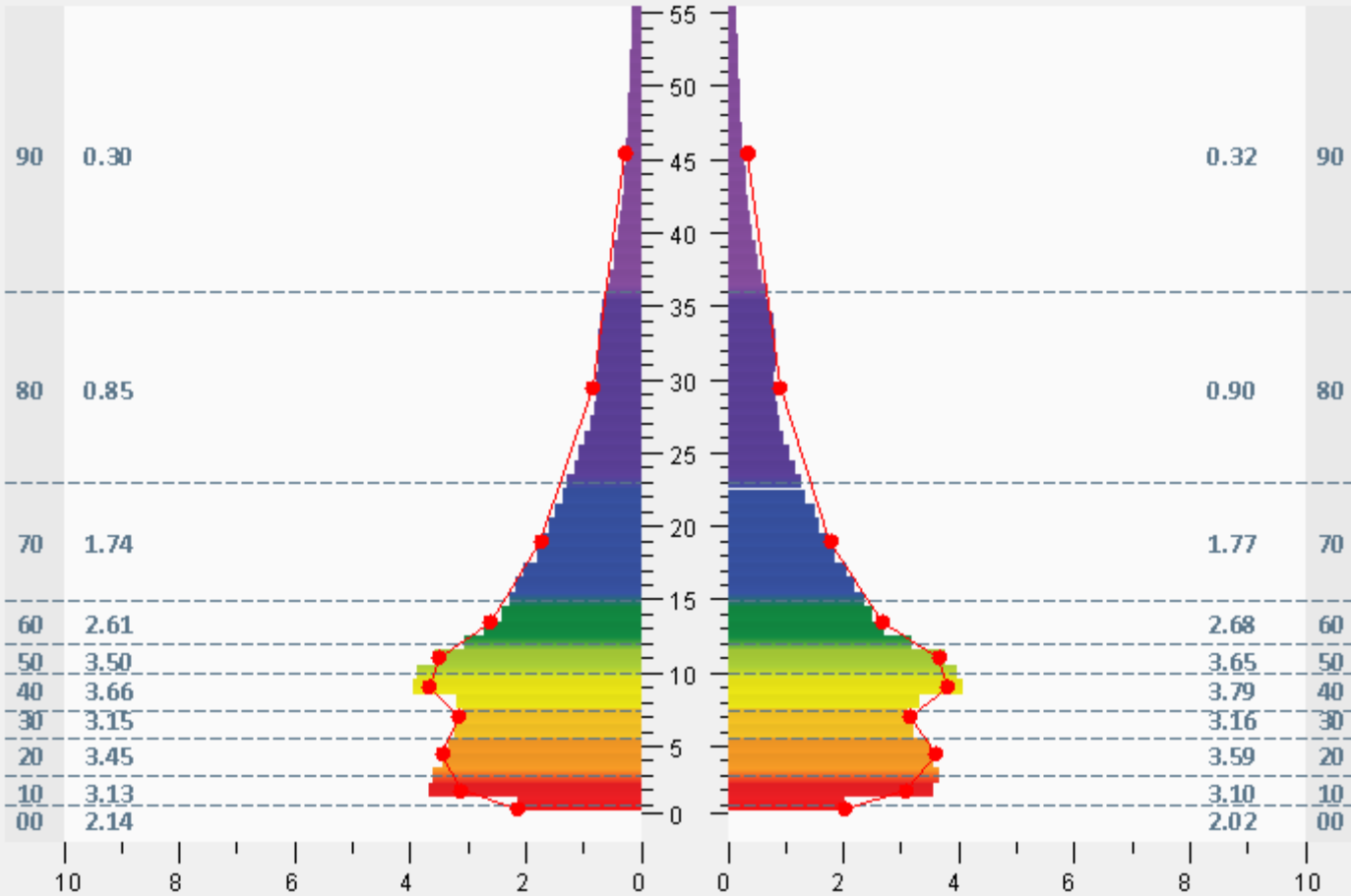
- Previously high performing 60 year old woman
- Chief Concerns:
  - Disordered thinking
  - Concentration and focus challenges
  - Difficulty making decisions
  - Irritability, agitation
  - Husband described inability “to follow through” with activities

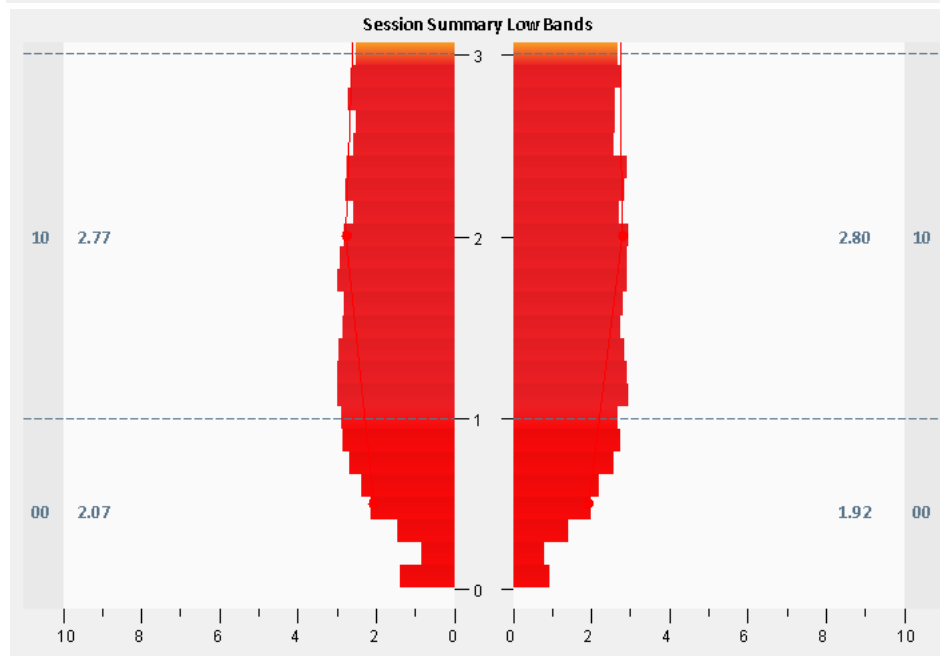
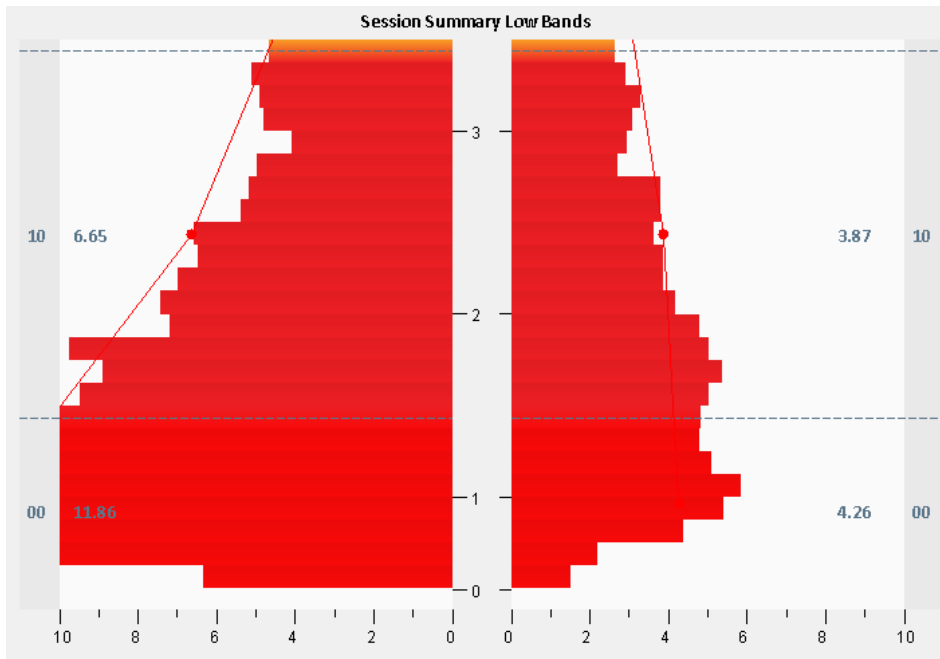
She reported 2 minor car accidents in previous 2 weeks

# Parietal Lobe Imbalance



### Session Summary



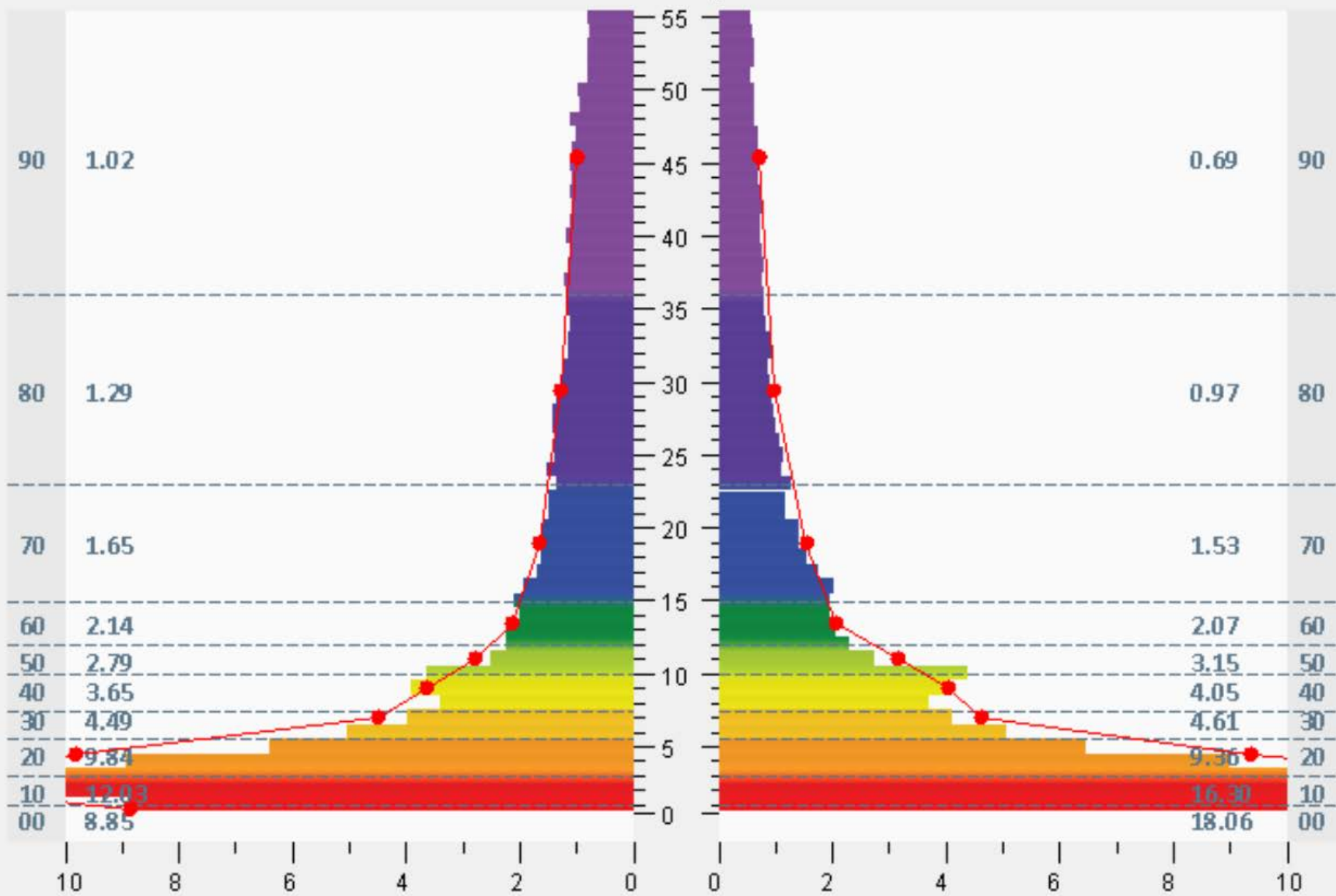


# George – Bicycle Accident

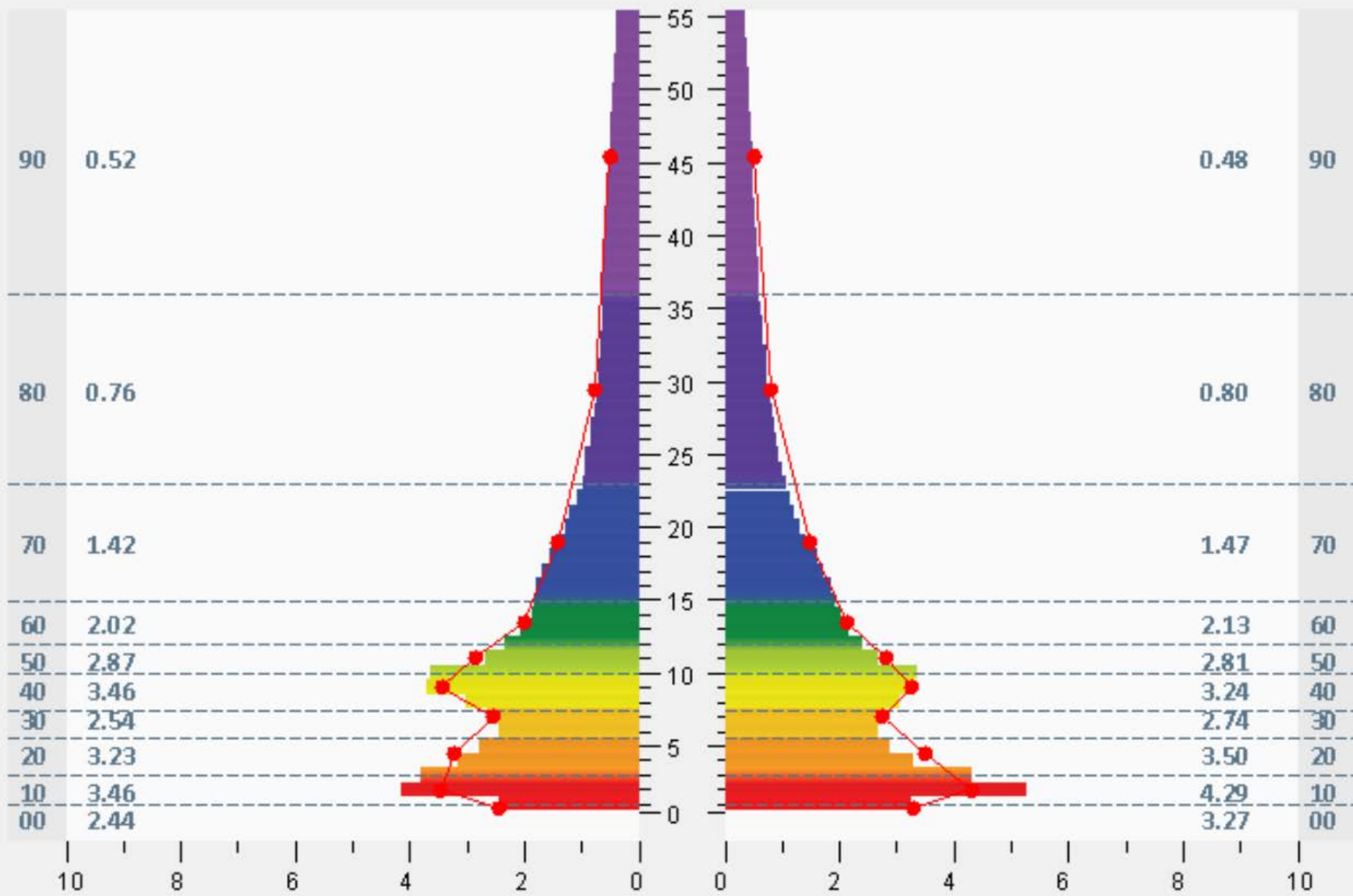
- 24 year old college graduate and athlete
- Chief Concern: inability to maintain focus  
Impossible to use computer or to work
- Goal: to return to work and to previous level of activity



### Session Summary Frontal

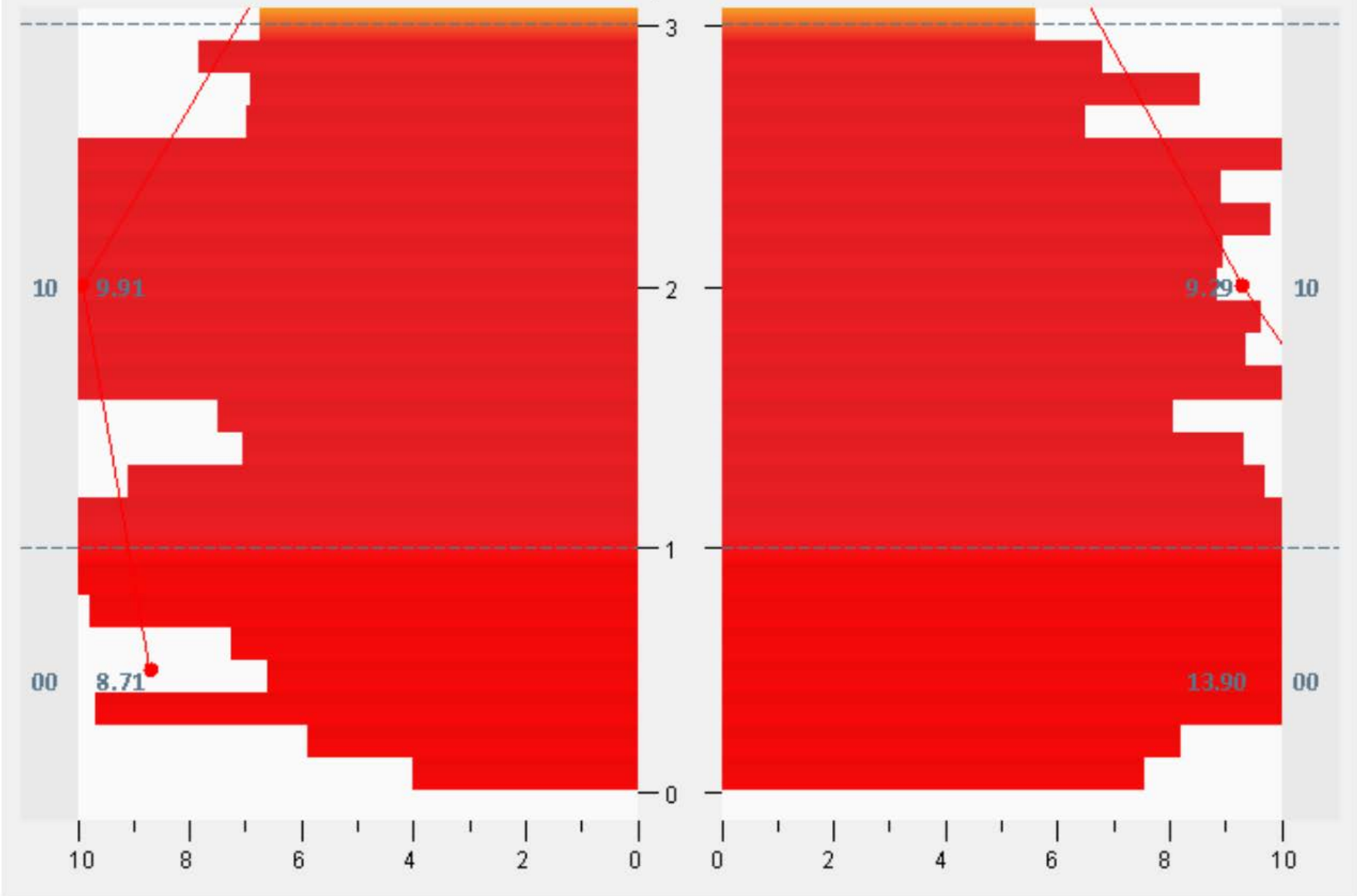


### Session Summary F3F4-412-EC



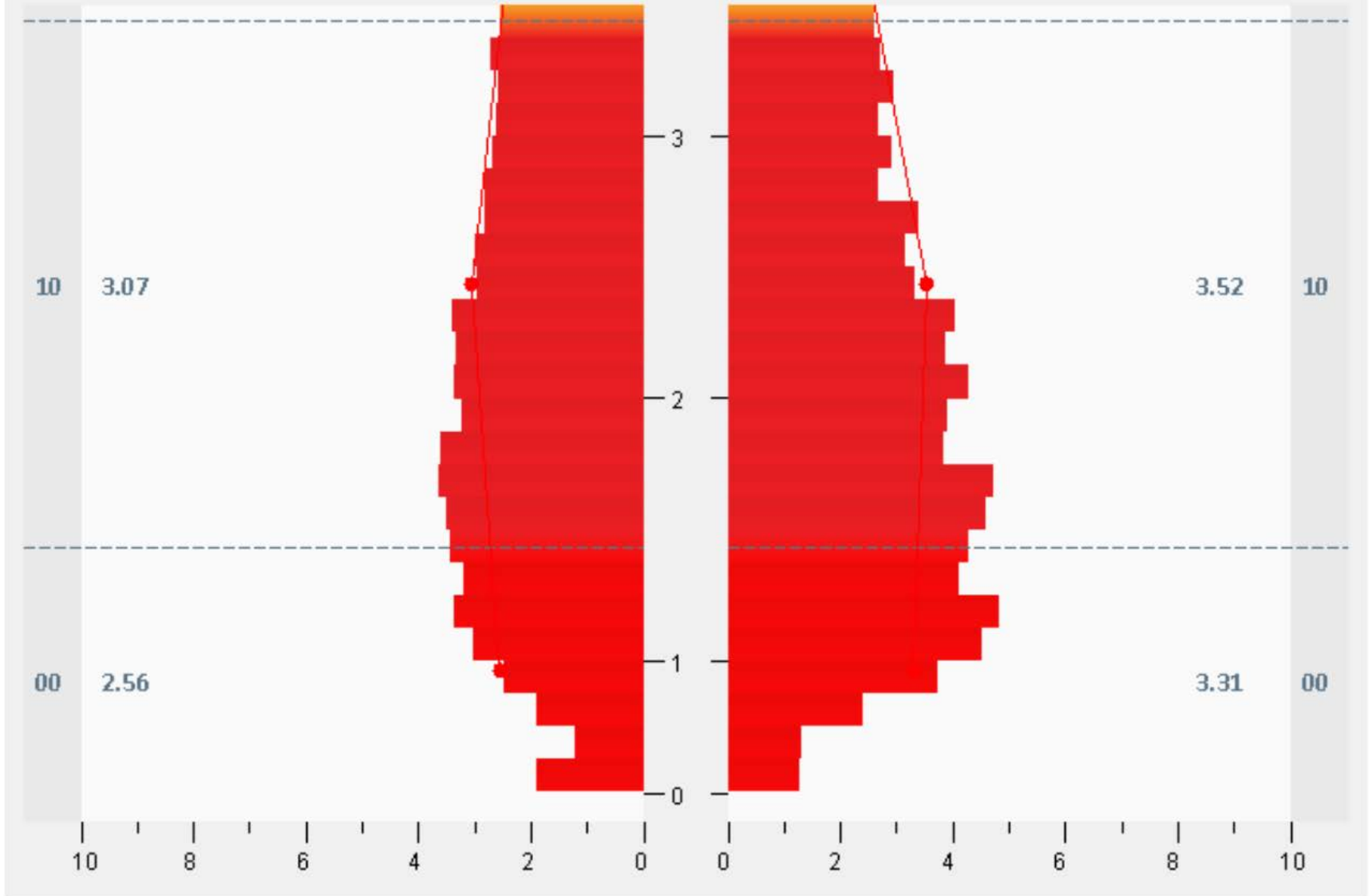
Share  
A link to  
clipboard

### Session Summary Low Bands Frontal





### Session Summary Low Bands



# Nick – Cumulative ‘low-grade’ injuries

23 year old College student who had dropped out  
Played Football throughout high school

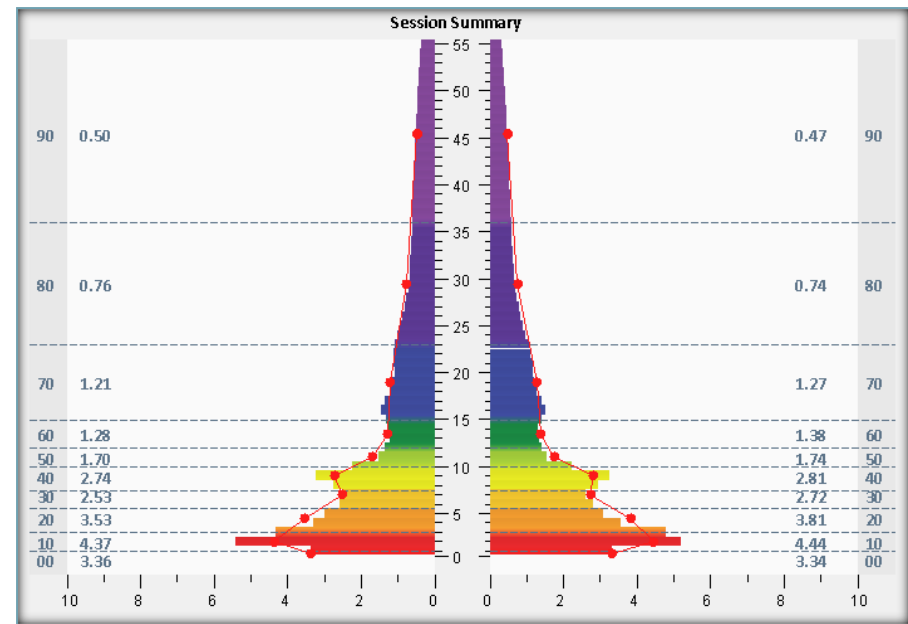
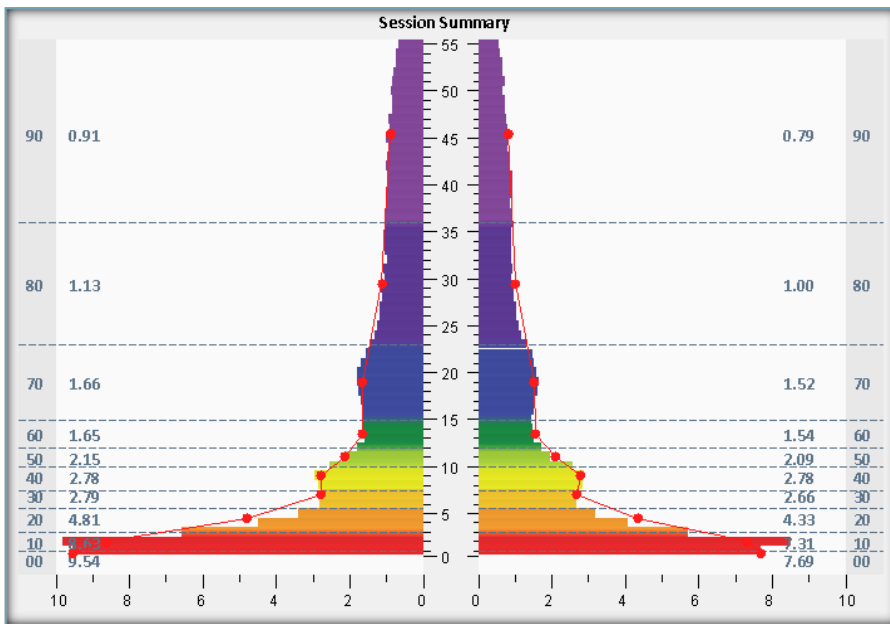


Chief Concern: Lacked motivation to return to school

# Low Frequency Imbalances

Pre

Post

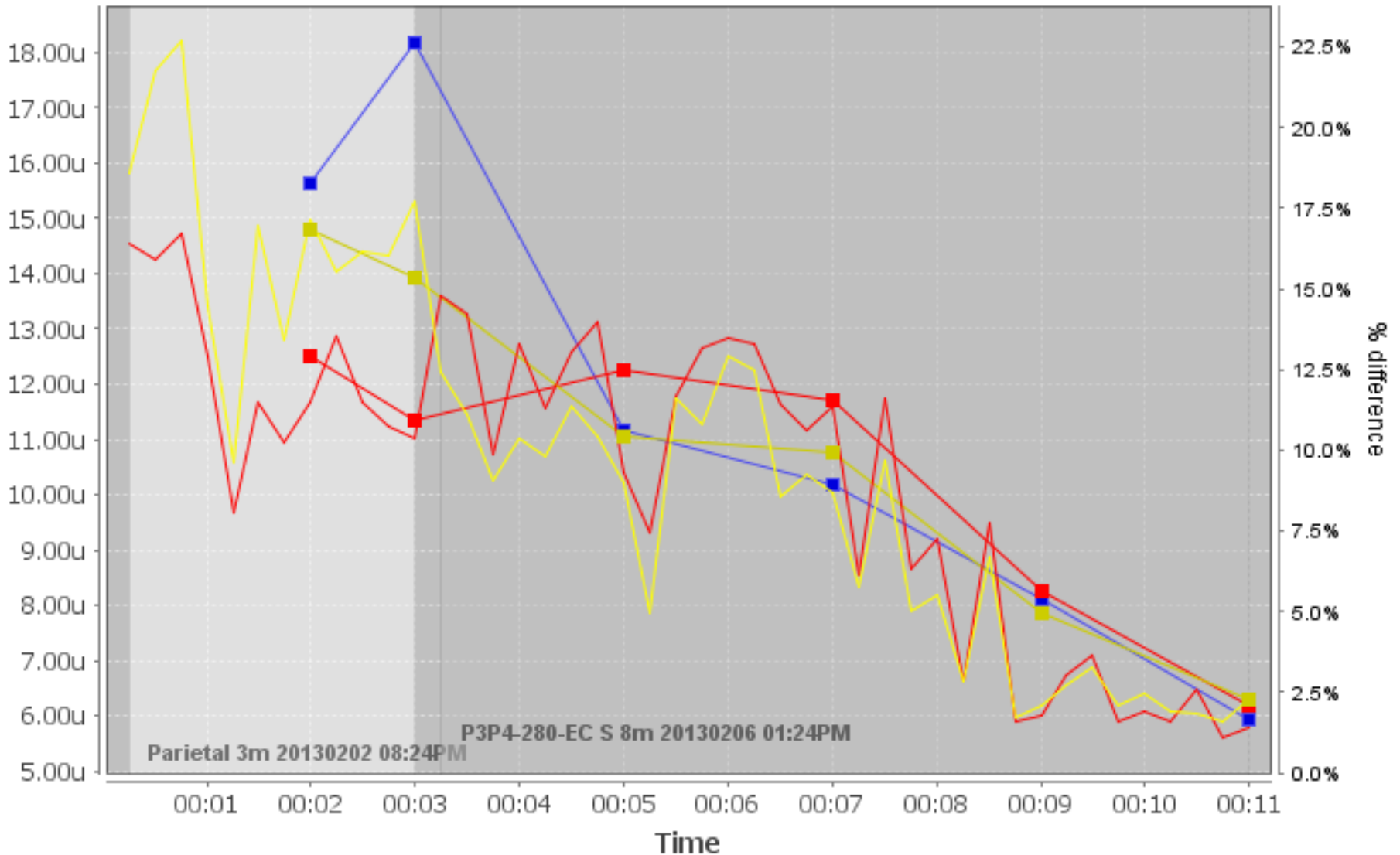




# Stacy

- 32 year old working mother with young child
- Seizures – 3 to 6 rolling **simple partial seizures**
- Had tried:  
brain surgery 12 years prior  
acupuncture  
nutrition and herbs  
long term Rx (Kepra)

# 80 Active Cognitive Function (23.0-36.0)

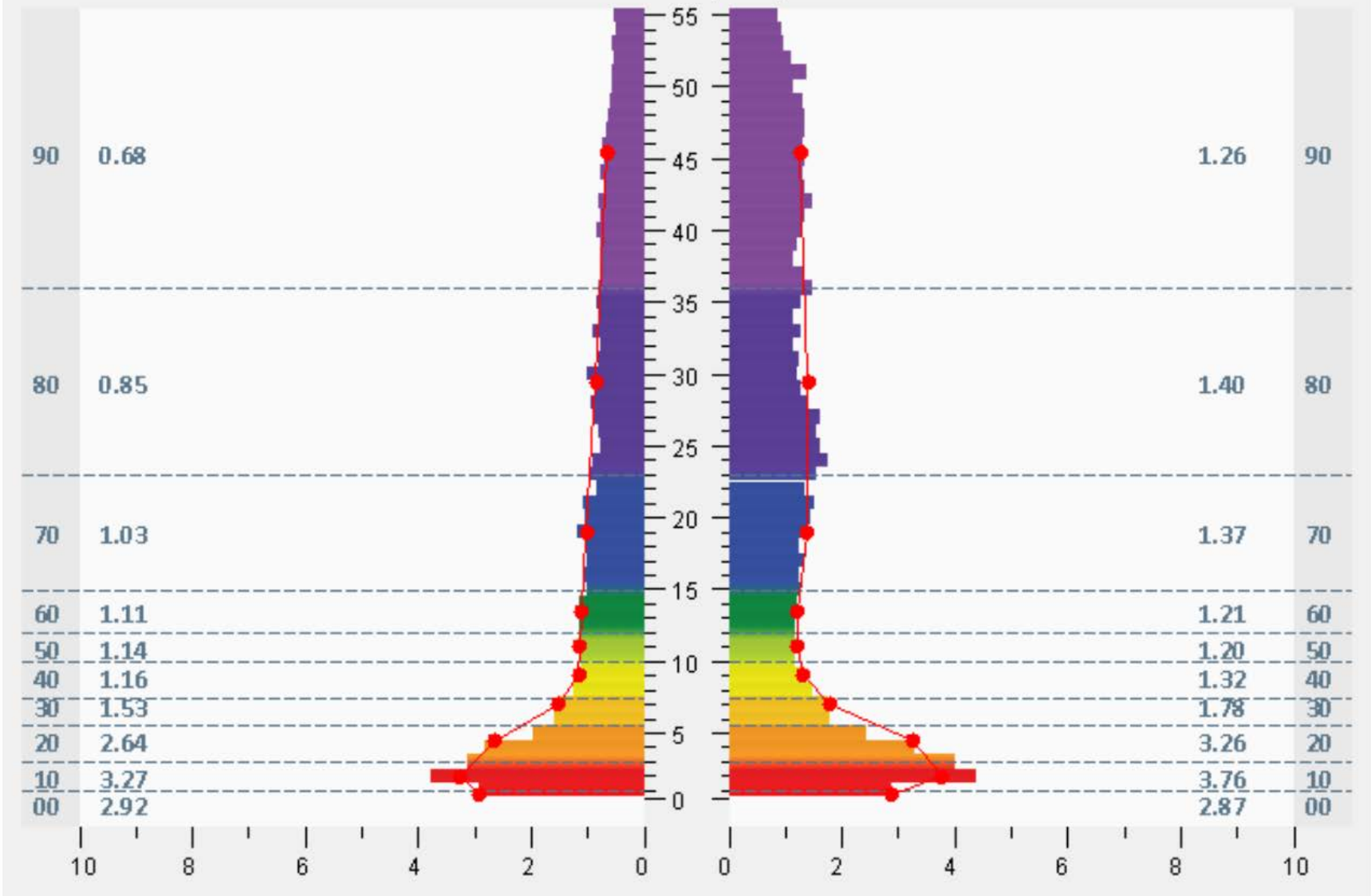


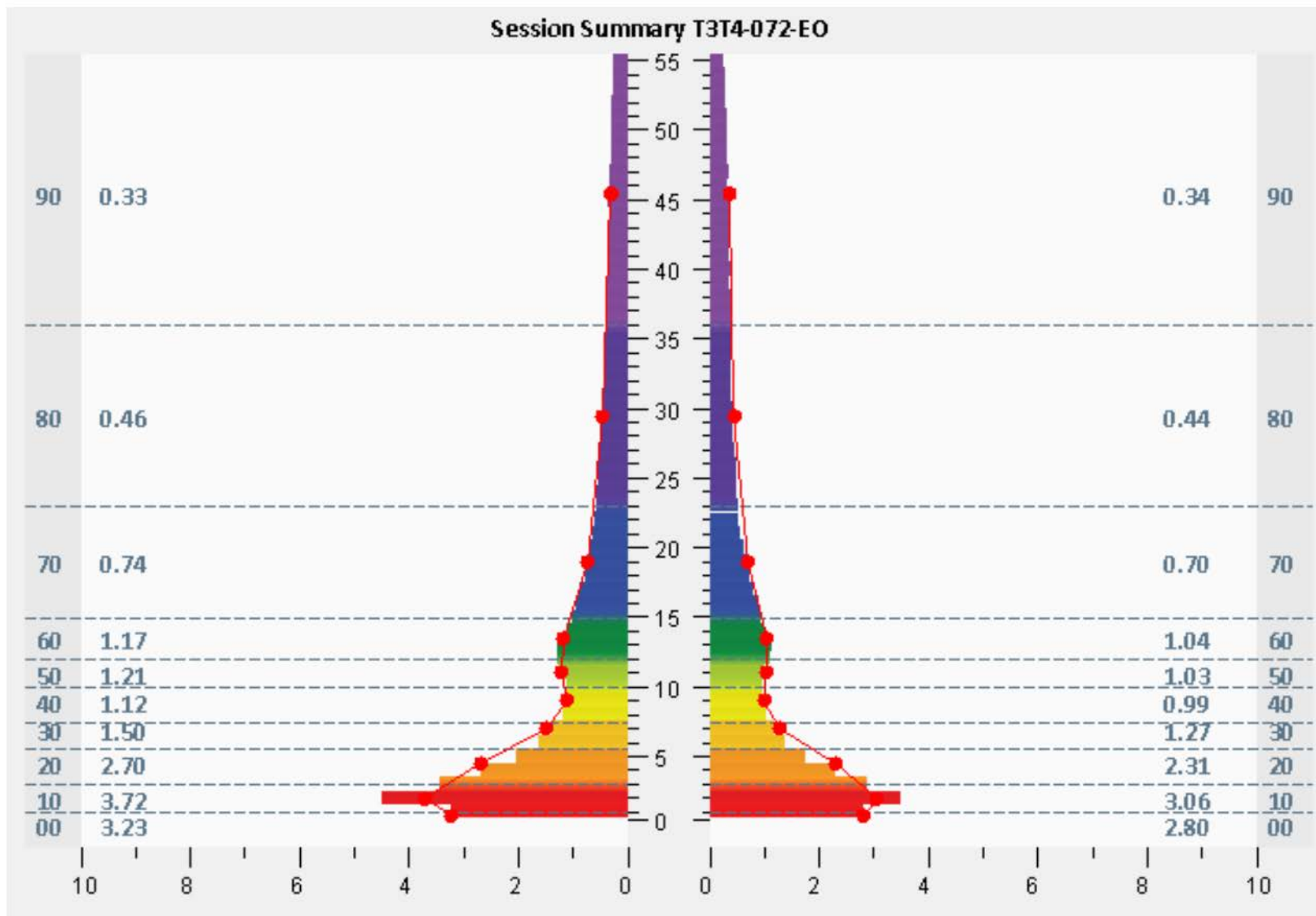
— Left — Right — Left trend — Right trend — Trend % Difference

# ANXIETY and Fainting

- 26 year old woman
- Chief Concern: Fainting at Doctor's office
- Anxiety even thinking about going to the doctor
- History of falling out of tree as child

### Session Summary Temporal

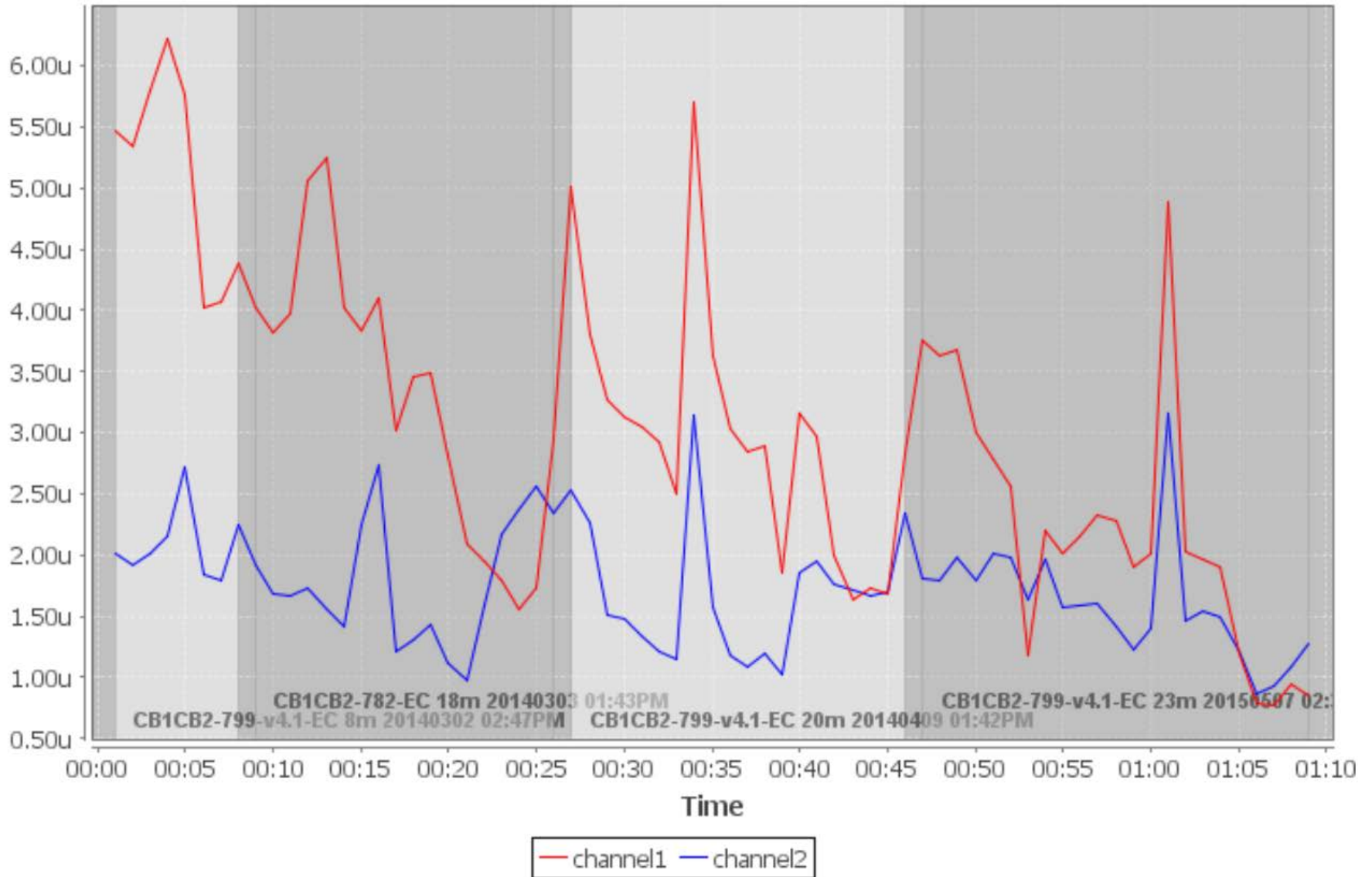






What happens after the series?

# 90



# A common thread with brain trauma

Each of these patients felt they had **exhausted all avenues.**

**Their** doctors offered only pharmaceuticals and **rest.**



Thank you for being here today!



Questions?