

# Morristown, Vermont

## Community Data Profile

Morristown Community Visit  
March 29, 2011

What follows is a collection of indicators and information on the town of Morristown and its residents. **These data are meant to help inform the March 2011 Morristown Community Visit by the Vermont Council on Rural Development**, but they certainly have many other uses.

Most of these indicators have been produced by the US Census Bureau. Sources also include the Vermont Departments of Taxes and Labor, among others.

Readers may note that some of the data for Morristown was most recently collected in 2000 as part of the 2000 Census. Alas, **the vast majority of new data from the 2010 Census has yet to be released**. We have included the most recent data available. More town-level data from the 2010 Census is expected in May and June of 2011.

**The UVM Center for Rural Studies engages in many projects to assist Vermonters in accessing and using community-level data for their towns, cities and villages.** We encourage all Vermonters to familiarize themselves with some of the most common online sources of this data.

Vermonters will find community profiles with data from assorted sources at:

- **Vermont Indicators Online** – <http://crs.uvm.edu/indicators> and
- **Vermont Housing Data** – [www.housingdata.org](http://www.housingdata.org)

Direct access to many of the agencies that produce the indicators can also be found at:

- the US Census Bureau's American FactFinder – <http://factfinder.census.gov>
- the Vermont Dept. of Labor's Covered Employment & Wages report – [www.vtlmi.info/indnaics.htm](http://www.vtlmi.info/indnaics.htm)
- the Vermont Dept. of Labor's Labor Force & Unemployment site – [www.vtlmi.info/labforce.cfm](http://www.vtlmi.info/labforce.cfm)
- the Vermont Dept. of Taxes' statistics site – [www.state.vt.us/tax/statistics.shtml](http://www.state.vt.us/tax/statistics.shtml)
- the Local Employment Dynamics site – <http://lehd.did.census.gov/led/datatools/onthemap4.html>
- the Vermont Crime Information Center – [www.dps.state.vt.us/cjs/crimestats.htm](http://www.dps.state.vt.us/cjs/crimestats.htm) and
- the USDA's Census of Agriculture – [www.agcensus.usda.gov](http://www.agcensus.usda.gov)

Enjoy!



[uvm.edu/crs](http://uvm.edu/crs)  
802-656-3021

The Center for Rural Studies at the University of Vermont is a nonprofit, fee-for-service research and resource center that works with people and communities to address social, economic, and resource-based challenges. A part of the University's College of Agriculture and Life Sciences since 1978, CRS supports the research and teaching missions of the university through its work in applied research, community outreach, program evaluation, and consulting services. CRS is also the US Census Bureau's State Data Center for Vermont.

## Table of Contents

Civics .....	1
Population Demographics.....	1
Housing .....	4
Income & Poverty .....	6
Source: US Census Bureau, 2005-2009 American Community Survey .....	7
Employment and Labor Force.....	8
Education .....	11
Agriculture .....	12

# Civics

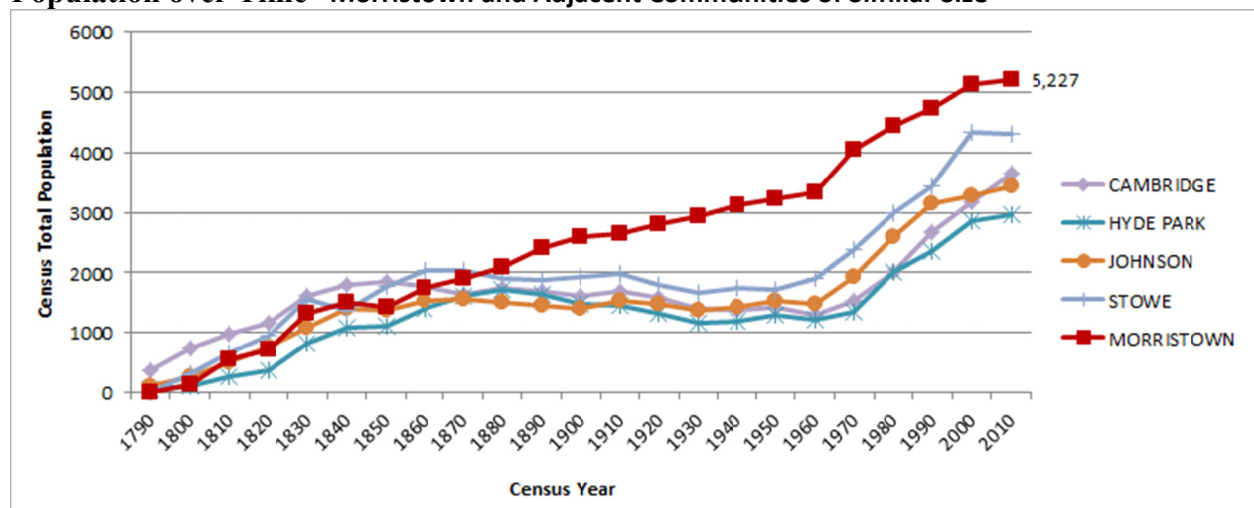
<b>Morristown Civic Stats</b>	
Year Town Incorporated or Chartered	1781
Type of Entity	Municipality - Town
County	Lamoille County
Regional Planning Commission	Lamoille County Planning Commission
Incorporated Villages	Morrisville
Municipal Plan	Yes
...approved by Regional Planning Commission	Yes
Zoning Ordinance	Yes
Subdivision Ordinance	Yes
Development Review Board	Yes
Development Category	Traditional Center

Sources: Various, including 2010 town planning survey by the VT Dept. of Housing and Community Affairs.

## Population Demographics

Morristown’s population curve is typical of a traditional center. This is characterized by steady growth through history. However, unlike other traditional centers in Vermont, Morristown’s population has not plateaued or declined in recent decades. According to the U.S. Census Bureau, the town posted 1.7% growth between 2000 and 2010. Morristown’s status as the largest municipality in Lamoille County will likely continue for decades to come.

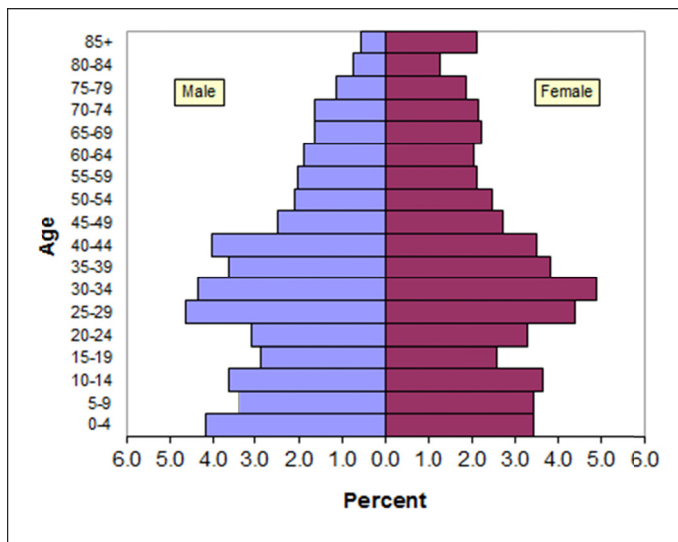
### Population over Time - Morristown and Adjacent Communities of Similar Size



Source: US Census Bureau, Census of Population and Housing.

## Population Pyramids

Morristown 1990

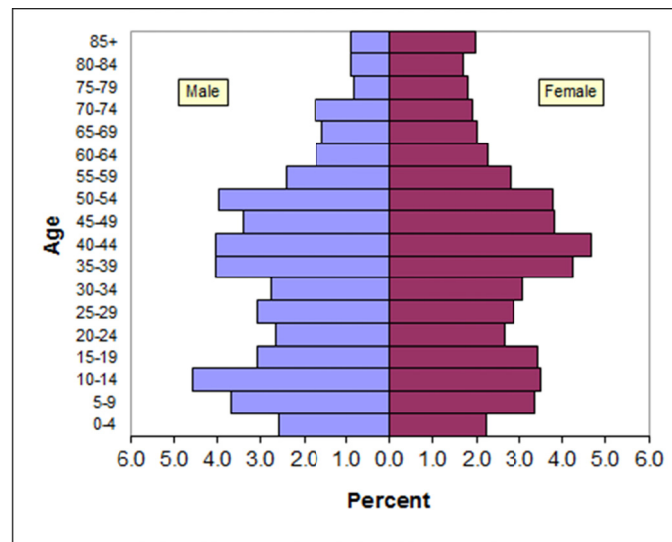


Source: US Census Bureau, Census of Population and Housing

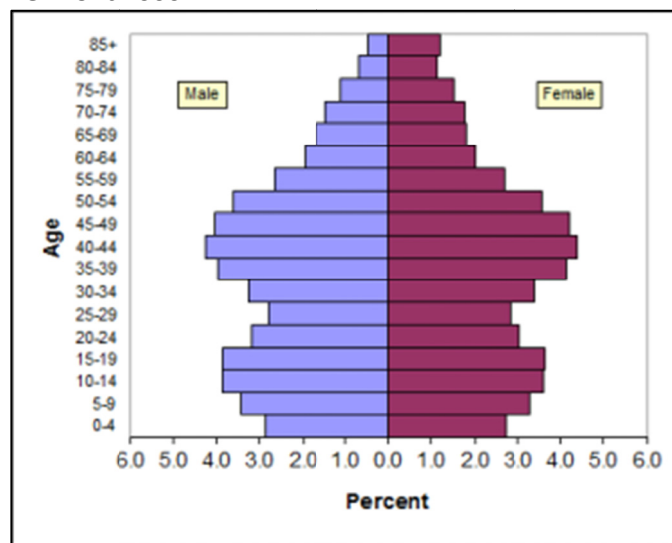
Morristown’s population pyramid is typical of a town in Vermont. One can see the “Baby Boom Bulge,” which is roughly the 35-54 age groups in both Morristown and Vermont in 2000. Morristown’s pyramid is not as “smooth” as Vermont’s with more valleys and crests along the major curves, but this sort of variation is normal when profiling a small population.

Overall, Morristown seems to be subject to the same overarching demographic trends associated with the Baby Boom and an aging population as the rest of the state.

Morristown 2000



Vermont 2000



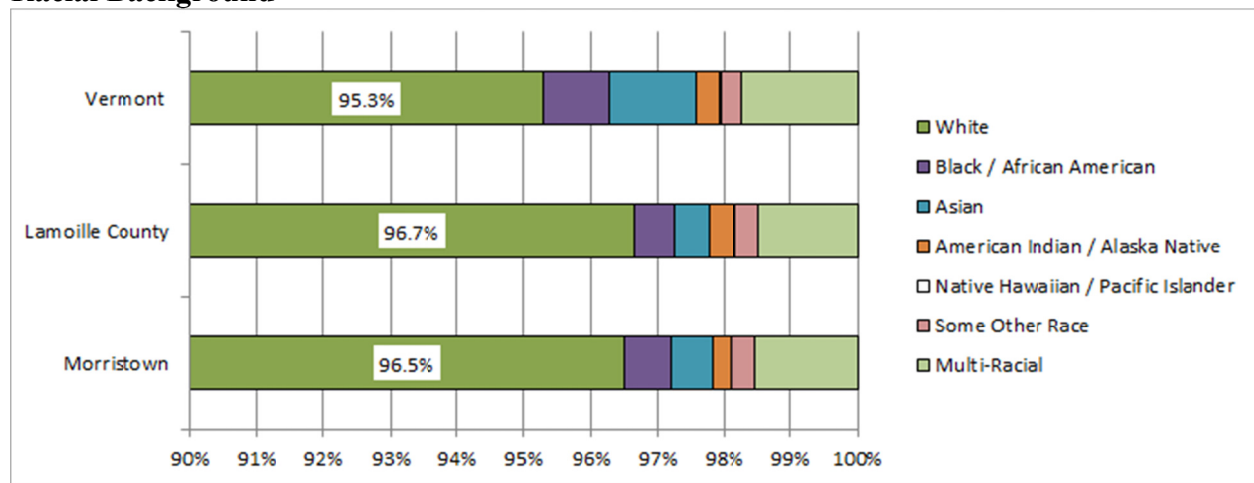
## Median Age

	Census 2000	ACS 2005-2009 Estimate
Morristown	39.0	42.7 ±2.3
Lamoille County	36.5	39.4 ±0.8
Vermont	37.7	40.6 ±0.1

Source: US Census Bureau, 2000 Census and 2005-2009 American Community Survey

Looking at median age, Census data and the more recent American Community Survey estimates show that Morristown tends to be older than the county and the state. The different between Morristown and the county can probably be attributed to the amount of elderly housing options in Morristown and the college student population in Johnson, which is skewing the county's number downward.

## Racial Background



\*Note that this table begins at 90%

Source: US Census Bureau, 2010 Census

Morristown's racial background does not stand out from the county's in 2010. Those who claimed white race alone represent a vast majority. Vermont has higher proportions of other races than the town and county, most likely as a result of much more diverse areas of the state, like Chittenden County.

## Hispanic Origin

In addition, 1.4% of Morristown residents (of any race) claimed Hispanic or Latino origin in 2010, which nearly matches the county rate of 1.3% and the state rate of 1.5%.

## Native Vermonters

In 2000 67.7% of Morristown residents were native to Vermont, compared to 57.9% in the county and 54.3% in the state.

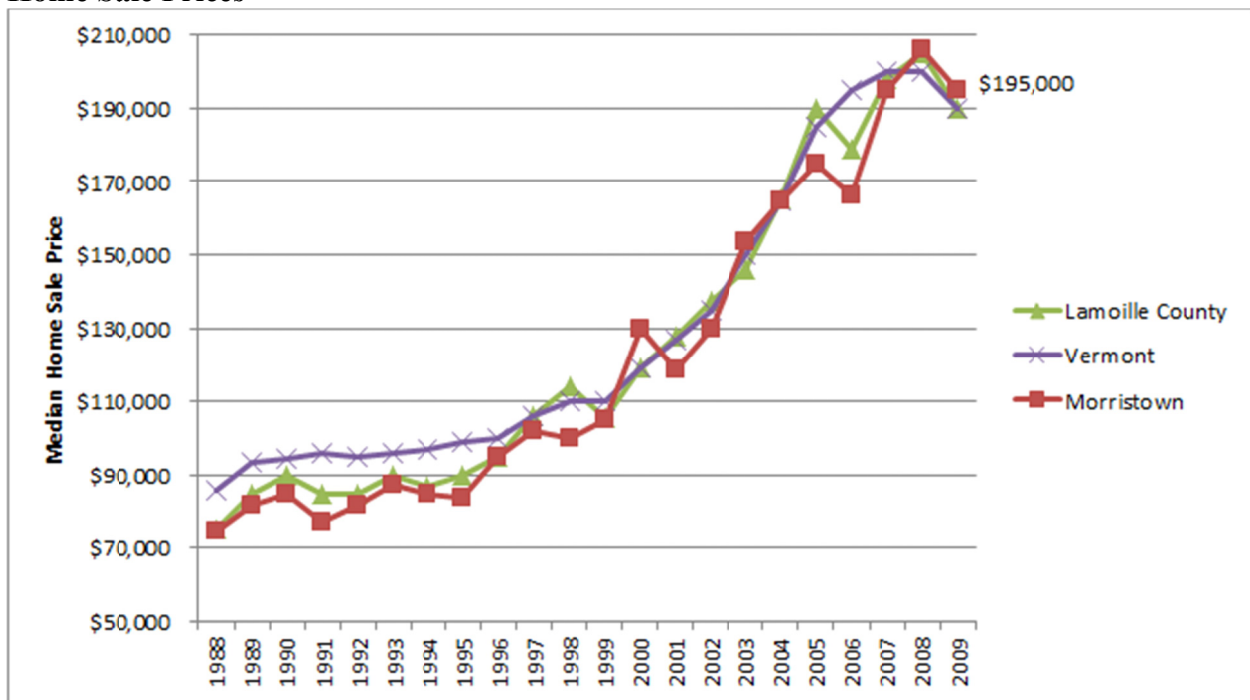
# Housing

Morristown had a higher proportion of rental units and a lower proportion of seasonal units than the county and state in 2000. The town's housing prices have been tracking with the county and state, albeit a bit higher over the past two years.

Morristown Housing Statistics, 2000 Census	Morristown	Lamoille Co	Vermont
Total Housing Units	2,271	11,009	294,382
...Owner Occupied	1,336	6,534	169,784
<i>Owner occupied as percent of all housing</i>	58.8%	59.4%	57.7%
...Renter Occupied	765	2,687	70,850
<i>Renter occupied as a percent of all housing</i>	33.7%	24.4%	24.1%
...Vacant (not seasonal, recreational)	69	357	10,688
<i>Vacant (not seasonal/rec.) as a percent of all housing</i>	3.0%	3.2%	3.6%
...for Seasonal, Recreational, or Occasional Use	101	1,431	43,060
<i>Seasonal/recreational as a percent of all housing</i>	4.4%	13.0%	14.6%

Source: US Census Bureau, 2000 Census

## Home Sale Prices



Source: Vermont Dept. of Taxes, calculated by Vermont Housing Finance Agency

Note: Numbers are NOT adjusted for inflation

## Housing Costs, 2005-2009 Combined Estimates

	Morristown		Lamoille County		Vermont	
	Estimate	MOE	Estimate	MOE	Estimate	MOE
Homeowner Households with a Mortgage	884	±146	4,546	±273	120,420	±1,251
... median monthly housing costs	\$1,466	±\$108	\$1,393	±\$57	\$1,442	±\$12
... percentage of households with housing costs at or above 30% of household income	48.2	±14.2	39.0	±4.7	37.2	±0.9
Homeowner Households without a Mortgage	510	±113	2,502	±210	59,290	±1,113
... median monthly housing costs	\$587	±\$71	\$554	±\$36	\$563	±\$5
... percentage of households with housing costs at or above 30% of household income	34.0	±13.2	31.9	±5.5	23.1	±1.0
Renter Households	874	±160	2,806	±324	70,665	±1,204
... median monthly housing costs	\$879	±\$137	\$853	±\$59	\$781	±\$9
... percentage of households with housing costs at or above 30% of household income	46.5	±12.9	52.4	±7.3	51.0	±1.4

Source: US Census Bureau, 2005-2009 American Community Survey

Note: MOE = Margin of Error

Morristown's housing costs tended to be higher than the county's and state's within the period of 2005-2009. However discrete comparisons are hampered by the large margins of error.

# Income & Poverty

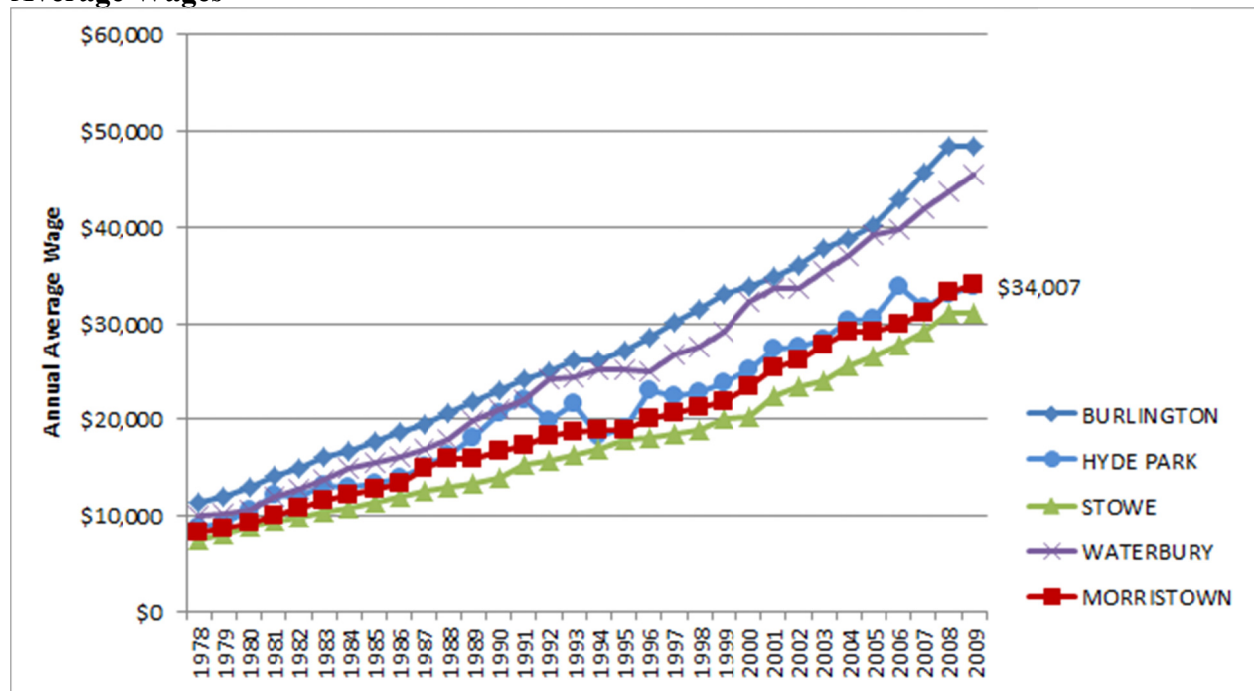
Incomes earned by households in Morristown have increased compared to the last round of Census data, when adjusted for inflation. The town seems to be doing much better than the county and state. Lamoille County’s income numbers are within the margins of error, while Vermont seems to be experiencing a decline in adjusted income since 1999.

## Median Household Income

	1999	1999 Adjusted for Inflation	2005-2009	2005-2009 MOE
Morristown	33,359	42,958	52,389	±4,697
Lamoille County	39,356	50,680	51,037	±2,260
Vermont	40,856	52,612	51,284	±467

Sources: U.S. Census Bureau, 2000 Census of Population and Housing and 2005-2009 American Community Survey  
 Note: These data reflect gross income from all sources.

## Average Wages



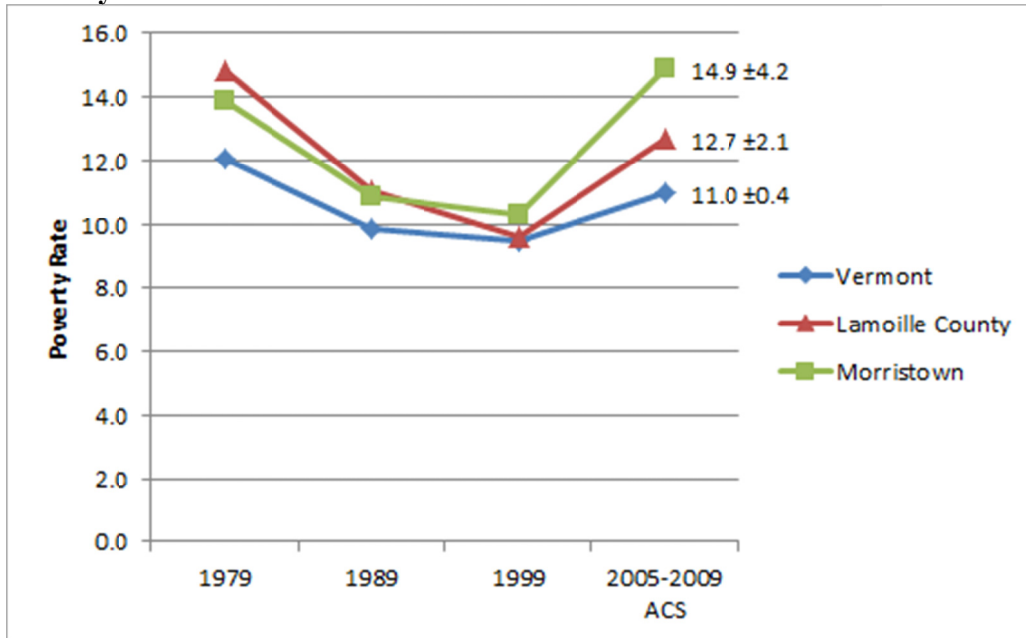
Source: Vermont Dept. of Labor

Notes: These are the average wages paid by employers in the given locations – e.g. not all Morristown residents earn Morristown wages. These numbers are LIMITED to employers that pay Unemployment Insurance. The numbers are NOT adjusted for inflation.

The above chart lists the average wages earned by jobs in the top five towns that Morristown workers commuted to in 2009. Note that these are averages of ALL wages paid in these towns, and not specifically the wages earned by Morristown residents. Earning higher wages in other communities may explain why Morristown’s household income is tracking higher than the county and state.



## Poverty



Source: US Census Bureau, Census of Population and Housing, and American Community Survey

Between 1979 and 1999, Morrystown's poverty rate fell. However the new 2005-2009 combined estimates seem to show a return to poverty within the range of the 1979 rate and likely even higher. Vermont and the county have also been trending in the same direction.

The table below shows that Morrystown tends to have a lower child poverty rate than the county and state. However, Morrisville, as a subset of the town, shows higher tendencies toward child poverty.

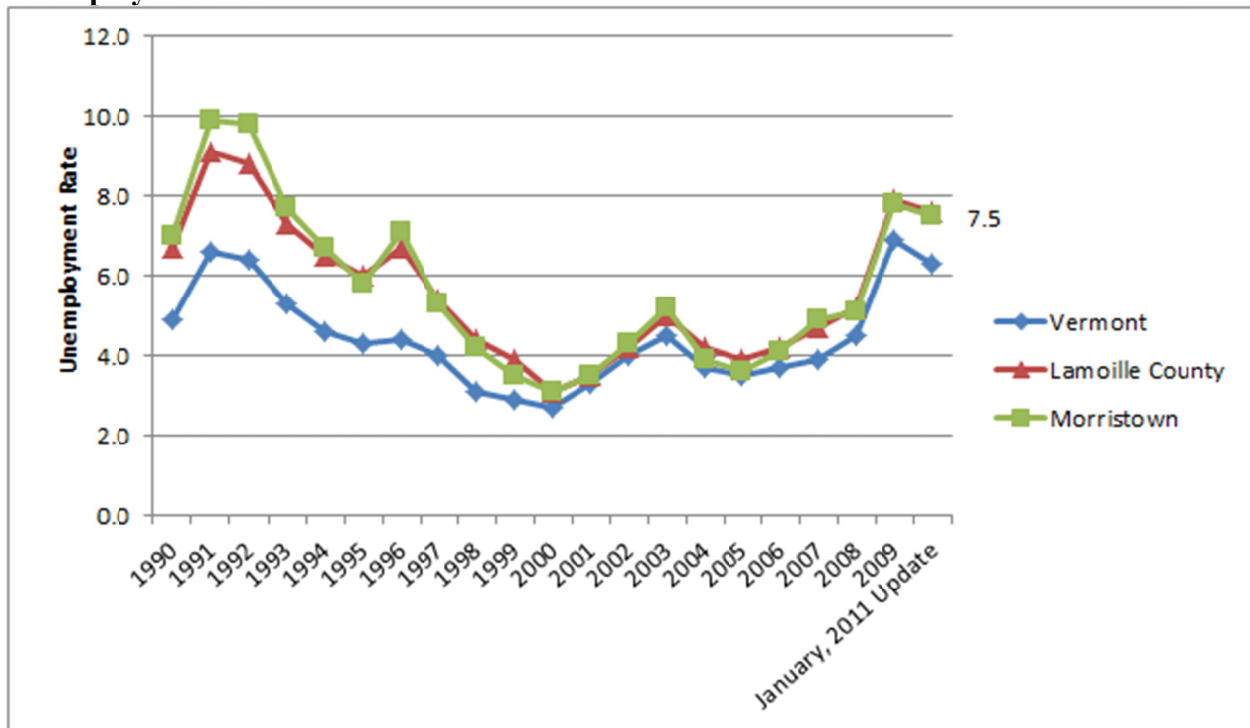
### Child (under 18) Poverty Rate, 2005-2009 Combined Estimate

	Estimate	MOE
Vermont	13.5	±0.8
Lamoille County	17.6	±4.9
Morrystown	11.4	±7.0
...Morrisville	22.8	±14.5

Source: US Census Bureau, 2005-2009 American Community Survey

# Employment and Labor Force

## Unemployment Rate



Source: Vermont Dept. of Labor

Morristown's unemployment rate has normally matched the county's very closely and has followed the overall state trend as well. Recently Morristown's annual rate peaked at 7.8% in 2009. However the January, 2011 update reveals a possible positive trend downward. We shall have to see if Morristown's 2010 and 2011 annual rates ratify this downward trend.

On the next page, the industry sector tables show that the plurality of jobs in Morristown (20.9%) are in Health Care and Social Assistance. That is a drop from 33.7% in 2002. The next highest local job sectors are Retail Trade (16.1%) and Educational Services (9.7%). Manufacturing was the 3<sup>rd</sup> largest sector in 2002, but has dropped from 12.8% to 9.4%.

The top four sectors in which Morristown residents work (whether in town or elsewhere) are:

1. Health Care and Social Assistance: 17.2%
2. Educational Services: 14.0%
3. Accommodation and Food Services: 10.9%
4. Retail Trade: 10.7%

Retail, accommodation and food services, and manufacturing all experienced noticeable drops between 2002 and 2009, with the Recession likely being a likely factor.

## Jobs in Morristown by Industry Sector, 2009 vs 2002

Jobs by NAICS Industry Sector	2009		2002	
	Count	Share	Count	Share
Agriculture, Forestry, Fishing and Hunting	32	1.0%	2	0.1%
Mining, Quarrying, and Oil and Gas Extraction	7	0.2%	0	0.0%
Utilities	20	0.6%	23	0.7%
Construction	108	3.3%	164	4.9%
Manufacturing	311	9.4%	430	12.8%
Wholesale Trade	124	3.8%	30	0.9%
Retail Trade	533	16.1%	619	18.5%
Transportation and Warehousing	89	2.7%	43	1.3%
Information	70	2.1%	33	1.0%
Finance and Insurance	133	4.0%	137	4.1%
Real Estate and Rental and Leasing	45	1.4%	5	0.1%
Professional, Scientific, and Technical Services	187	5.7%	58	1.7%
Management of Companies and Enterprises	6	0.2%	0	0.0%
Administration & Support, Waste Management and Remediation	107	3.2%	49	1.5%
Educational Services	322	9.7%	232	6.9%
Health Care and Social Assistance	691	20.9%	1,129	33.7%
Arts, Entertainment, and Recreation	41	1.2%	18	0.5%
Accommodation and Food Services	269	8.1%	208	6.2%
Other Services (excluding Public Administration)	118	3.6%	118	3.5%
Public Administration	93	2.8%	49	1.5%

Source: Local Employment Dynamics partnership of the US Census Bureau and Vermont Dept. of Labor

## Industry Sectors in Which Morristown Residents Work, 2009 vs 2002

Jobs by NAICS Industry Sector	2009		2002	
	Count	Share	Count	Share
Agriculture, Forestry, Fishing and Hunting	14	0.6%	6	0.3%
Mining, Quarrying, and Oil and Gas Extraction	7	0.3%	0	0.0%
Utilities	15	0.6%	15	0.7%
Construction	86	3.7%	137	6.1%
Manufacturing	225	9.7%	252	11.2%
Wholesale Trade	72	3.1%	51	2.3%
Retail Trade	248	10.7%	322	14.3%
Transportation and Warehousing	51	2.2%	30	1.3%
Information	48	2.1%	35	1.6%
Finance and Insurance	96	4.1%	68	3.0%
Real Estate and Rental and Leasing	27	1.2%	10	0.4%
Professional, Scientific, and Technical Services	111	4.8%	66	2.9%
Management of Companies and Enterprises	4	0.2%	0	0.0%
Administration & Support, Waste Management & Remediation	104	4.5%	72	3.2%
Educational Services	325	14.0%	215	9.6%
Health Care and Social Assistance	398	17.2%	396	17.6%
Arts, Entertainment, and Recreation	32	1.4%	14	0.6%
Accommodation and Food Services	252	10.9%	396	17.6%
Other Services (excluding Public Administration)	86	3.7%	75	3.3%
Public Administration	114	4.9%	89	4.0%

Source: Local Employment Dynamics partnership of the US Census Bureau and Vermont Dept. of Labor

### The Daily Commute – Where Morristown Residents Work, 2009

	Count	Share
Morristown	804	34.7%
Stowe	580	25.1%
Hyde Park	89	3.8%
Waterbury	82	3.5%
Burlington	79	3.4%
Montpelier	77	3.3%
Johnson	58	2.5%
South Burlington	44	1.9%
Essex	38	1.6%
Williston	37	1.6%
All Other Locations	427	18.4%
<b>Total</b>	<b>2,315</b>	<b>100.0%</b>

Source: Local Employment Dynamics partnership of the US Census Bureau and Vermont Dept. of Labor

Note: Covers Primary Jobs, not all jobs.

### The Morristown Labor Shed – Where Workers Commute from to Work in Morristown, 2009

	Count	Share
Morristown	804	24.3%
Hyde Park	348	10.5%
Wolcott	192	5.8%
Johnson	187	5.7%
Hardwick	113	3.4%
Stowe	93	2.8%
Eden	90	2.7%
Elmore	90	2.7%
Cambridge	80	2.4%
Waterville	56	1.7%
All Other Locations	1,253	37.9%
<b>Total</b>	<b>3,306</b>	<b>100.0%</b>

Source: Local Employment Dynamics partnership of the US Census Bureau and Vermont Dept. of Labor

Note: Covers Primary Jobs, not all jobs.

The two tables above show that Morristown and Lamoille County are highly linked in terms of labor force. For the daily commute, the plurality of Morristown residents who work do so in town. Furthermore the majority work in Lamoille County, especially Stowe.

Other than Morristown, itself, more than a third of those who work in town are from Lamoille County, with 10% from Hyde Park, alone.

The two tables below show the degree to which Morrystown employs its own resident workers. While the town imports workers from elsewhere, only 34.7% of working residents actually work in Morrystown. More than 75% of those who work in Morrystown are from another town.

### Morrystown Labor Force Efficiency, 2009

	Count	Share
Living in Morrystown	2,315	100.0%
Living and Employed in Morrystown	804	34.7%
Living in Morrystown but Employed Outside	1,511	65.3%

Source: Local Employment Dynamics partnership of the US Census Bureau and Vermont Dept. of Labor

Note: Covers Primary Jobs, not all jobs.

### Morrystown Regional Employment, 2009

	Count	Share
Employed in Morrystown	3,306	100.0%
Employed and Living in Morrystown	804	24.3%
Employed in Morrystown but Living Outside	2,502	75.7%

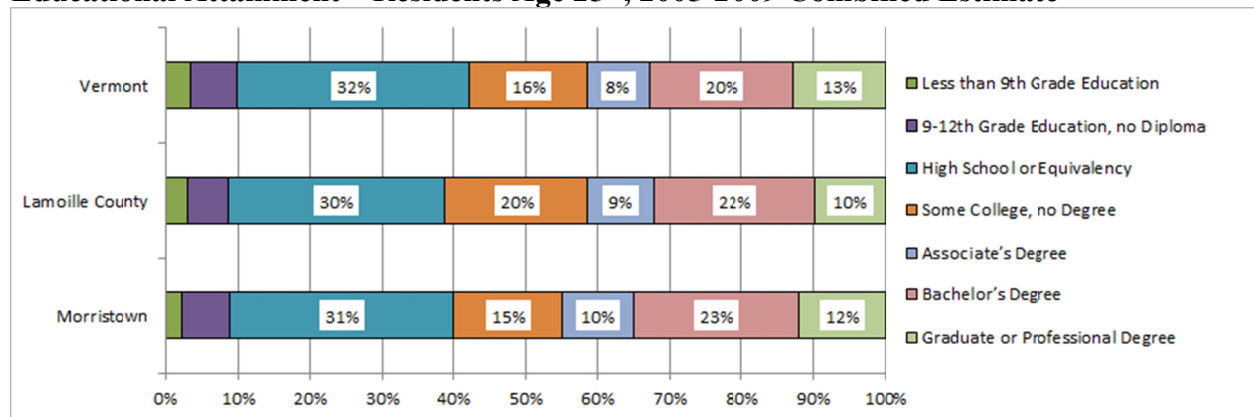
Source: Local Employment Dynamics partnership of the US Census Bureau and Vermont Dept. of Labor

Note: Covers Primary Jobs, not all jobs.

## Education

Below we can see that Morrystown tends to have a higher proportion of residents with a bachelor degree or higher than the county and state. However keep in mind that numbers may be within margins of error. Overall, Morrystown is very well matched with the county and state for educational attainment.

### Educational Attainment – Residents Age 25+, 2005-2009 Combined Estimate



Source: US Census Bureau, 2005-2009 American Community Survey

Note: Margins of Error not shown.

## Agriculture

### Farm Inventory by County

	Number of farms			Acres of land in farms		
	2002	2007	% Change	2002	2007	% Change
Addison	676	773	14.3%	193,376	187,482	-3.0%
Bennington	228	226	-0.9%	41,126	36,580	-11.1%
Caledonia	505	531	5.1%	84,318	81,946	-2.8%
Chittenden	473	591	24.9%	76,679	83,382	8.7%
Essex	98	94	-4.1%	19,838	26,732	34.8%
Franklin	770	740	-3.9%	190,115	180,006	-5.3%
Grand Isle	99	114	15.2%	16,289	17,138	5.2%
<b>Lamoille</b>	<b>317</b>	<b>300</b>	<b>-5.4%</b>	<b>53,820</b>	<b>49,749</b>	<b>-7.6%</b>
Orange	680	683	0.4%	110,415	101,645	-7.9%
Orleans	583	635	8.9%	132,240	130,308	-1.5%
Rutland	623	658	5.6%	121,203	130,580	7.7%
Washington	425	444	4.5%	53,942	61,029	13.1%
Windham	397	428	7.8%	61,596	50,764	-17.6%
Windsor	697	767	10.0%	89,952	95,972	6.7%
<b>Vermont</b>	<b>6,571</b>	<b>6,984</b>	<b>6.3%</b>	<b>1,244,909</b>	<b>1,233,313</b>	<b>-0.9%</b>

Source: 2007 USDA Census of Agriculture

### Market Value of Agricultural Products Sold by County

	Thousands of dollars			Average per farm (Dollars)		
	2002	2007	% Change	2002	2007	% Change
Addison	105,923	161,417	52.4%	156,691	208,819	33.3%
Bennington	7,818	10,518	34.5%	34,292	46,542	35.7%
Caledonia	23,789	31,542	32.6%	47,107	59,401	26.1%
Chittenden	28,109	33,662	19.8%	59,427	56,958	-4.2%
Essex	6,790	12,147	78.9%	69,283	129,222	86.5%
Franklin	115,435	160,619	39.1%	217,052	217,052	0.0%
Grand Isle	9,236	13,391	45.0%	149,915	117,463	-21.6%
<b>Lamoille</b>	<b>13,732</b>	<b>21,594</b>	<b>57.3%</b>	<b>43,319</b>	<b>71,980</b>	<b>66.2%</b>
Orange	32,008	43,292	35.3%	47,070	63,385	34.7%
Orleans	57,340	82,348	43.6%	98,354	129,682	31.9%
Rutland	23,987	35,286	47.1%	38,503	53,626	39.3%
Washington	14,739	21,511	45.9%	34,680	48,448	39.7%
Windham	18,321	21,408	16.8%	46,150	50,018	8.4%
Windsor	15,838	24,978	57.7%	22,723	32,566	43.3%
<b>Vermont</b>	<b>473,065</b>	<b>673,713</b>	<b>42.4%</b>	<b>71,993</b>	<b>96,465</b>	<b>34.0%</b>

Source: 2007 USDA Census of Agriculture