

Fairfield, Vermont

Community Data Profile

Fairfield Community Visit
October 6, 2010

What follows is a collection of indicators and information on the town of Fairfield and its residents. **These data are meant to help inform the October 2010 Fairfield Community Visit by the Vermont Council on Rural Development**, but they certainly have many other uses.

Most of these indicators have been produced by the US Census Bureau. Sources also include the Vermont Departments of Taxes and Labor, among others.

Readers may note that much of the data for Fairfield was most recently collected for 1999 or 2000 as part of the 2000 Census. Alas, **the 2000 Census is still the most recent source of many indicators at the community level for most Vermont towns**. However the first release of community-level data from the US Census Bureau's American Community Survey is expected in December of 2010. And the first release of town-level data from the 2010 Census is expected in May and June of 2011.

The UVM Center for Rural Studies engages in many projects to assist Vermonters in accessing and using community-level data for their towns, cities and villages. We encourage all Vermonters to familiarize themselves with some of the most common online sources of this data.

Vermonters will find community profiles with data from assorted sources at:

- **Vermont Indicators Online** – <http://crs.uvm.edu/indicators> and
- **Vermont Housing Data** – www.housingdata.org

Direct access to many of the agencies that produce the indicators can also be found at:

- the US Census Bureau's American FactFinder – <http://factfinder.census.gov>
- the Vermont Dept. of Labor's Covered Employment & Wages report – www.vtlmi.info/indnaics.htm
- the Vermont Dept. of Labor's Labor Force & Unemployment site – www.vtlmi.info/labforce.cfm
- the Vermont Dept. of Taxes' statistics site – www.state.vt.us/tax/statistics.shtml
- the Local Employment Dynamics site – <http://lehd.did.census.gov/led/datatools/onthemap4.html>
- the Vermont Crime Information Center – www.dps.state.vt.us/cjs/crimestats.htm and
- the USDA's Census of Agriculture – www.agcensus.usda.gov

Enjoy!



uvm.edu/crs
802-656-3021

The Center for Rural Studies at the University of Vermont is a nonprofit, fee-for-service research and resource center that works with people and communities to address social, economic, and resource-based challenges. A part of the University's College of Agriculture and Life Sciences since 1978, CRS supports the research and teaching missions of the university through its work in applied research, community outreach, program evaluation, and consulting services. CRS is also the US Census Bureau's State Data Center for Vermont.

Table of Contents

Civics	1
Population Demographics.....	1
Housing	4
Income & Poverty	6
Employment.....	9
Education	11
Transportation & Commuting.....	12
Taxation	15
Natural Resources.....	15
Agriculture	16

Civics

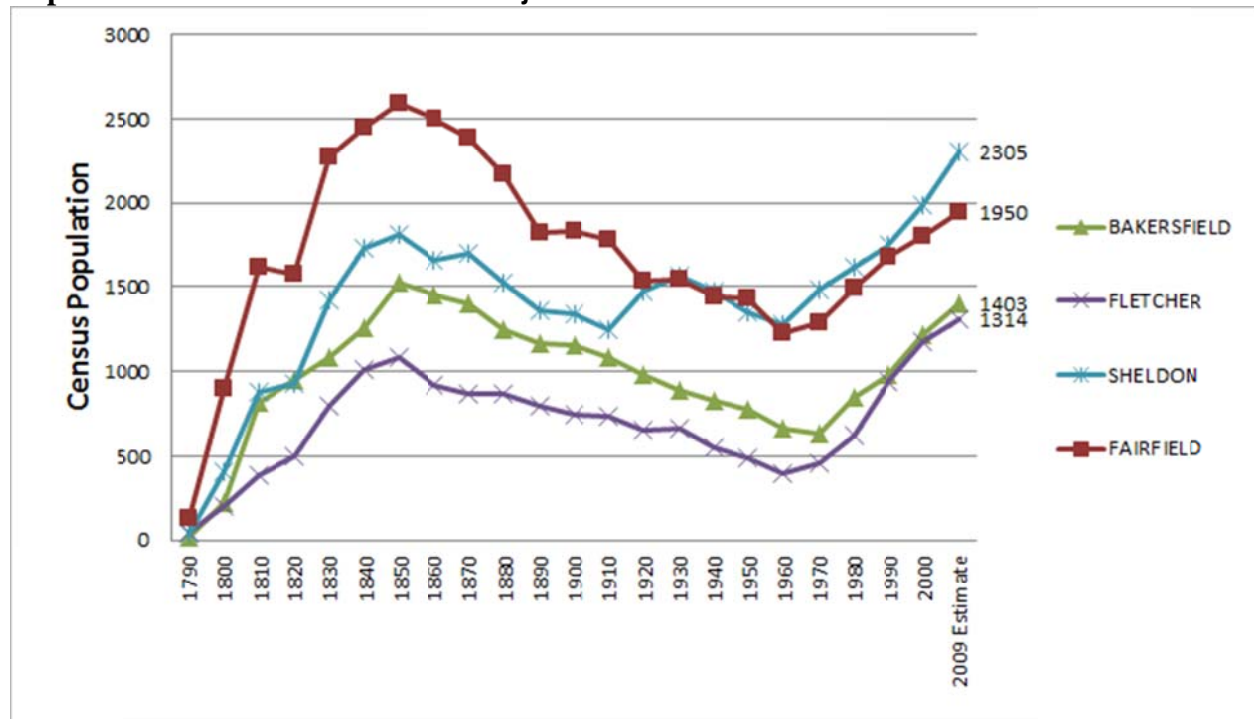
Fairfield Civic Stats	
Year Town Incorporated or Chartered	1763
Type of Entity	Municipality - Town
County	Franklin County
Regional Planning Commission	Northwest Regional Planning Commission
Incorporated Villages	None
Municipal Plan	Yes
...approved by Regional Planning Commission	Yes
Zoning Ordinance	Yes
Subdivision Ordinance	Yes
Development Review Board	No
Development Category	3 - Outlying Town

Source: Various, including 2010 town planning survey by the VT Dept. of Housing and Community Affairs.

Population Demographics

Fairfield's population curve is typical of a rural town. This is characterized by rapid growth since the 1960 Census. However, note that current growth still has not surpassed the peak of the mid-1800's.

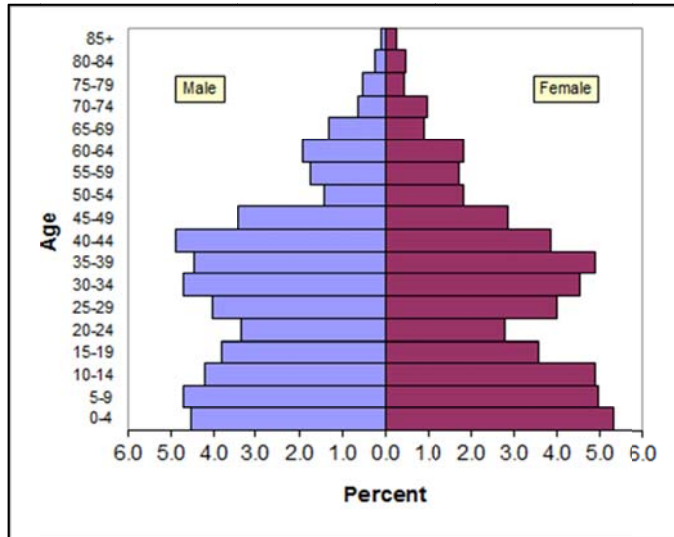
Population over Time - Fairfield and Adjacent Communities of Similar Size



Source: US Census Bureau, Census of Population and Housing and Population Estimates Program.

Population Pyramids

Fairfield 1990

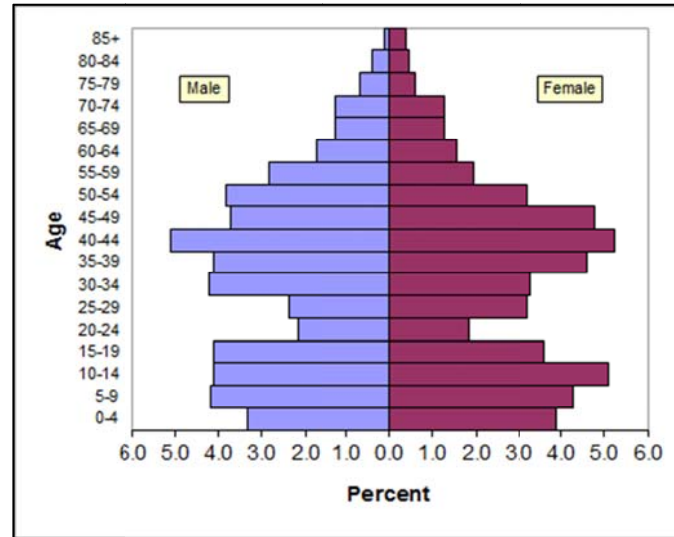


Source: US Census Bureau, Census of Population and Housing

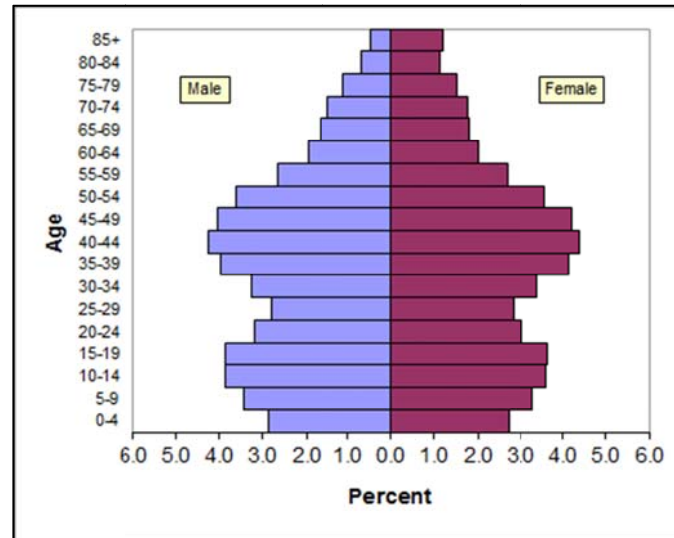
Fairfield's population pyramid is typical of a rural agricultural town. One can see the "Baby Boom Bulge," which is roughly the 35-54 age groups in both Fairfield and Vermont in 2000. The male portion of Fairfield's pyramid has peculiar crests in the 30-34 and 50-54 groups, likely due to the farm worker population in the town.

Also typical is the very low proportion of recent college graduate 20-29 age groups. This "valley" appears in the Vermont pyramid because it is dominated by the "Boom Echo" child group below it and also due to the nature of college graduates to leave Vermont, but it is highly pronounced in Fairfield's pyramid. It is very likely that this is a particular group of people that is leaving Fairfield and/or not returning after having attended college.

Fairfield 2000



Vermont 2000



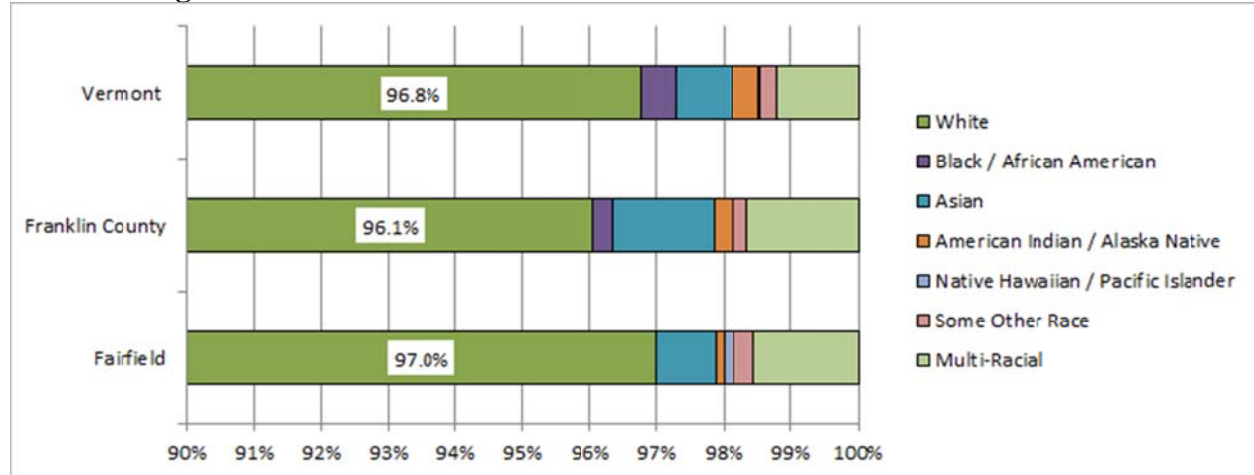
Median Age

	Census 2000	ACS 2006-2008 Estimate
Fairfield	35.2	<i>Expected Dec 2010</i>
Franklin County	35.7	38.5 ±0.5
Vermont	37.7	40.9 ±0.2

Source: US Census Bureau, 2000 Census and 2006-2008 American Community Survey

Despite the dearth of certain younger age groups in the population pyramids, Fairfield's median age table above shows that the town is slightly younger than the county and the state.

Racial Background



*Note that this table begins at 90%

Source: US Census Bureau, 2000 Census

Fairfield's racial make-up stood out from the county and state slightly in 2000. Most notable was the fact that Fairfield was 97% white, more than the county and state, and had no black or African American residents counted in 2000. Overall, however, differences were only measured in tenths of a percent. One weakness of this analysis, is that many instances of racial heritage, including black or African American, could be included in the multi-racial group.

Hispanic Origin

In addition, 1.3% of Fairfield residents (of any race) claimed Hispanic or Latino origin in 2000, which is twice the county rate of 0.6% and larger than the state rate of 0.9%. This could reflect the much publicized trend of migrant workers on Vermont farms.

Native Vermonters

In 2000 78.4% of Fairfield residents were native to Vermont, compared to 69.6% in the county and 54.3% in the state.

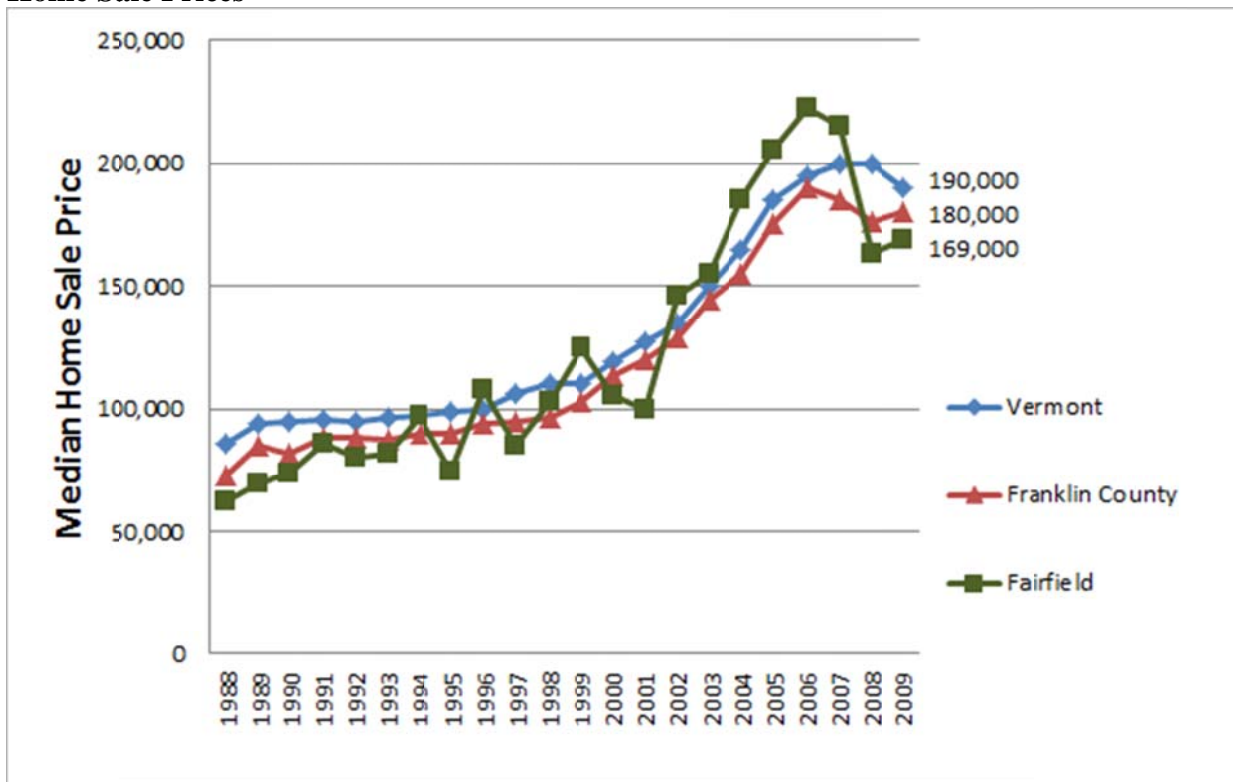
Housing

Fairfield had a slightly higher proportion of seasonal units than the county and state in 2000, and the town's housing prices had been tracking higher until 2008.

Fairfield Housing Statistics, 2000 Census	Fairfield	Franklin Co	Vermont
Total Housing Units	768	19,191	294,382
...Owner Occupied	514	12,582	169,784
<i>Owner occupied as percent of all housing</i>	66.9%	65.6%	57.7%
...Renter Occupied	106	4,183	70,850
<i>Renter occupied as a percent of all housing</i>	13.8%	21.8%	24.1%
...Vacant (not seasonal, recreational)	18	486	10,688
<i>Vacant (not seasonal/rec.) as a percent of all housing</i>	2.3%	2.5%	3.6%
...for Seasonal, Recreational, or Occasional Use	130	1,940	43,060
<i>Seasonal/recreational as a percent of all housing</i>	16.9%	10.1%	14.6%

Source: US Census Bureau, 2000 Census

Home Sale Prices



Source: Vermont Dept. of Taxes, calculated by Vermont Housing Finance Agency

Note: Numbers are NOT adjusted for inflation

Housing Costs, Census 2000

Median monthly homeownership costs	Fairfield	Franklin Co	Vermont
... with mortgage	\$847	\$948	\$1,021
... without mortgage	\$363	\$345	\$378
... as percentage of household income, 1999	19.7	20.3	20.2
Median gross rent	\$577	\$539	\$553
... as a percentage of household income, 1999	30.4	24.2	26.2
Percentage of all households with housing costs at or above 30% of household income	28.3	25.3	28.7

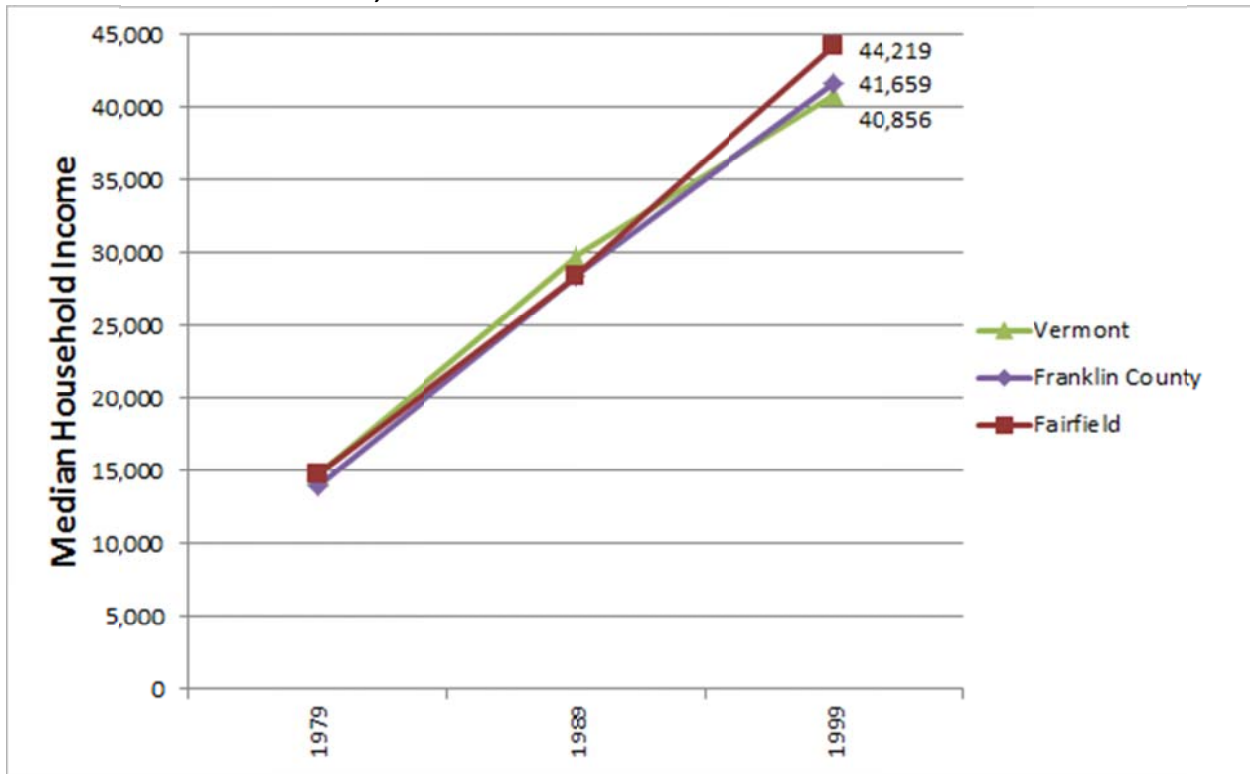
Source: US Census Bureau, 2000 Census

Fairfield's homeownership costs were lower than the county and state, overall, in 2000, but rental costs were higher.

Income & Poverty

Incomes earned by residents of Fairfield up until 1999 were similar, if not higher, than the county and state. More recent numbers from state income tax returns reflect this trend as well.

Median Household Income, 1979-1999



Source: US Census Bureau, Census of Population and Housing

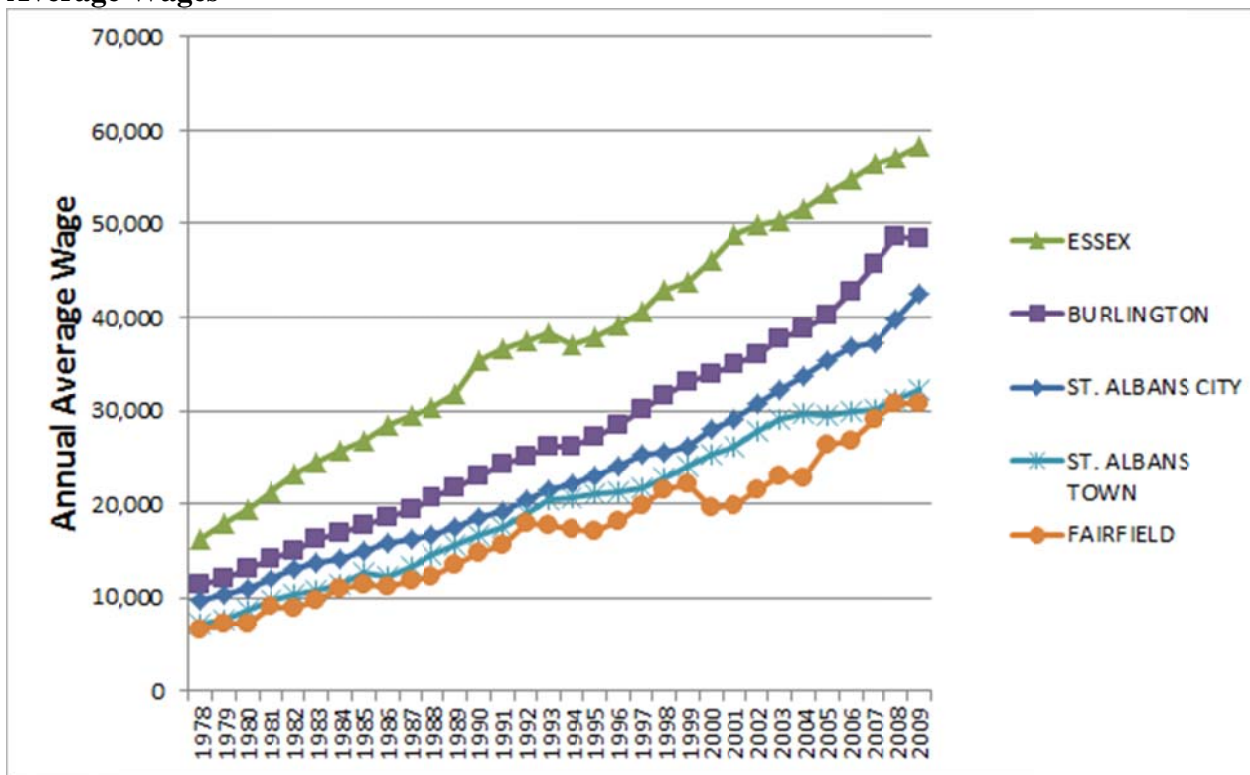
Notes: These are the gross income numbers of residents of the given locations. Numbers are NOT adjusted for inflation

Other Fairfield Income Statistics	Fairfield	Franklin Co	Vermont
Median Adjusted Gross Income per Family, 2008	\$60,291	\$55,766	\$58,069
Average Adjusted Gross Income per Person, 2008	\$22,371	\$21,943	\$23,048

Sources: Vermont Dept. of Taxes

Notes: Numbers are NOT adjusted for inflation

Average Wages

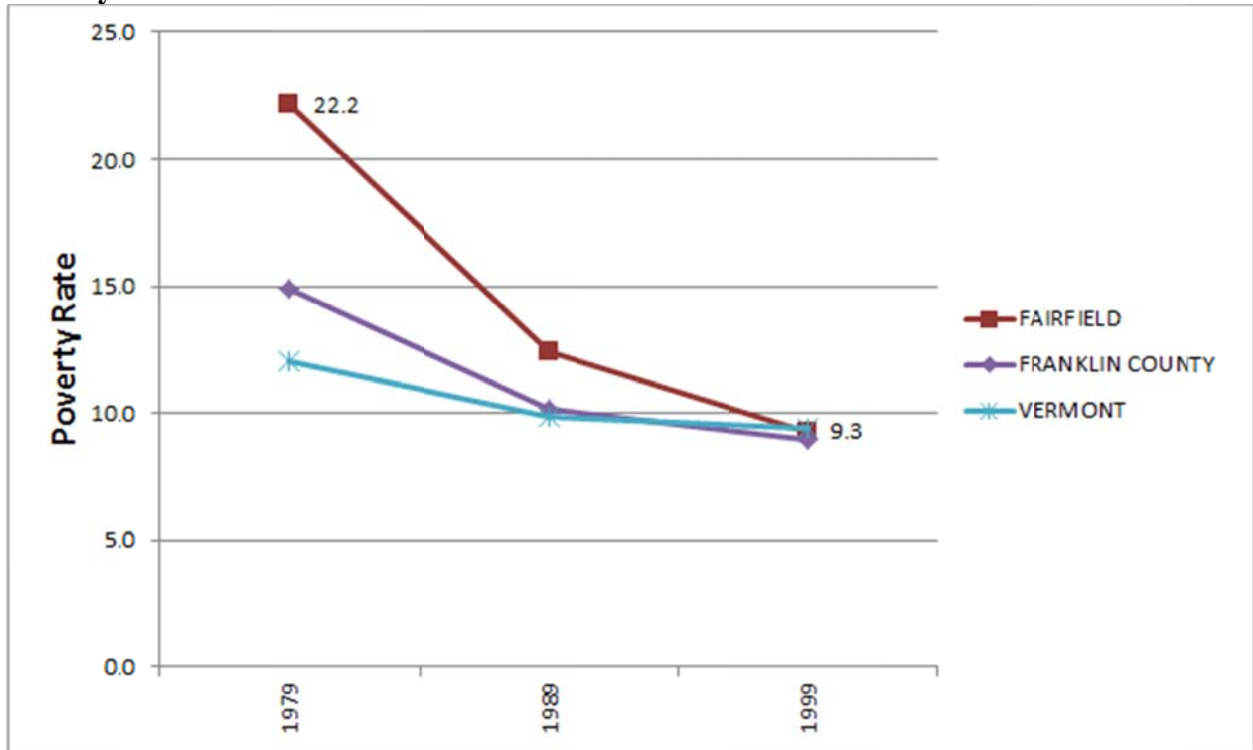


Source: Vermont Dept. of Labor

Notes: These are the average wages paid by employers in the given locations – e.g. not all Fairfield residents earn Fairfield wages. These numbers are LIMITED to employers that pay Unemployment Insurance. The numbers are NOT adjusted for inflation.

The below chart lists the average wages earned by jobs in the top five towns that Fairfield workers commuted to in 2008. Note that these are averages of ALL wages paid in these towns, and not specifically the wages earned by Fairfield residents. Earning higher wages in other communities may explain why Fairfield household income is tracking higher than the county and state.

Poverty

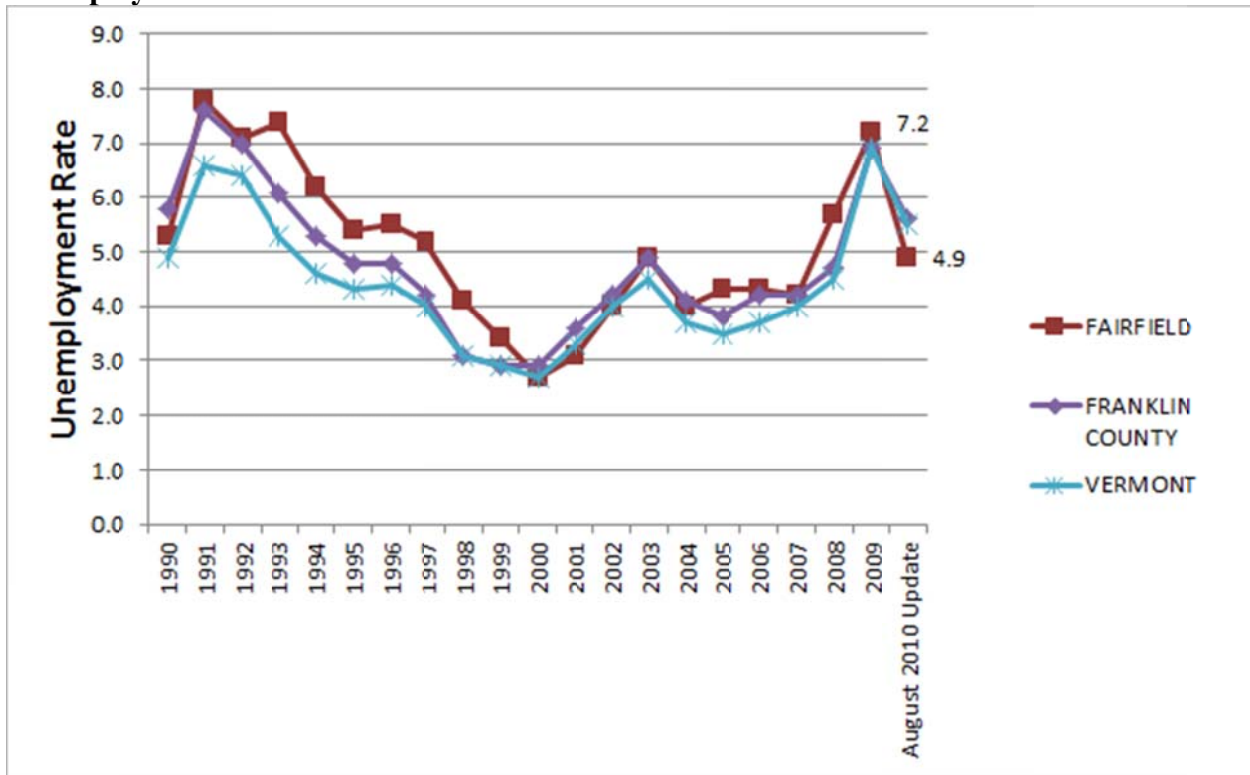


Source: US Census Bureau, Census of Population and Housing

Between 1979 and 1999, Fairfield's poverty rate fell sharply from more than a fifth of the population to a place within tenths of percentage points of the county and state in 1999. In light of the current recession, one can only hope that Fairfield's poverty rate is still fairing as well.

Employment

Unemployment Rate



Source: Vermont Dept. of Labor

Fairfield's unemployment rate has normally been slightly higher than the county and state. As seasonal jobs and other work sectors have picked up slightly, unemployment rates have gone down in August 2010. In fact, Fairfield's was lower than the county and state. However it should be noted that some decreases in unemployment may be due to unemployed people ceasing their search for new work and leaving the labor force altogether, thus removing them from the calculation.

On the next page, the industry sector table shows that most Fairfield residents who work do so in the manufacturing sector. This group is dominated by those who commute outside of town, as the next table shows that there were actually only 5 manufacturing jobs in the town, itself, in 2008.

The next highest group of Fairfield residents works in the educational sector, likely in town and at schools in surrounding towns. Overall, only 3.4 of Fairfield workers do so in the agricultural (and forestry) sector.

Industry Sectors in Which Fairfield Residents Work, 2008 vs 2002

Jobs by Industry Type (2-digit NAICS)				
	2008		2002	
	Count	Share	Count	Share
Agriculture, Forestry, Fishing and Hunting	24	3.4%	21	3.1%
Mining, Quarrying, and Oil and Gas Extraction	1	0.1%	0	0.0%
Utilities	3	0.4%	2	0.3%
Construction	40	5.7%	35	5.1%
Manufacturing	135	19.2%	136	20.0%
Wholesale Trade	37	5.3%	22	3.2%
Retail Trade	74	10.5%	72	10.6%
Transportation and Warehousing	15	2.1%	17	2.5%
Information	23	3.3%	24	3.5%
Finance and Insurance	16	2.3%	27	4.0%
Real Estate and Rental and Leasing	3	0.4%	5	0.7%
Professional, Scientific, and Technical Services	30	4.3%	19	2.8%
Management of Companies and Enterprises	0	0.0%	0	0.0%
Administration & Support, Waste Management and Remediation	24	3.4%	14	2.1%
Educational Services	106	15.1%	86	12.6%
Health Care and Social Assistance	92	13.1%	103	15.1%
Arts, Entertainment, and Recreation	1	0.1%	6	0.9%
Accommodation and Food Services	43	6.1%	46	6.8%
Other Services (excluding Public Administration)	14	2.0%	23	3.4%
Public Administration	23	3.3%	23	3.4%

Source: Local Employment Dynamics partnership of the US Census Bureau and Vermont Dept. of Labor

Industry Sectors of Jobs Located in Fairfield, 2008 vs 2002

Jobs by Industry Type (2-digit NAICS)				
	2008		2002	
	Count	Share	Count	Share
Agriculture, Forestry, Fishing and Hunting	28	19.3%	21	15.9%
Mining, Quarrying, and Oil and Gas Extraction	0	0.0%	0	0.0%
Utilities	0	0.0%	0	0.0%
Construction	7	4.8%	5	3.8%
Manufacturing	5	3.4%	4	3.0%
Wholesale Trade	2	1.4%	1	0.8%
Retail Trade	21	14.5%	38	28.8%
Transportation and Warehousing	11	7.6%	4	3.0%
Information	0	0.0%	0	0.0%
Finance and Insurance	1	0.7%	3	2.3%
Real Estate and Rental and Leasing	3	2.1%	0	0.0%
Professional, Scientific, and Technical Services	2	1.4%	4	3.0%
Management of Companies and Enterprises	0	0.0%	0	0.0%
Administration & Support, Waste Management and Remediation	1	0.7%	0	0.0%
Educational Services	50	34.5%	32	24.2%
Health Care and Social Assistance	0	0.0%	3	2.3%
Arts, Entertainment, and Recreation	0	0.0%	0	0.0%
Accommodation and Food Services	0	0.0%	0	0.0%
Other Services (excluding Public Administration)	3	2.1%	0	0.0%
Public Administration	11	7.6%	17	12.9%

Source: Local Employment Dynamics partnership of the US Census Bureau and Vermont Dept. of Labor

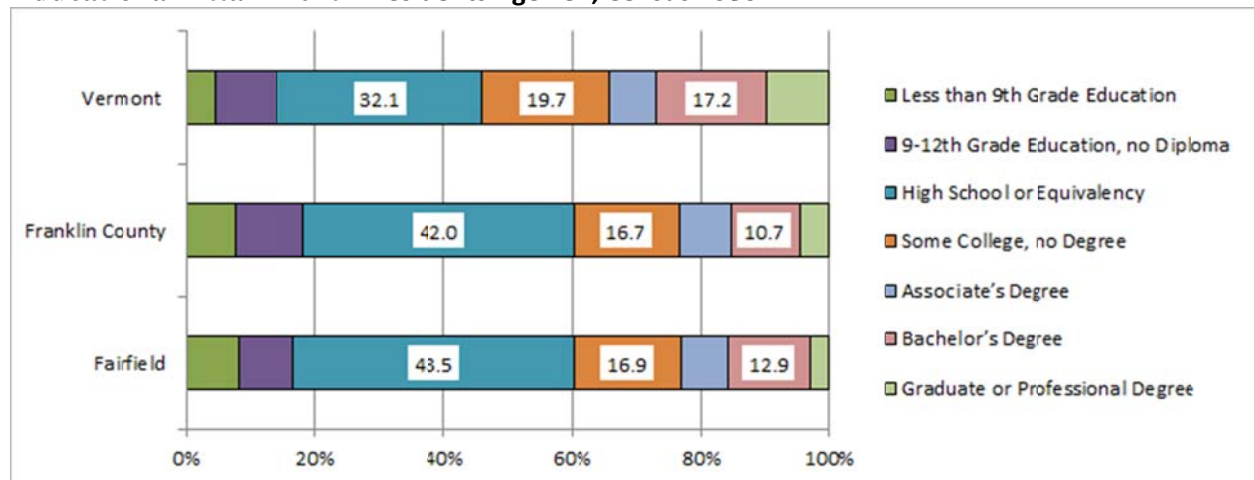
Education

Fairfield Center School (K-8) Participation Information	2004-2005	2005-2006	2006-2007	2007-2008	State of VT 2007-2008
Total School Enrollment	264	279	262	260	94,114
Attendance Rate	96.3%	96.1%	96.8%	N/AV	N/AV
Student/Teacher Ratio	11.82	12.36	11.70	11.61	11.13
Eligible Special Education	16.3%	14.7%	13.7%	16.2%	14.90%
Home Study (Number)	12	14	12	16	2,096

Source: VT Dept of Education School Report- 2008 (N/AV = Not Available)

The above table shows some general data for the Fairfield Center School. Below we can see that Fairfield had a higher proportion than the county and state of residents whose highest degree is from high school in 2000. Compared to the county overall, Fairfield has a lower proportion of residents without a high school diploma and a higher proportion of people with bachelor's degrees.

Educational Attainment – Residents Age 18+, Census 2000



Source: US Census Bureau, 2000 Census

Transportation & Commuting

Typical of rural communities, Fairfield residents were more likely to have more vehicles at home than the county and state and tended to have slightly longer commutes in 2000. Fairfield residents were more likely to drive to work alone but also more likely to work at home.

Household Vehicle Ownership, Census 2000

Percent of Households with...	Fairfield	Franklin County	Vermont
1 Vehicle	24.5	29.8	33.6
2 Vehicles	48.5	45.5	43.1
3 or more Vehicles	23.2	18.5	16.4
No Vehicles	3.7	6.3	6.8
<i>Average Number of Vehicles per Household</i>	2.01	1.84	1.75

Source: US Census Bureau, 2000 Census

Means of Travel to Work, Census 2000

Percent of Workers 16+ Who...	Fairfield	Franklin County	Vermont
Drove to Work Alone	75.2	73.3	75.2
Carpooled to Work	13.0	16.5	11.9
Commuted via Public Transportation	0.2	0.2	0.7
Walked to Work	3.2	4.0	5.6
Worked at Home	8.2	5.6	5.7

Source: US Census Bureau, 2000 Census

Average Travel Time to Work (In Minutes), 1980-2000

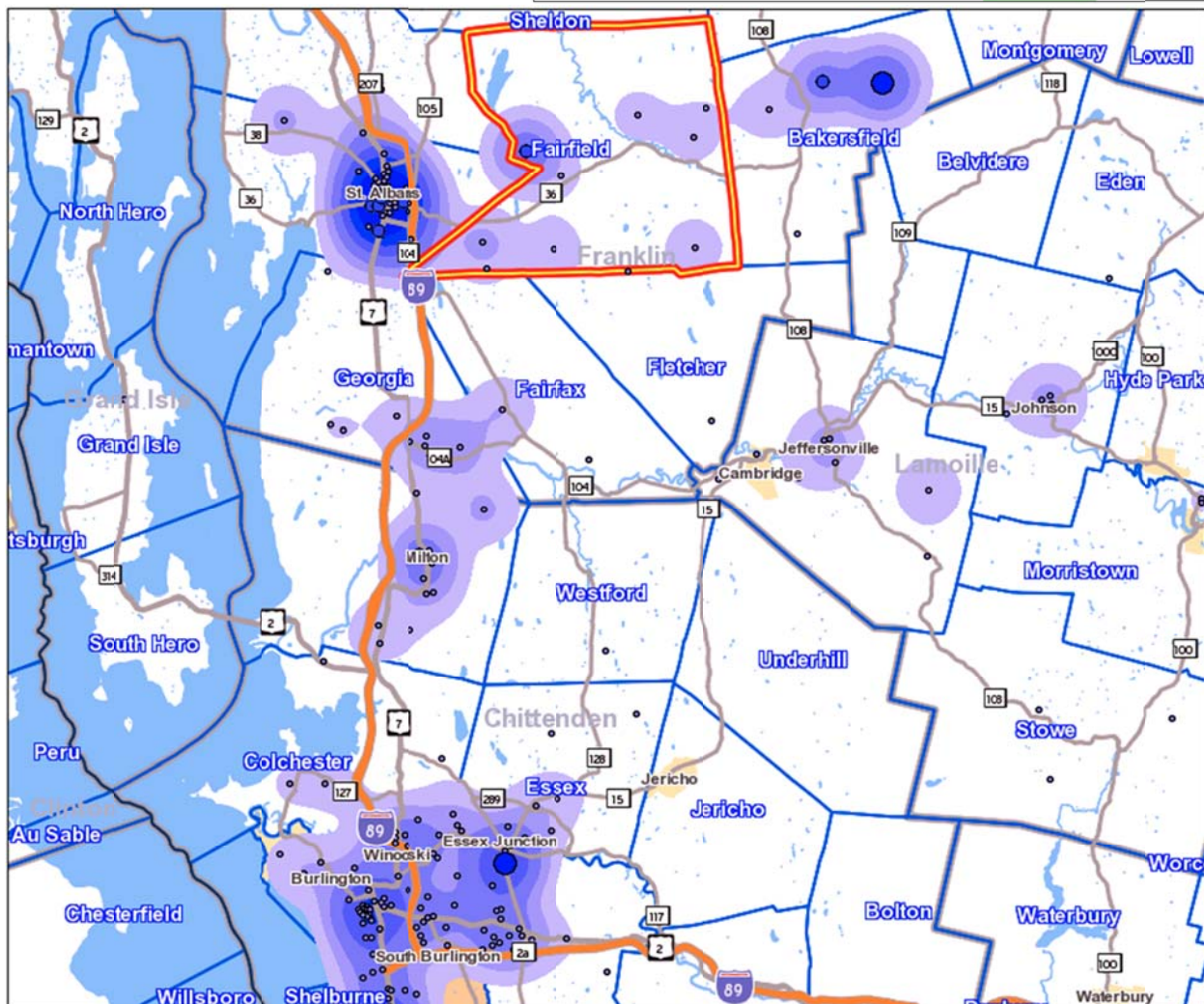
	1980	1990	2000	ACS 2006-2008 Estimate
Fairfield	19.6	27.0	32.0	<i>Expected Dec 2010</i>
Franklin Co	18.0	21.6	25.6	26.4 ±1.5
Vermont	16.5	18.0	21.6	21.4 ±0.3

Source: US Census Bureau, Census of Population and Housing and American Community Survey

The Daily Commute – Where Fairfield Residents Work, 2008

This table and map show representations of the average daily commute of Fairfield residents in 2008. The plurality of Fairfield residents worked in St. Albans City and Town, followed by Burlington, Essex and then Fairfield itself. It is typical of a rural community like Fairfield to employ such a low percentage of its own resident workers.

Total All Jobs		
	2008	
	Count	Share
Total All Jobs	704	100.0%
Jobs in County Subdivisions Where Workers are Employed		
	2008	
	Count	Share
St. Albans city (Franklin, VT)	111	15.8%
St. Albans town (Franklin, VT)	65	9.2%
Burlington city (Chittenden, VT)	65	9.2%
Essex town (Chittenden, VT)	50	7.1%
Fairfield town (Franklin, VT)	40	5.7%
Bakersfield town (Franklin, VT)	40	5.7%
Enosburg town (Franklin, VT)	34	4.8%
South Burlington city (Chittenden, VT)	33	4.7%
Milton town (Chittenden, VT)	31	4.4%
Colchester town (Chittenden, VT)	28	4.0%
All Other Locations	207	29.4%



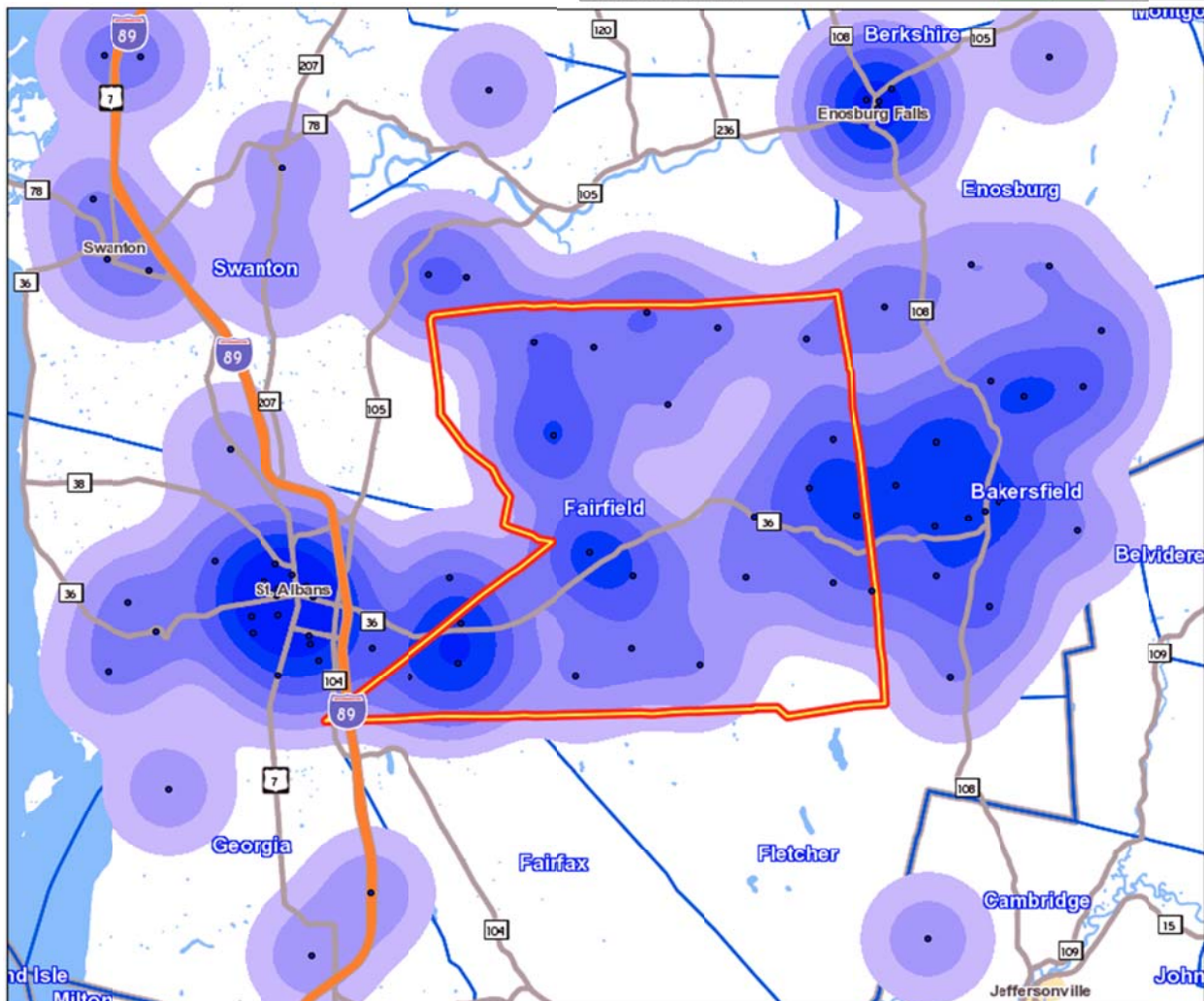
Source: Local Employment Dynamics partnership of the US Census Bureau and Vermont Dept. of Labor

The Fairfield Labor Shed – Where Workers Commute from to Work in Fairfield, 2008

This table and map show representations of where people came from to work in Fairfield in 2008. The plurality of daily workers came in from Fairfield itself, followed by Bakersfield. The total number of jobs in Fairfield in 2008, represented by this data as 145, when compared to the above table of Fairfield workers (704), shows that Fairfield exported far more workers than it imported on any given day. The population of the town was likely lower during the day, than after the workday was over.

Total All Jobs		
	2008 Count	2008 Share
Total All Jobs	145	100.0%

Jobs in County Subdivisions Where Workers Live		
	2008 Count	2008 Share
Fairfield town (Franklin, VT)	40	27.6%
Bakersfield town (Franklin, VT)	24	16.6%
Enosburg town (Franklin, VT)	13	9.0%
St. Albans town (Franklin, VT)	12	8.3%
St. Albans city (Franklin, VT)	12	8.3%
Highgate town (Franklin, VT)	6	4.1%
Berkshire town (Franklin, VT)	5	3.4%
Swanton town (Franklin, VT)	4	2.8%
Long Lake town (Hamilton, NY)	4	2.8%
Sheldon town (Franklin, VT)	3	2.1%
All Other Locations	22	15.2%



Source: Local Employment Dynamics partnership of the US Census Bureau and Vermont Dept. of Labor

Taxation

Fairfield Property Taxation	FY 2002	FY 2003	FY 2004	FY 2005	FY 2006	FY 2007	FY 2008	FY 2009	FY 2010
Municipal Tax Rate (plus LAR & Highway) (per \$100)	0.70	0.53	0.57	0.65	0.64	0.71	0.72	0.48	0.54
Education Tax Rate for Homesteads (per \$100)	N/AV	N/AV	N/AV	1.2665	1.3929	1.3795	1.4107	1.0796	1.1208
Education Tax Rate for Non-Residential (per \$100)	N/AV	N/AV	N/AV	1.4676	1.5724	1.6080	1.7655	1.3655	1.3770
Common Level of Appraisal Ratio	N/AV	N/AV	N/AV	1.0493	0.9603	0.8860	0.7703	0.7168	0.9804
N/AV = Not Available									

Source: Vermont Dept. of Taxes

Natural Resources

Fairfield Land Stats	Fairfield	Franklin Co	Vermont
Area of Land, Acres, 2000	43,386	407,680	5,920,640
Total Private & Public Conserved Lands, Acres, 1999	5,691	46,363	1,148,249
Percent Private & Public Conserved Lands, 1999	13%	11%	19%

Source: US Census Bureau and University of Vermont

Agriculture

Farm Inventory by County

	Number of farms			Acres of land in farms		
	2002	2007	% Change	2002	2007	% Change
Addison	676	773	14.3%	193,376	187,482	-3.0%
Bennington	228	226	-0.9%	41,126	36,580	-11.1%
Caledonia	505	531	5.1%	84,318	81,946	-2.8%
Chittenden	473	591	24.9%	76,679	83,382	8.7%
Essex	98	94	-4.1%	19,838	26,732	34.8%
Franklin	770	740	-3.9%	190,115	180,006	-5.3%
Grand Isle	99	114	15.2%	16,289	17,138	5.2%
Lamoille	317	300	-5.4%	53,820	49,749	-7.6%
Orange	680	683	0.4%	110,415	101,645	-7.9%
Orleans	583	635	8.9%	132,240	130,308	-1.5%
Rutland	623	658	5.6%	121,203	130,580	7.7%
Washington	425	444	4.5%	53,942	61,029	13.1%
Windham	397	428	7.8%	61,596	50,764	-17.6%
Windsor	697	767	10.0%	89,952	95,972	6.7%
Vermont	6,571	6,984	6.3%	1,244,909	1,233,313	-0.9%

Source: 2007 USDA Census of Agriculture

Market Value of Agricultural Products Sold by County

	Thousands of dollars			Average per farm (Dollars)		
	2002	2007	% Change	2002	2007	% Change
Addison	105,923	161,417	52.4%	156,691	208,819	33.3%
Bennington	7,818	10,518	34.5%	34,292	46,542	35.7%
Caledonia	23,789	31,542	32.6%	47,107	59,401	26.1%
Chittenden	28,109	33,662	19.8%	59,427	56,958	-4.2%
Essex	6,790	12,147	78.9%	69,283	129,222	86.5%
Franklin	115,435	160,619	39.1%	217,052	217,052	0.0%
Grand Isle	9,236	13,391	45.0%	149,915	117,463	-21.6%
Lamoille	13,732	21,594	57.3%	43,319	71,980	66.2%
Orange	32,008	43,292	35.3%	47,070	63,385	34.7%
Orleans	57,340	82,348	43.6%	98,354	129,682	31.9%
Rutland	23,987	35,286	47.1%	38,503	53,626	39.3%
Washington	14,739	21,511	45.9%	34,680	48,448	39.7%
Windham	18,321	21,408	16.8%	46,150	50,018	8.4%
Windsor	15,838	24,978	57.7%	22,723	32,566	43.3%
Vermont	473,065	673,713	42.4%	71,993	96,465	34.0%

Source: 2007 USDA Census of Agriculture