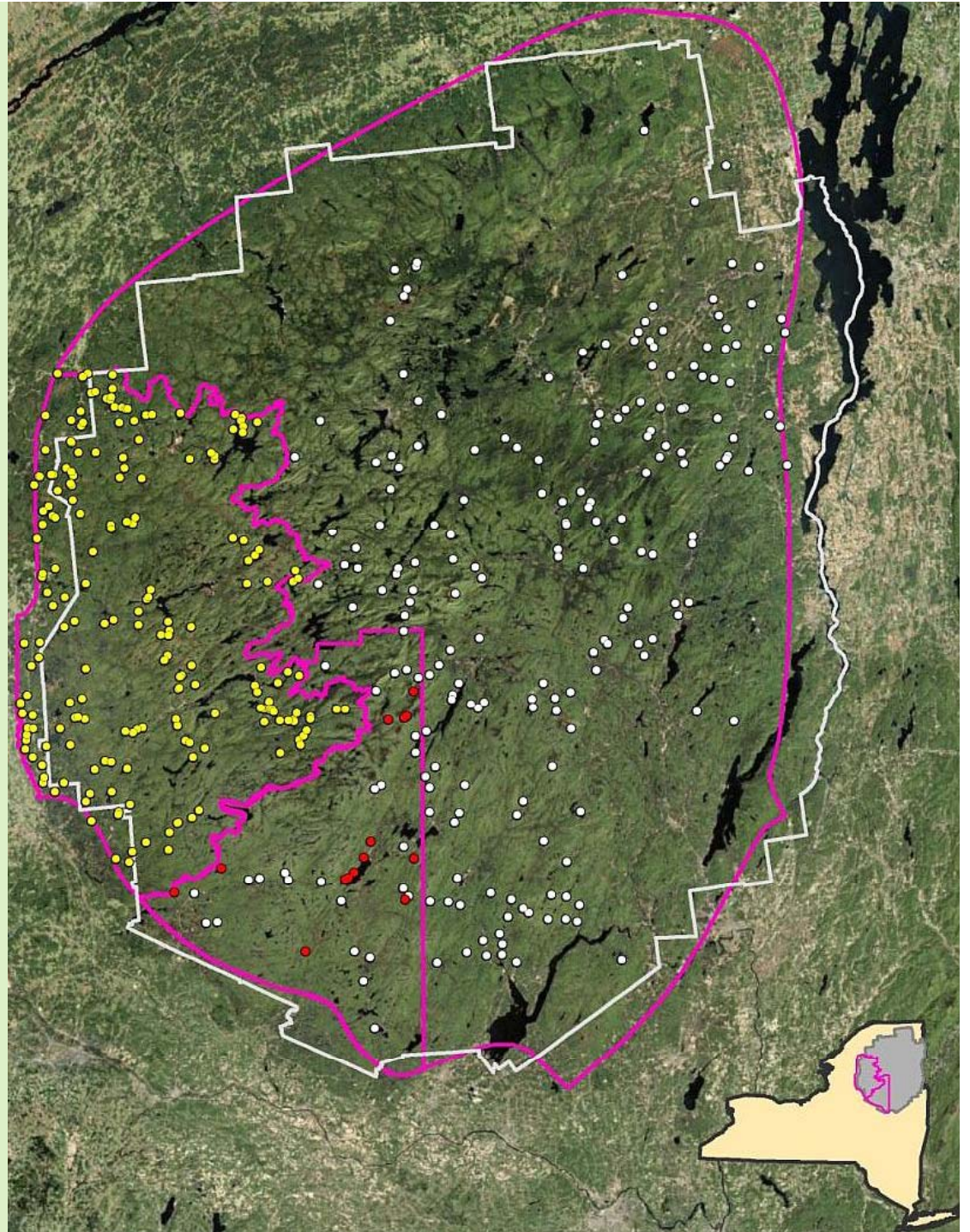
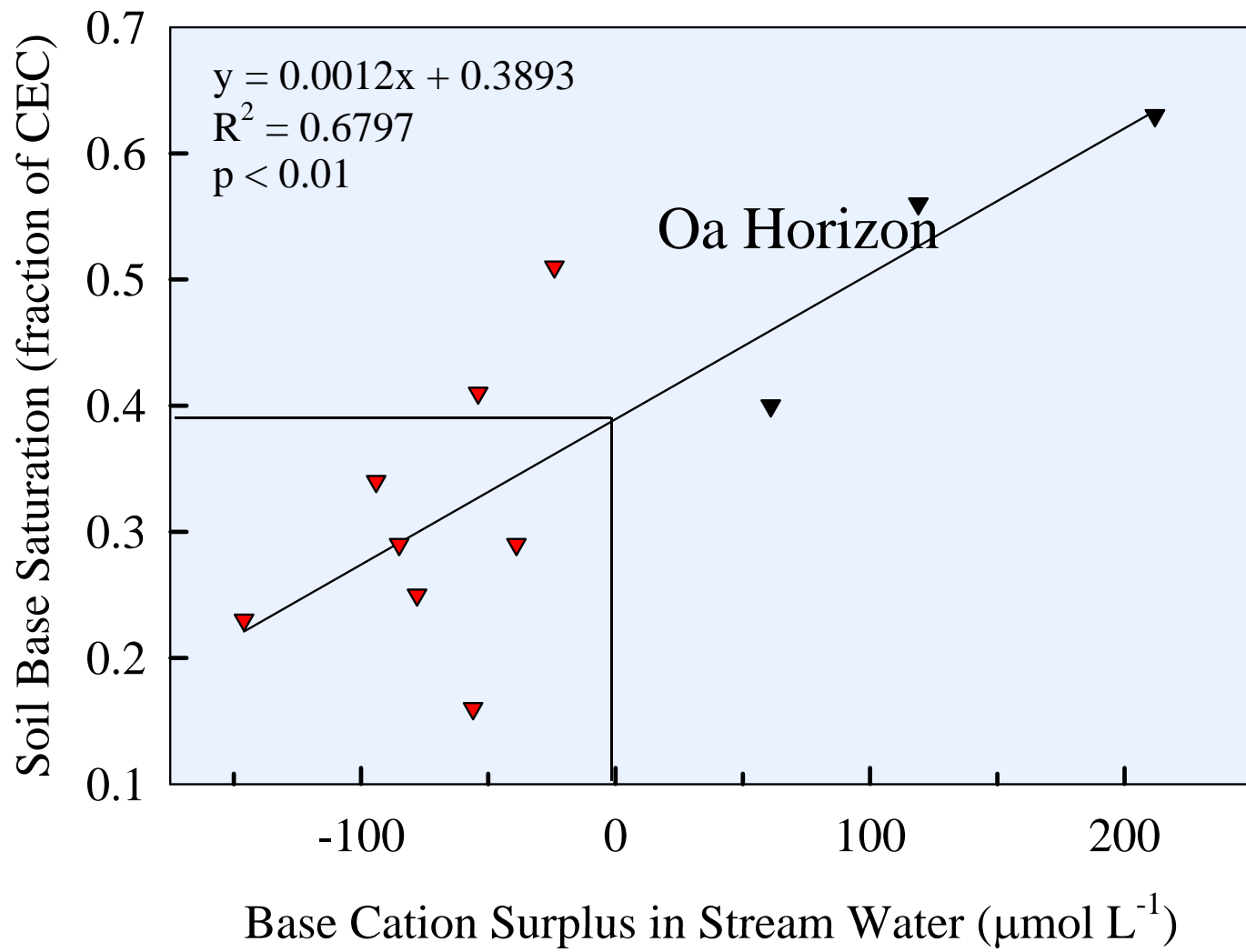
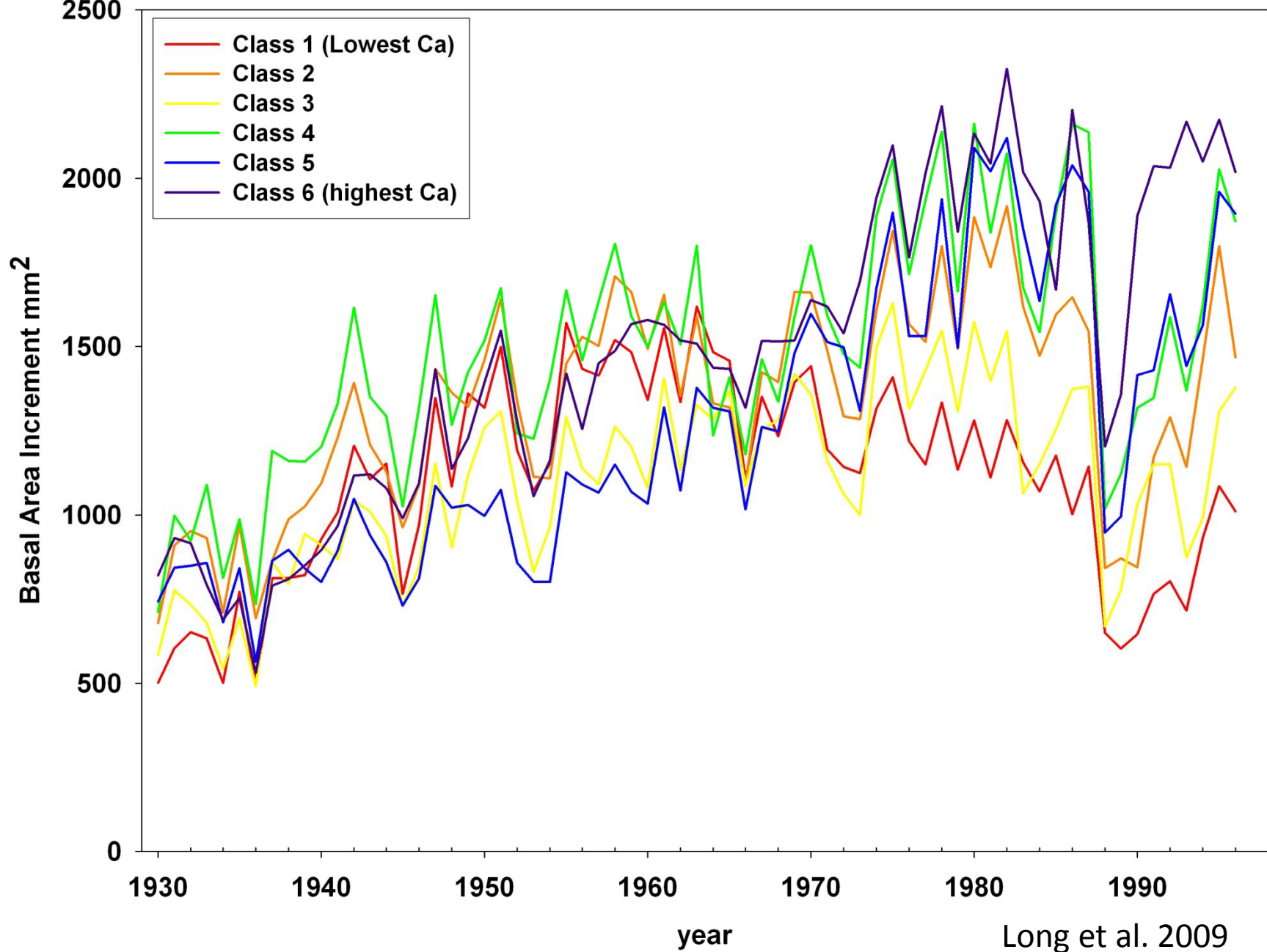


East-Central Adirondack Stream Survey





Annual Sugar Maple Basal Area Increment by Calcium Nutrition Classes



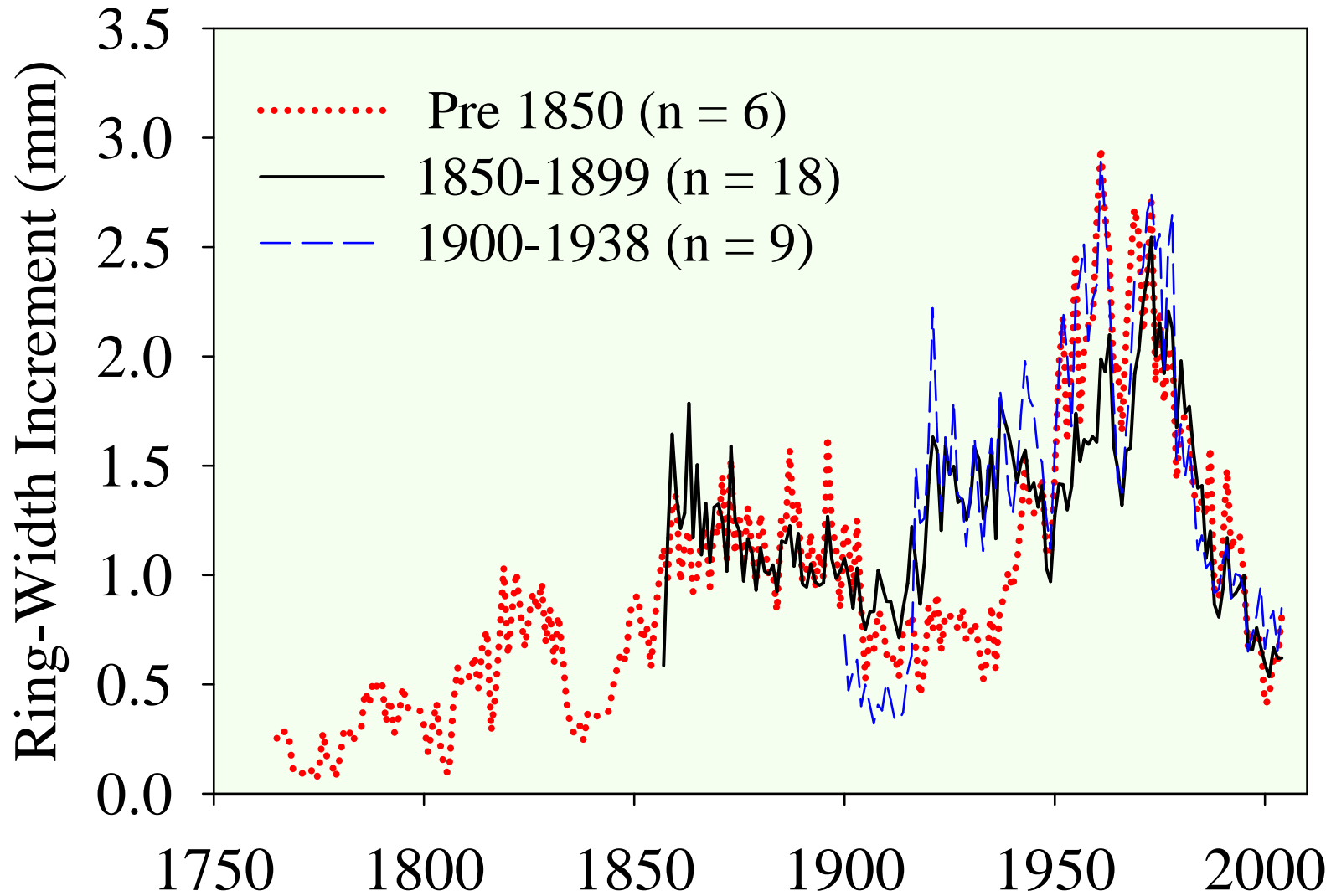
Long et al. 2009

Project Title: Acid Deposition Effects on Adirondack Ecosystems: Linkages Among Streams, Soils and Sugar Maple Health

Investigators: Gregory Lawrence, U.S. Geological Survey
Timothy Sullivan, E&S Environmental Chemistry
Scott Bailey, USDA Forest Service



Adirondack Sugar Maple Growth Trends



















Measurements for the Sugar Maple Project

1. Identification and DBH of all trees > 10 cm DBH within plots.
2. Canopy condition of all trees.
3. Dendrochronology of sugar maple trees.
4. Seedling and sapling counts in subplots.
5. Soil profile descriptions and sampling.

--Field Sampling was completed in 2009--